

COMMONWEALTH OF THE NORTHERN MARIANA ISLANDS

SOUNDINGS IN FATHOMS
(FATHOMS AND FEET TO ELEVEN FATHOMS)
REDUCED TO LOWEST NORMAL TIDES

Formerly H.Q. 8093, 1st Ed., Apr. 1944

For Symbols and Abbreviations see Chart No. 1

Additional information can be obtained at nauticalcharts.noaa.gov

CURRENT OBSERVATIONS

Harbor currents are light and variable
Maximum rate 0.2 knot

210°
CAUTION

Improved channels shown by broken lines
subject to shoaling, particularly at the edges.

NOTE A

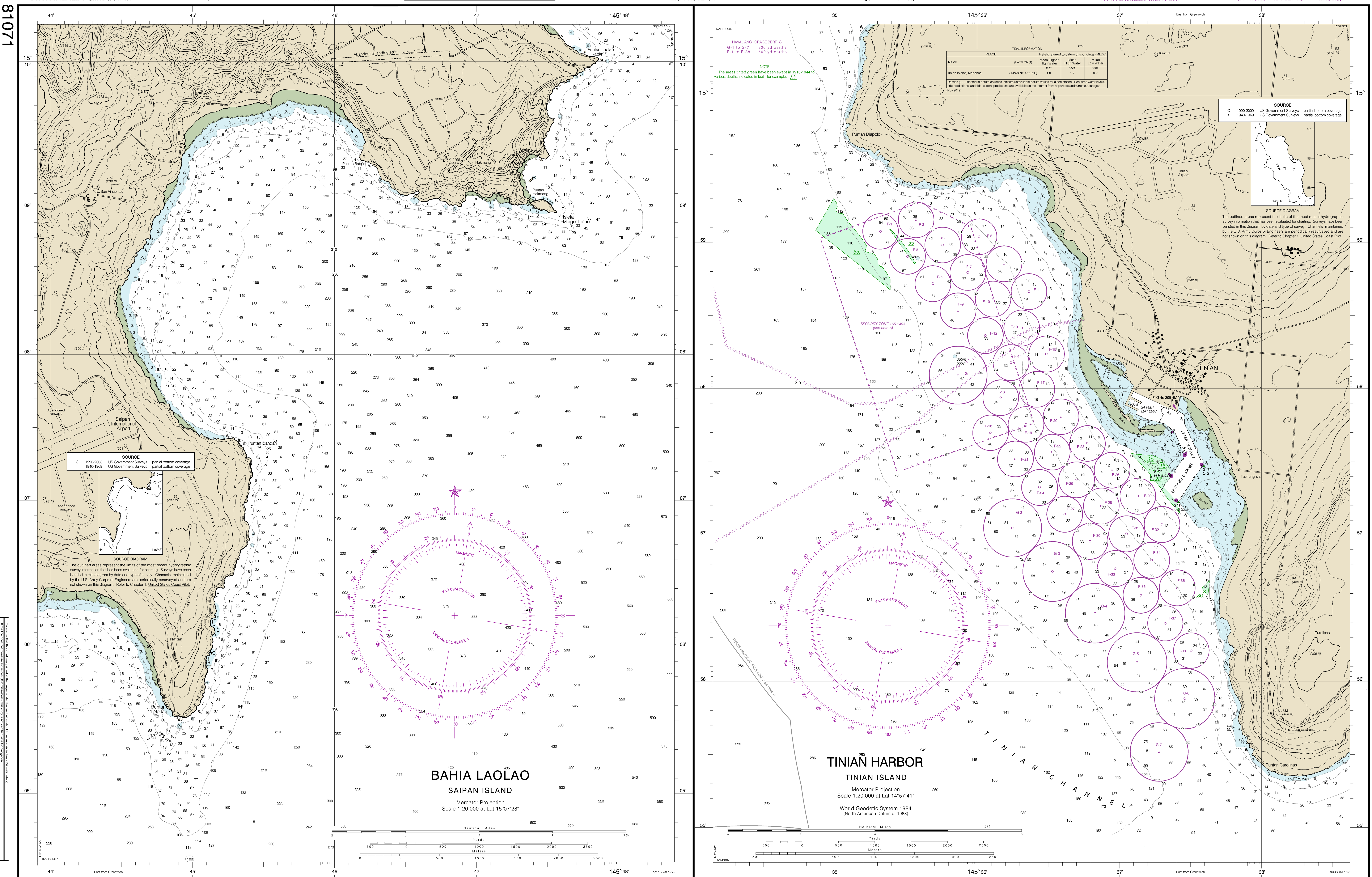
Navigation regulations are published in Chapter 2, U.S. Coast Pilot 7. Additions or revisions to Chapter 2 are published in the Notice to Mariners. Information concerning these regulations may be obtained at the Office of the Commander, 14th Coast Guard District in Honolulu, Hawaii or at the Office of the District Engineer, Corps of Engineers in Honolulu, Hawaii.

NOTE X

Within the 12-nautical mile Territorial Sea, established by Presidential Proclamation, some Federal laws apply. The Three Nautical Mile Line, previously identified as the outer limit of the territorial sea, is retained as it continues to depict the jurisdictional limit of the other laws. The 9-nautical mile Natural Resource Boundary off the Gulf coasts of Florida, Texas, and Puerto Rico, and the Three Nautical Mile Line elsewhere remain in most cases the inner limit of Federal fisheries jurisdiction and the outer limit of the jurisdiction of the states. The 24-nautical mile Contiguous Zone and the 200-nautical mile Exclusive Economic Zone were established by Presidential Proclamation. Unless first by treaty or the U.S. Supreme Court, these maritime limits are subject to change.

SOUNDINGS IN FATHOMS

(FATHOMS AND FEET TO 11 FATHOMS)




SOUNDINGS IN FATHOMS
 (FATHOMS AND FEET TO 11 FATHOMS)

Published at Washington, D.C.
 U.S. DEPARTMENT OF COMMERCE
 NATIONAL OCEANIC AND ATMOSPHERIC ADMINISTRATION
 NATIONAL OCEAN SERVICE
 COAST SURVEY

(POD) providers fulfill a vessel's requirement to carry a navigational chart "published by the National Ocean Service" in accordance with federal regulations, including but not limited to 33 C.F.R. 164.33(a), 33 C.F.R. 164.72(b)

| | | | | | | | | | | | | | | | | | |
|---------|---|----|----|----|----|----|----|----|----|----|----|----|----|----|----|----|-----|
| PATHOMS | 1 | 2 | 3 | 4 | 5 | 6 | 7 | 8 | 9 | 10 | 11 | 12 | 13 | 14 | 15 | 16 | 17 |
| FEET | 0 | 12 | 18 | 24 | 30 | 36 | 42 | 48 | 54 | 60 | 66 | 72 | 78 | 84 | 90 | 96 | 102 |
| METERS | 0 | 3 | 6 | 9 | 12 | 15 | 18 | 21 | 24 | 27 | 30 | 33 | 36 | 39 | 42 | 45 | 48 |

Bahia Laolao, Saipan Island and Tinian Harbor, Tinian Island
SOUNDINGS IN FATHOMS - SCALE 1:20,000

81071