

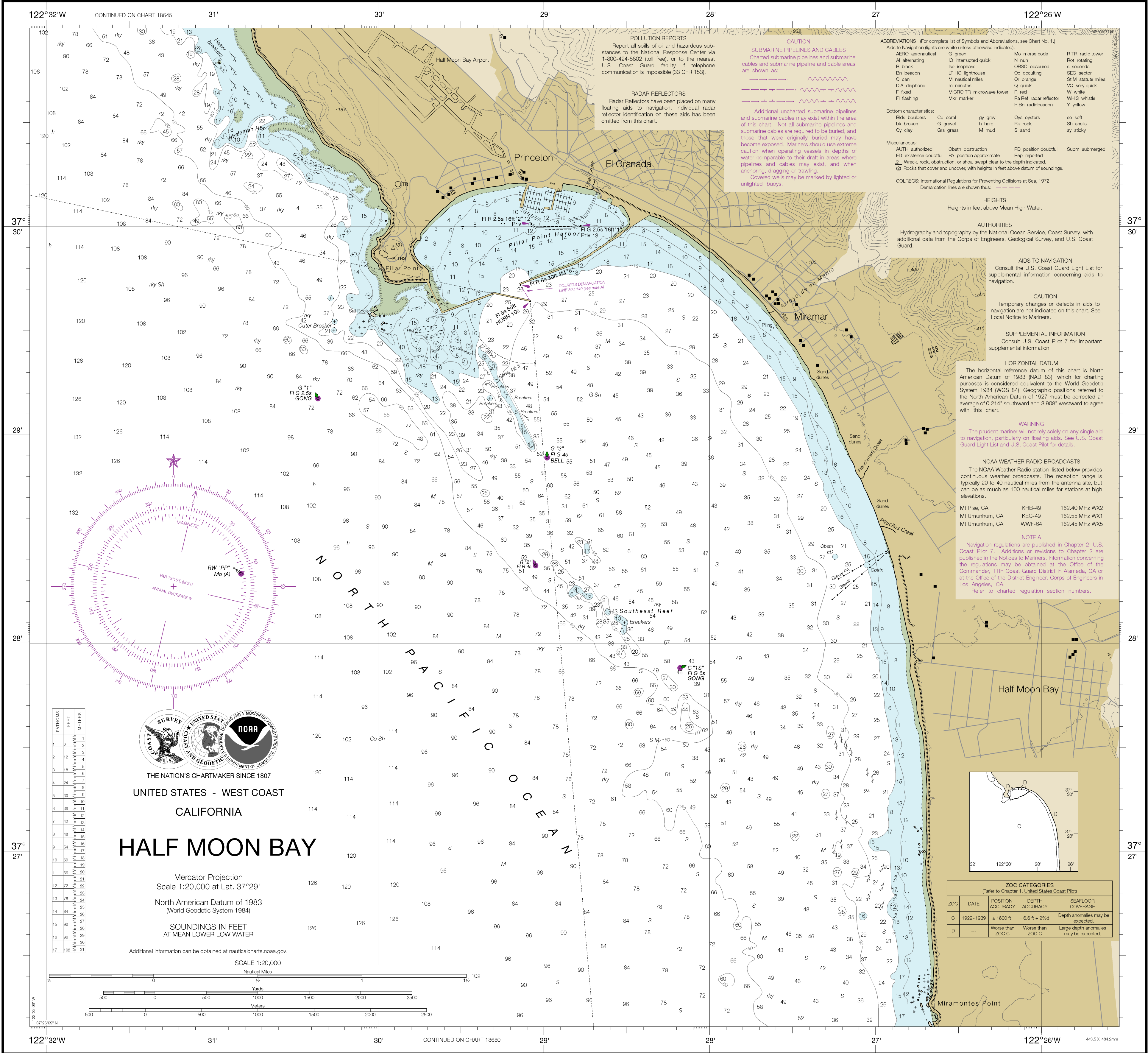
SOUNDINGS IN FEET

NOAA encourages users to submit inquiries, discrepancies or comments about this chart at <http://www.nauticalcharts.noaa.gov/staff/contact.htm>.

Formerly C&GS 5520, 1st Ed., June 1892 C-1863-1 KAPP 1867

PLACE		TIDAL INFORMATION		
NAME	(LAT/LONG)	Height referred to datum of soundings (MLLW)		
		Mean Higher High Water	Mean High Water	Mean Low Water
Pillar Point Harbor, Half Moon Bay, California	(37°30'N/122°29'W)	feet 5.6	feet 5.0	feet 1.1

Dashes (---) located in datum columns indicate unavailable datum values for a tide station. Real-time water levels, tide predictions, and tidal current predictions are available on the internet from <http://tidesandcurrents.noaa.gov>.
(Mar 2016)



18682

This chart has been corrected from the Notice to Mariners (NM) published weekly by the National Geospatial-Intelligence Agency and the Local Notice to Mariners (LNM) issued periodically by each U.S. Coast Guard district to the dates shown in the lower left hand corner. Chart updates corrected from Notice to Mariners published after the dates shown in the lower left hand corner are available at nauticalcharts.noaa.gov.

Published at Washington, D.C.
U.S. DEPARTMENT OF COMMERCE
NATIONAL OCEANIC AND ATMOSPHERIC ADMINISTRATION
NATIONAL OCEAN SERVICE
COAST SURVEY

SOUNDINGS IN FEET

Half Moon Bay
SOUNDINGS IN FEET - SCALE 1:20,000

18682

15th Ed., Apr. 2018, Last Correction: 10/5/2021. Cleared through:
LNM: 1222 (3/22/2022), NM: 1422 (4/2/2022)

This chart is canceled. No new editions will be issued.

To ensure that this chart was printed at the proper scale, the line below should measure six inches (152 millimeters).