

MERCATOR PROJECTION SCALE 1:20,000 AT 46°35'  
NORTH AMERICAN DATUM OF 1983  
(WORLD GEODETIC SYSTEM 1984)  
SOUNDINGS AND OVERHEAD CLEARANCES IN FEET

Soundings and vertical clearances are referred to the respective pool elevations above mean sea level which are 440 feet west of Lower Monumental Dam, 540 feet in Lake Herbert G. West and 635 feet east of Lake Goosse Dam.

The water level in the upper pool above Lower Monumental Dam may fluctuate without warning between 537 feet MSL (pool low water elevation) and the 540 feet MSL (normal pool) sounding datum.

Mariners are advised to use caution due to possible change in water level.

**HEIGHTS**  
 Heights are in feet. Contour elevations refer to mean sea level.

**AUTHORITIES**

SUPPLEMENTAL INFORMATION

**CAUTION**

The depths of water on this chart have been determined from conditions existing *prior to the filling of the pool*. Shadier depths than charted may exist within the

**CAUTION**

This chart has been corrected from the Notice to Mariners (NM) published weekly by the National Geospatial-Intelligence Agency and the Local Notice to Mariners.

**HORIZONTAL DATUM**  
The horizontal reference datum of this chart

is North American Datum of 1983 (NAD 83), which for charting purposes is considered equivalent to the World Geodetic System 1984 (WGS 84). Geographic positions referred to the North American Datum of 1927 must be corrected an average of 0.462' southward and 3.894' westward.

NOAA encourages users to submit inquiries, discrepancies or comments.

Reported on Global Access to Information Portal on 10/10/2014  
about this chart at <http://www.nationalarchives.gov.uk/contact.htm>

To ensure that all of the time does not

© 2004 Blackwell Publishing Ltd, *Journal of Internal Medicine* 255: 103–110

at the proper scale, to  
 1000 instruments, to

The line below should  
copy is not correct

DOI: 10.1002/for

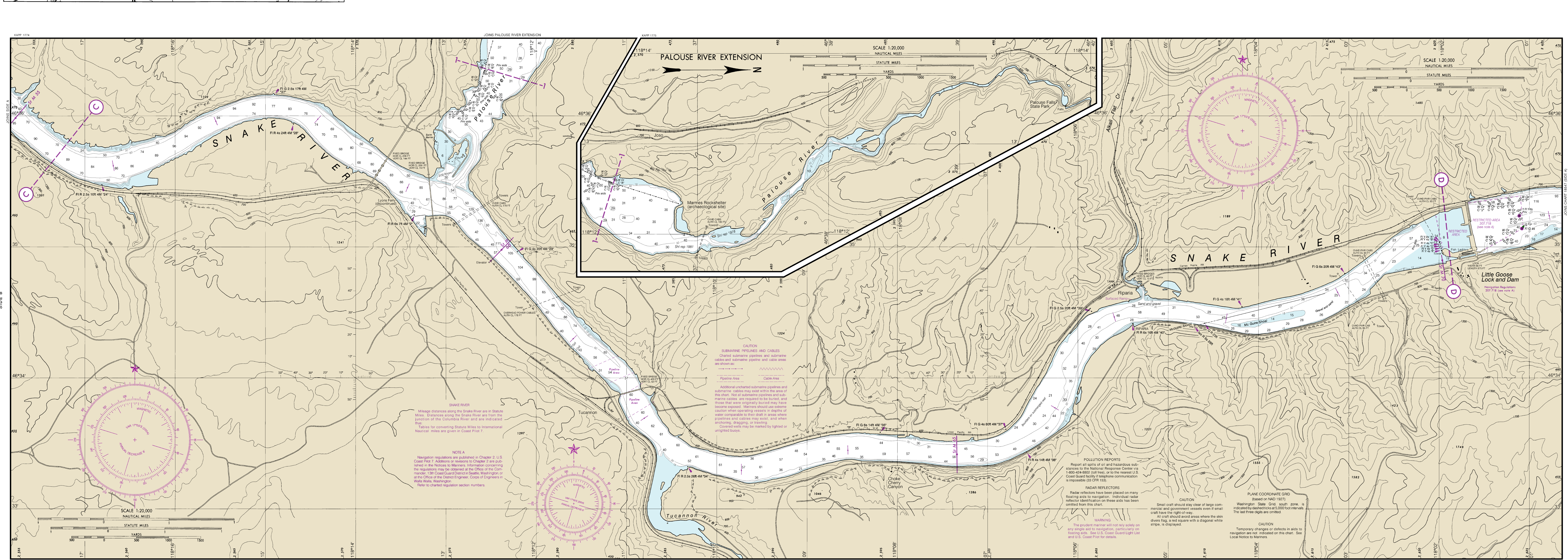
Copyright © 2004 John Wiley & Sons, Ltd.

\_\_\_\_\_

\_\_\_\_\_

1

This is the Last Edition of this chart. It will be canceled on Jul 2, 2024



(POD) providers fulfill a vessel's requirement to carry a navigational chart "published by the National Ocean Service" in accordance with federal regulations, including but not limited to 33 C.F.R. 164.33(a), 33 C.F.R. 164.72(b),