

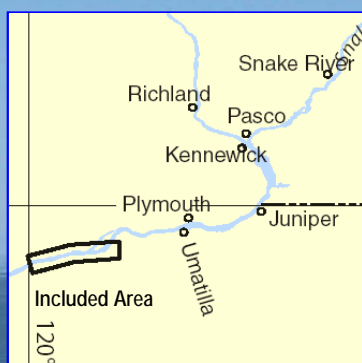
BookletChart™

Columbia River – Alderdale to Blalock Islands

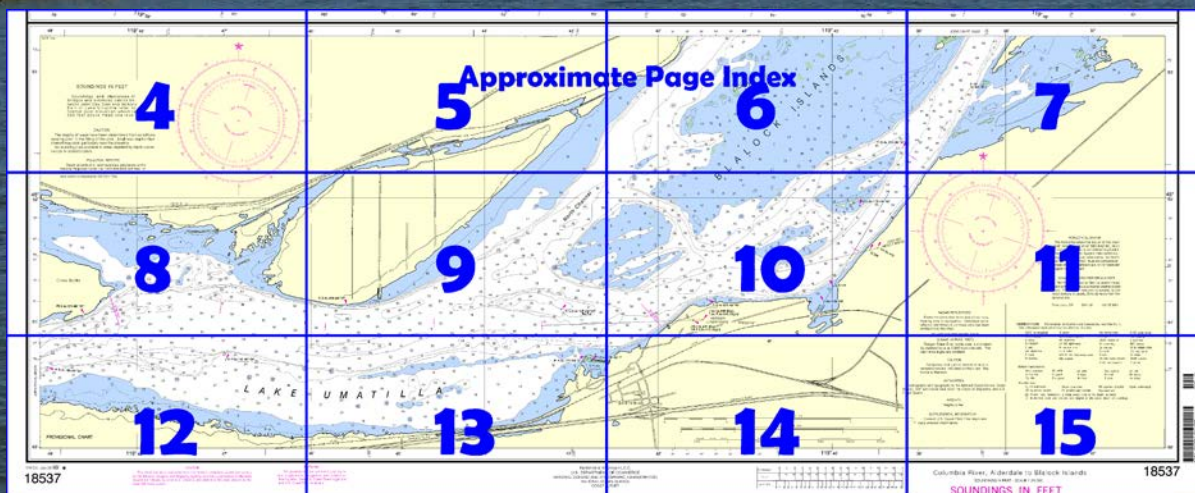
NOAA Chart 18537

A reduced-scale NOAA nautical chart for small boaters

When possible, use the full-size NOAA chart for navigation.



- Complete, reduced-scale nautical chart
- Print at home for free
- Convenient size
- Up-to-date with Notices to Mariners
- Compiled by NOAA's Office of Coast Survey, the nation's chartmaker



Published by the
National Oceanic and Atmospheric Administration
National Ocean Service
Office of Coast Survey
www.NauticalCharts.NOAA.gov
888-990-NOAA

What are Nautical Charts?

Nautical charts are a fundamental tool of marine navigation. They show water depths, obstructions, buoys, other aids to navigation, and much more. The information is shown in a way that promotes safe and efficient navigation. Chart carriage is mandatory on the commercial ships that carry America's commerce. They are also used on every Navy and Coast Guard ship, fishing and passenger vessels, and are widely carried by recreational boaters.

What is a BookletChart™?

This BookletChart is made to help recreational boaters locate themselves on the water. It has been reduced in scale for convenience, but otherwise contains all the information of the full-scale nautical chart. The bar scales have also been reduced, and are accurate when used to measure distances in this BookletChart. See the Note at the bottom of page 5 for the reduction in scale applied to this chart.

Whenever possible, use the official, full scale NOAA nautical chart for navigation. Nautical chart sales agents are listed on the Internet at <http://www.NauticalCharts.NOAA.gov>.

This BookletChart does NOT fulfill chart carriage requirements for regulated commercial vessels under Titles 33 and 44 of the Code of Federal Regulations.

Notice to Mariners Correction Status

This BookletChart has been updated for chart corrections published in the U.S. Coast Guard Local Notice to Mariners, the National Geospatial Intelligence Agency Weekly Notice to Mariners, and, where applicable, the Canadian Coast Guard Notice to Mariners. Additional chart corrections have been made by NOAA in advance of their publication in a Notice to Mariners. The last Notices to Mariners applied to this chart are listed in the Note at the bottom of page 7. Coast Pilot excerpts are not being corrected.

For latest Coast Pilot excerpt visit the Office of Coast Survey website at <http://www.nauticalcharts.noaa.gov/nsd/searchbychart.php?chart=18537>.



(Selected Excerpts from Coast Pilot)

John Day Dam, 188 (216.3) miles above the mouth of the Columbia and 21 miles above The Dalles Dam, has a single lift lock with a vertical lift of about 105 feet. **Restricted areas** are above and below the dam. (See **207.718**, chapter 2, for information concerning use, administration, and navigation of John Day Dam.) Depths and overhead clearances are at **normal pool level**. The rock awash near the E approach to John Day Locks in 45°43'25"N.,

120°41'20"W. is marked by a light and sign; mariners are urged to exercise caution when passing N of Lake Umatilla Lighted Buoy 2, so as

to avoid being carried to the NW and striking the rock awash.

Lake Umatilla, the pool created by John Day Dam, extends 65 (75) miles to McNary Dam. Depths are generally great, but there are many shoals. The winding channel through the lake has a controlling depth of about 19 feet and is marked by aids to navigation. The chart is the best guide. An overhead power cable with a clearance of 95 feet is about 41 (47.2) miles above John Day Dam.

John Day River is 2.3 miles above John Day Dam on the S side of the Columbia. Just S of the highway bridges over the entrance to the river is the **John Day River Recreation Area**. There are floats here for about 40 craft and a launching ramp. The fixed highway bridges have a clearance of 19 feet.

A grain elevator with barge-loading facilities is at **Arlington**, OR, 21.5 (24.7) miles above John Day Dam. A loading tower for the elevator is marked by a light. Small-craft moorage and a launching ramp are available at Arlington.

At **Boardman**, 45.6 (52.5) miles above the John Day Dam, there is a small-craft basin protected by a stone breakwater and a jetty. Berths and a launching ramp are available here.

There are two woodchip docks, a general cargo dock, and a grain elevator dock at a port about 1.2 miles NE of the small-craft basin at Boardman.

A grain elevator dock and barge loading pier is on the Oregon side of the river, about 3 miles NW of Irrigon, OR.

Umatilla is on the Oregon side 62 (71.3) miles above the John Day Dam. There is a small-craft basin about 500 yards W of the highway bridge. The E side of the entrance is marked by a light. About 125 covered and uncovered berths, electricity, gasoline, diesel fuel, water, and ice are available. A concrete launching ramp is at the basin.

The fixed parallel highway bridges across the river, 63 (72.5) miles above the John Day Dam near Umatilla, each has two navigational spans with a least clearance of 71 feet. The N openings are generally used during high water because there is less current, but during low water it is unsafe. The power cables E of the fixed parallel highway bridges have a least clearance of 82 feet.

U.S. Coast Guard Rescue Coordination Center
24 hour Regional Contact for Emergencies

RCC Seattle

Commander
13th CG District
Seattle, WA

(206) 220-7001

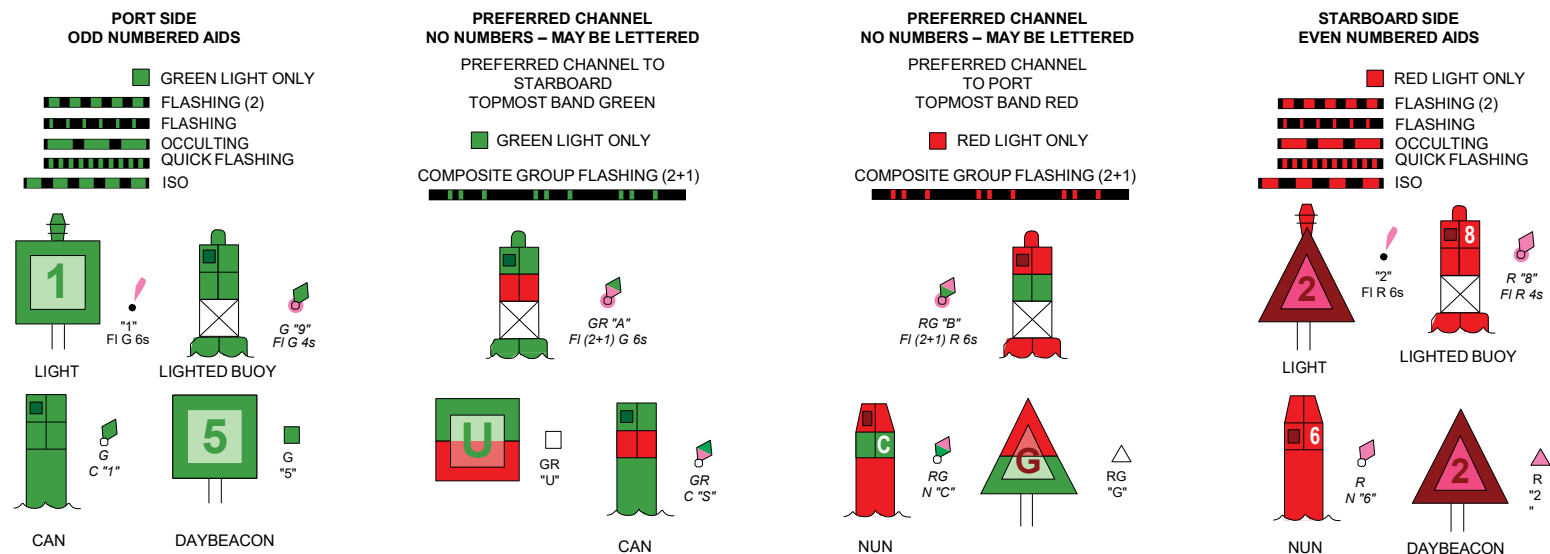
Navigation Manager Regions



To make suggestions, ask questions, or report a problem with a chart, go to <https://www.nauticalcharts.noaa.gov/customer-service/assist/>

Lateral System As Seen Entering From Seaward

on navigable waters except Western Rivers

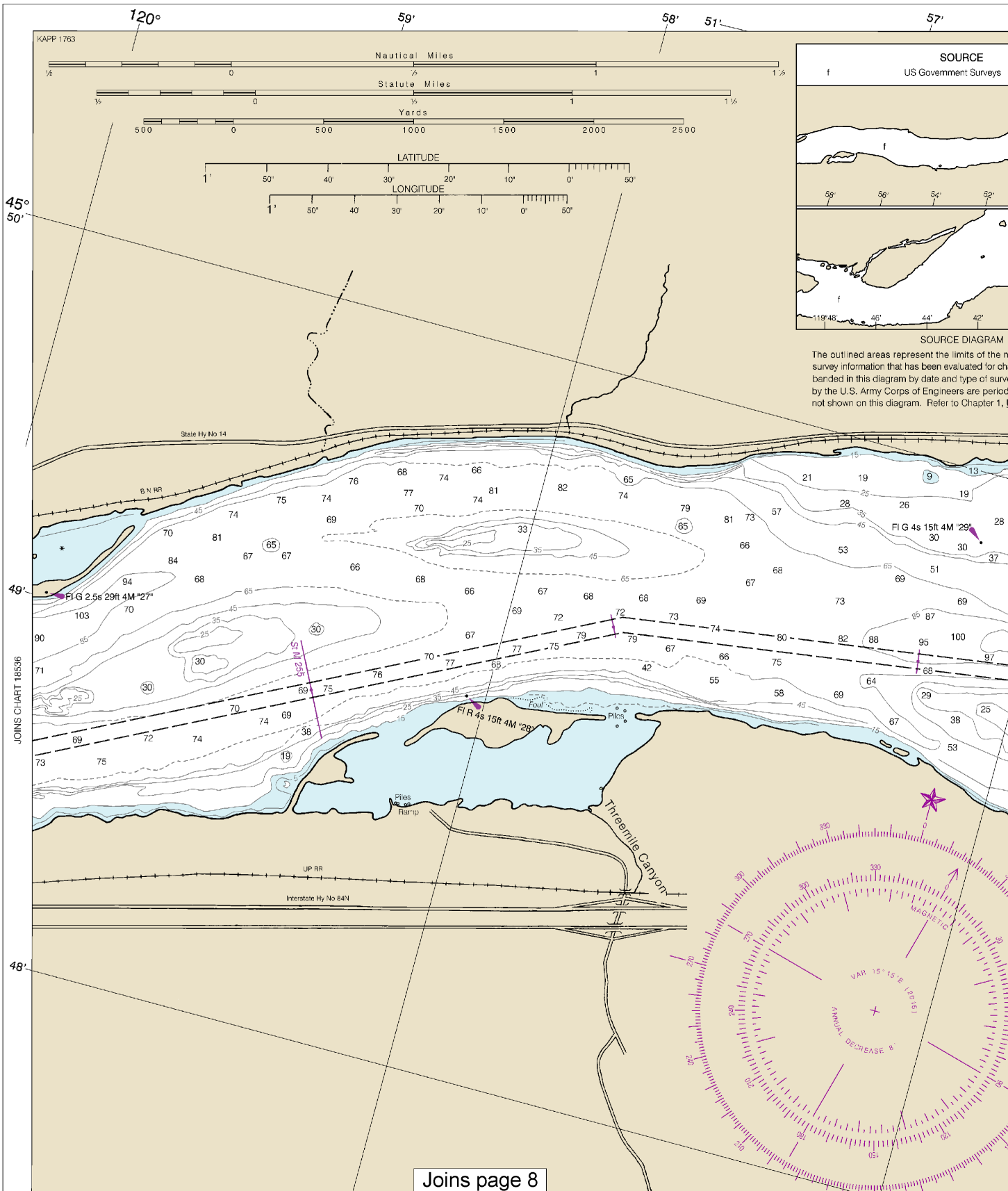


For more information on aids to navigation, including those on Western Rivers, please consult the latest USCG Light List for your area. These volumes are available online at <http://www.navcen.uscg.gov>

SOUNDINGS IN FEET

NOAA encourages users to submit inquiries, discrepancies or comments about this chart at <http://www.nauticalcharts.noaa.gov/staff/contact.htm>.

18537



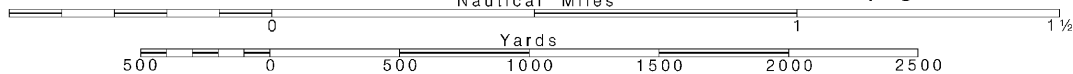
4

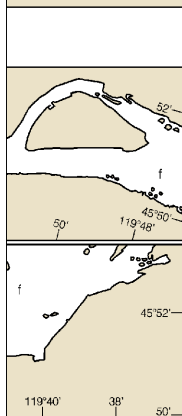
Note: Chart grid lines are aligned with true north.

Printed at reduced scale.

SCALE 1:20,000
Nautical Miles

See Note on page 5.





most recent hydrographic
haring. Surveys have been
vey. Channels maintained
dically resurveyed and are
United States Coast Pilot.



THE NATION'S CHARTMAKER SINCE 1807

PROVISIONAL CHART

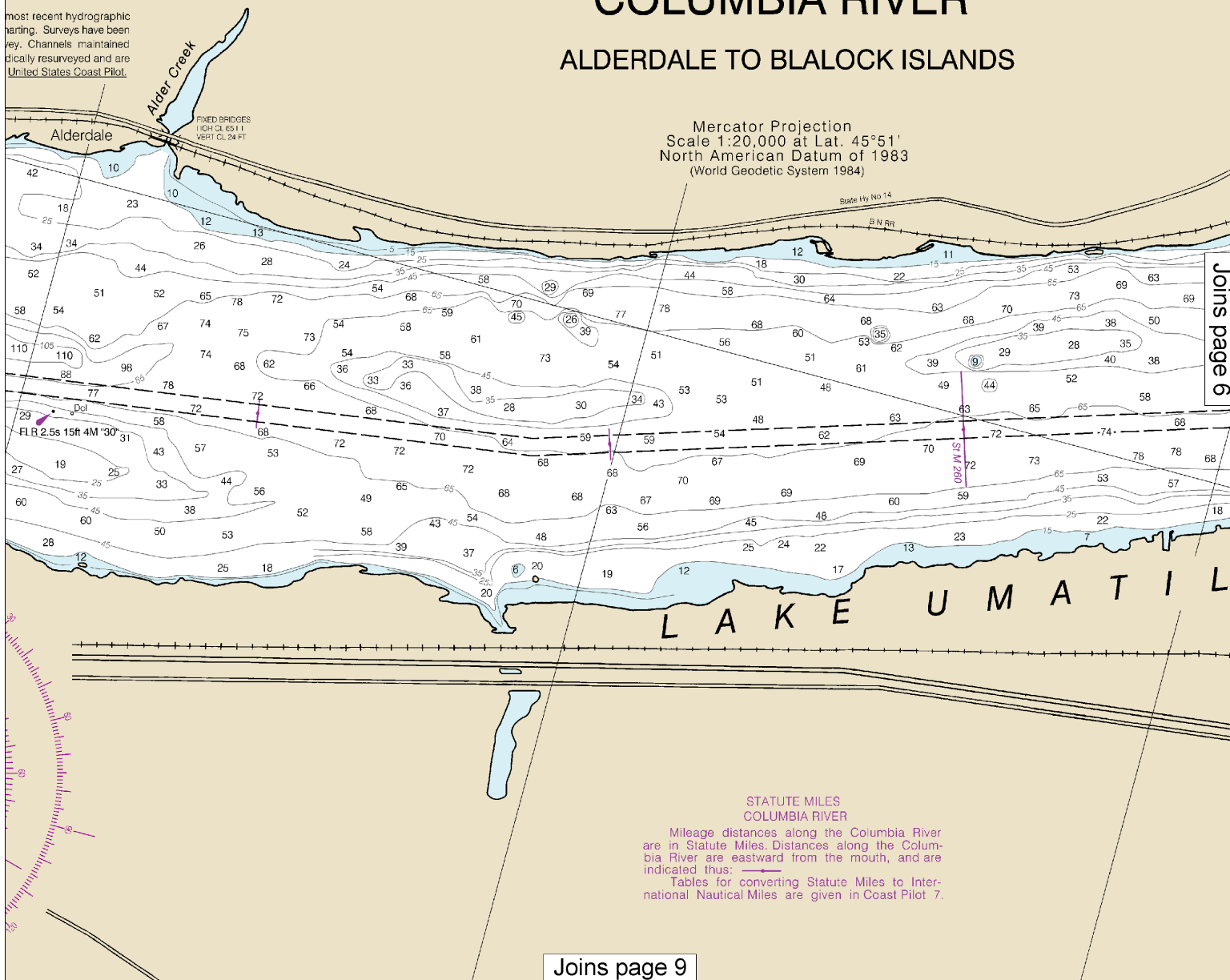
UNITED STATES - WEST COAST

OREGON - WASHINGTON

COLUMBIA RIVER

ALDERDALE TO BLALOCK ISLANDS

Mercator Projection
Scale 1:20,000 at Lat. 45°51'
North American Datum of 1983
(World Geodetic System 1984)



This BookletChart was reduced to 75% of the original chart scale.
The new scale is 1:26666. Barscales have also been reduced and
are accurate when used to measure distances in this BookletChart.



THE NATION'S CHARTMAKER SINCE 1807

PROVISIONAL CHART

UNITED STATES - WEST COAST

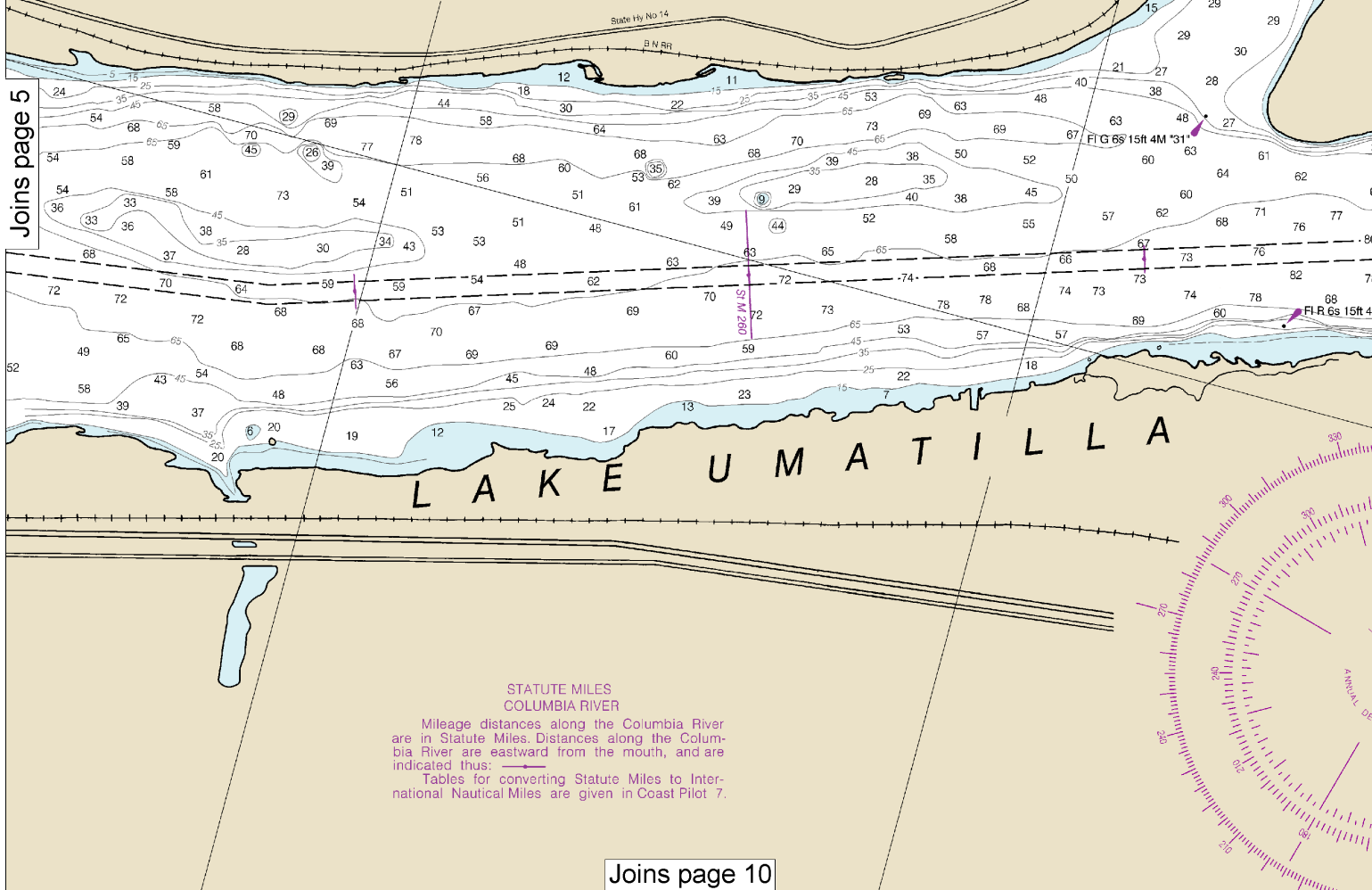
OREGON - WASHINGTON

COLUMBIA RIVER

ALDERDALE TO BLALOCK ISLANDS

Mercator Projection
Scale 1:20,000 at Lat. 45°51'
North American Datum of 1983
(World Geodetic System 1984)

Joins page 5



Joins page 10

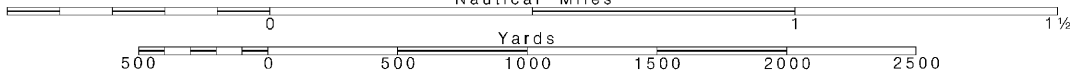
6

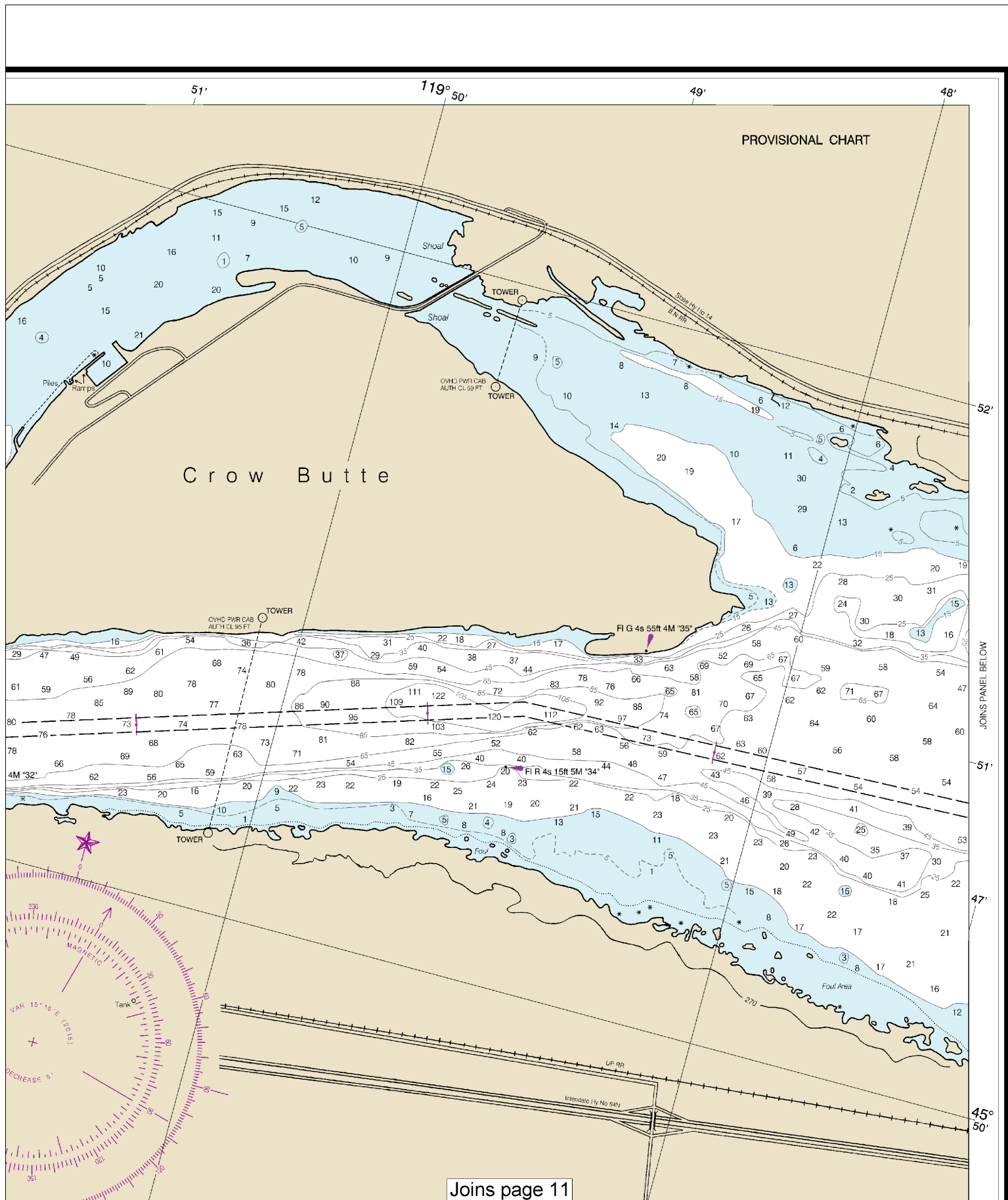
Note: Chart grid lines are aligned with true north.

Printed at reduced scale.

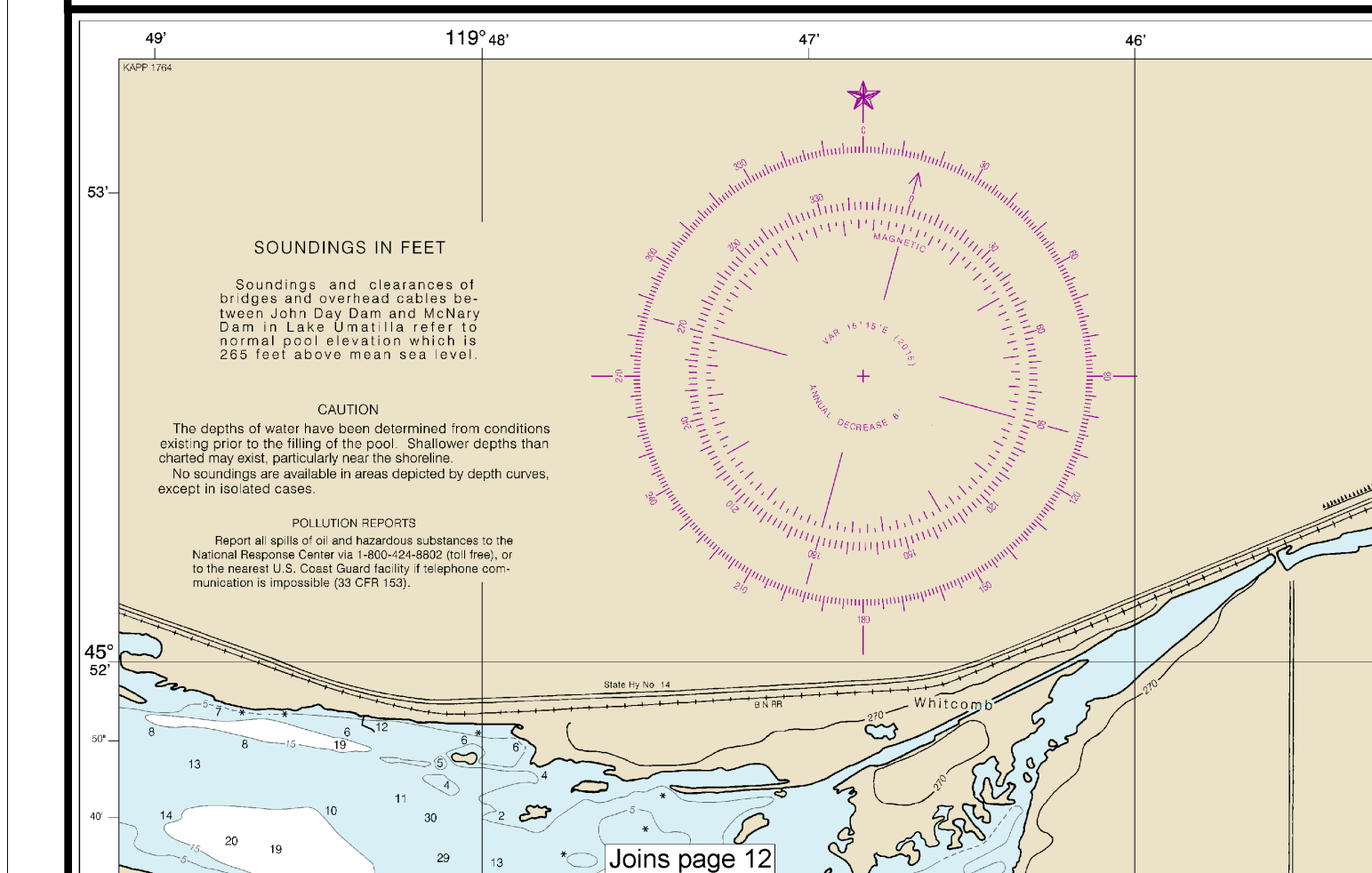
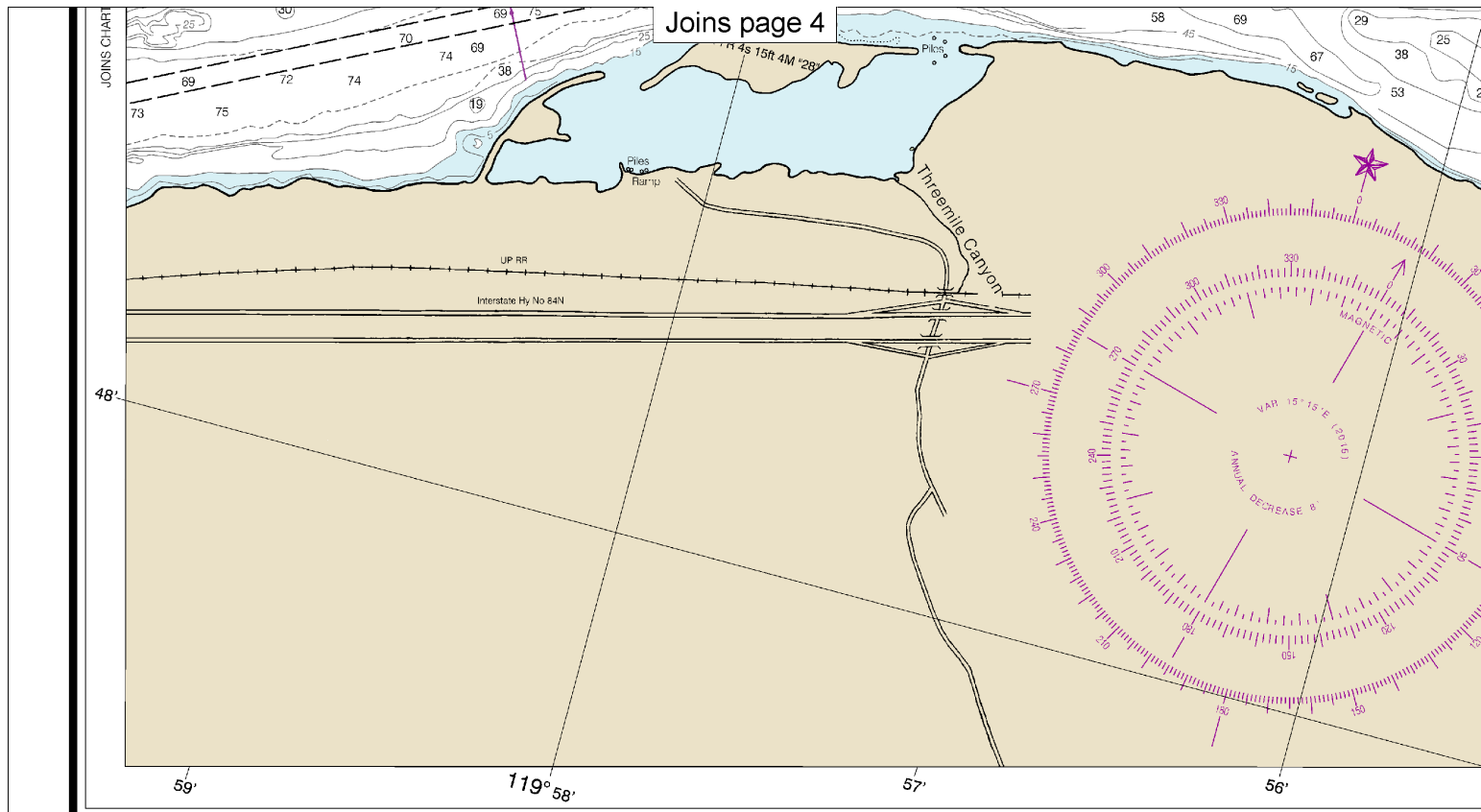
SCALE 1:20,000
Nautical Miles

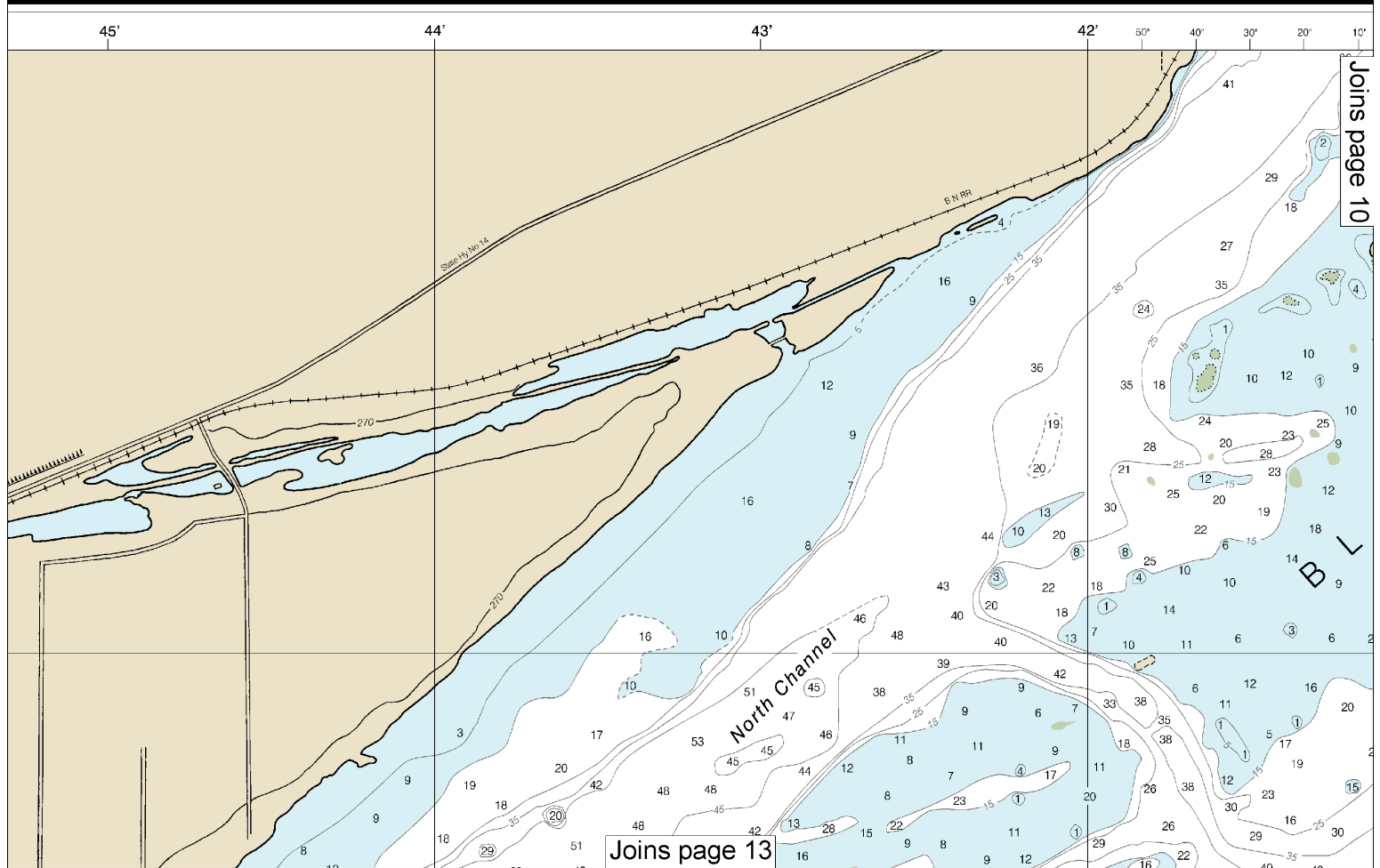
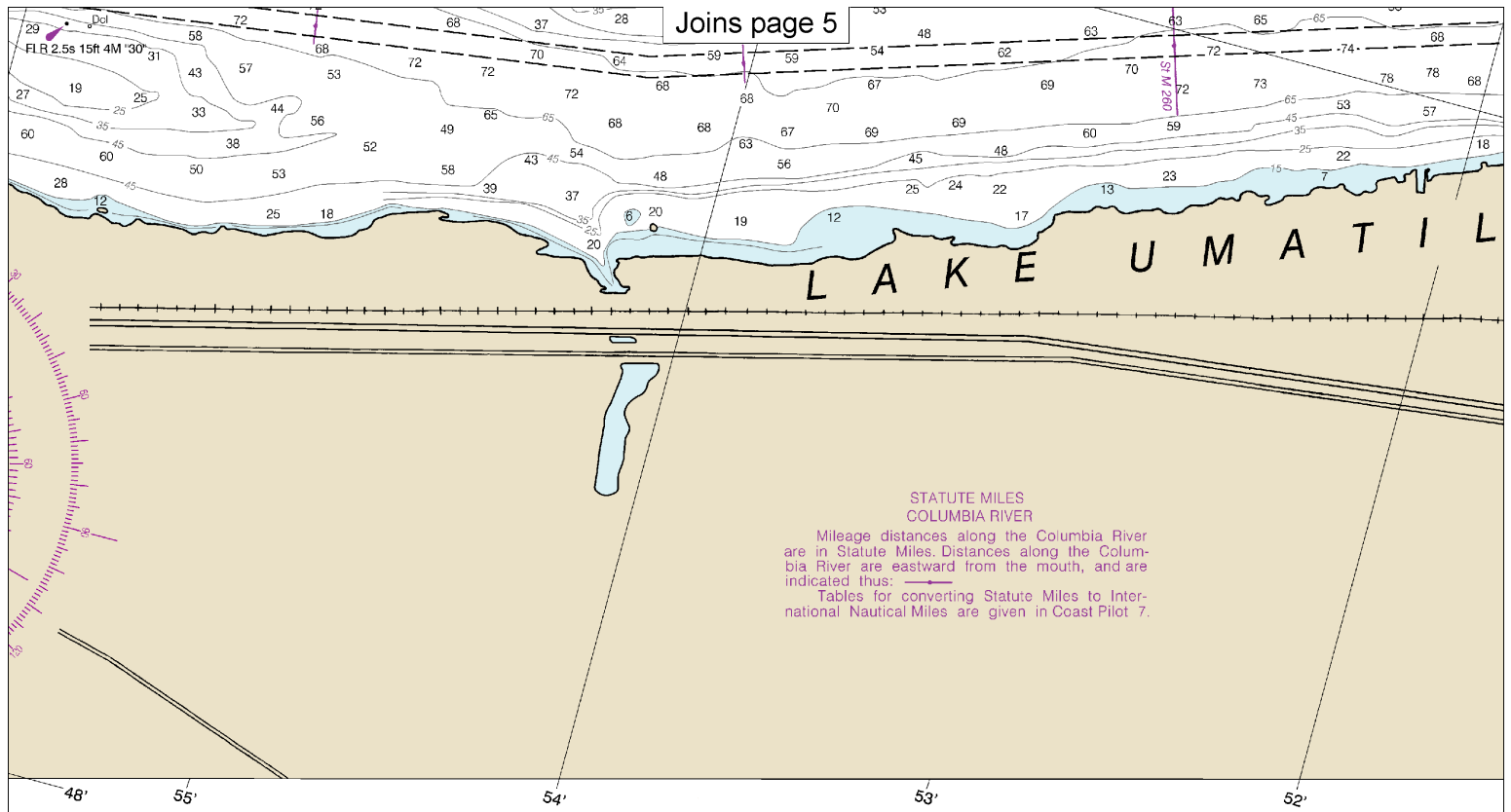
See Note on page 5.

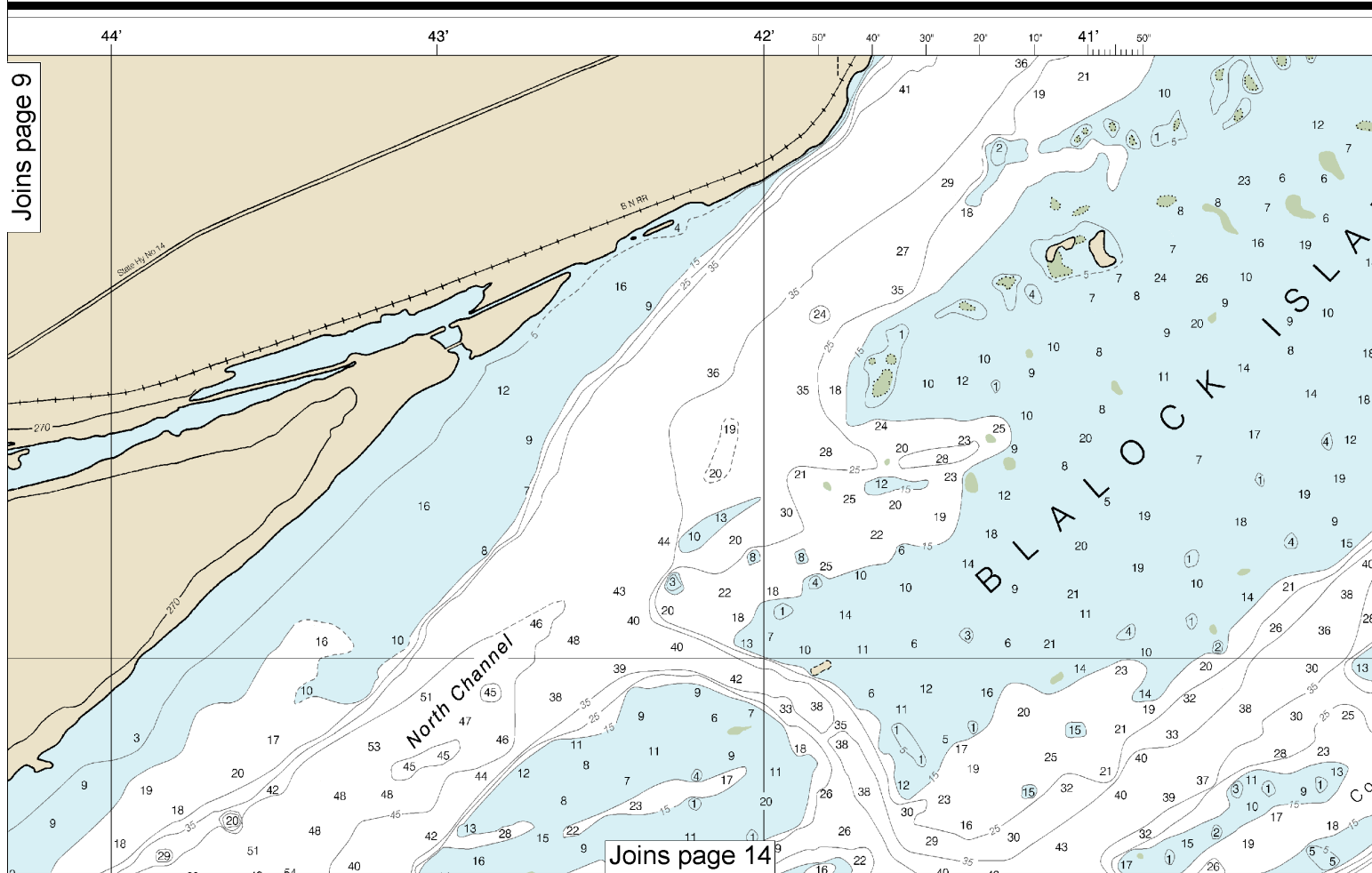
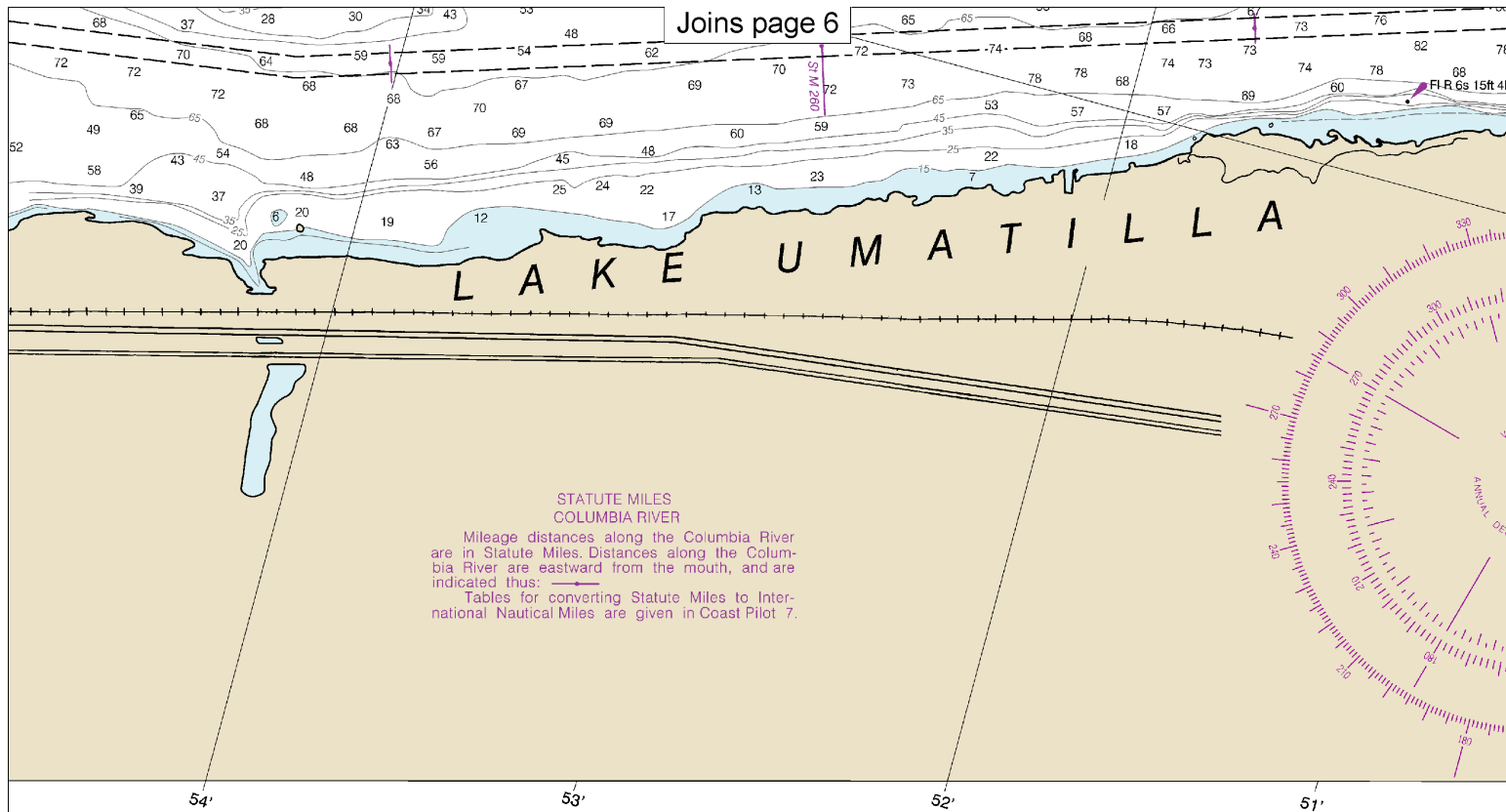




This is the Last Edition of this chart. It will be canceled on Jul 2, 2024
12th Ed. Dec. 2015 Last Correction: 1/2/2024. Cleared through:
LNM: 2124 (5/21/2024), NM: 2224 (6/1/2024), CHS: 0224 (2/23/2024)

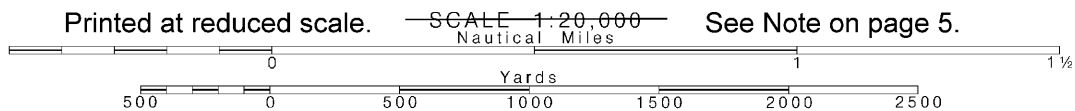


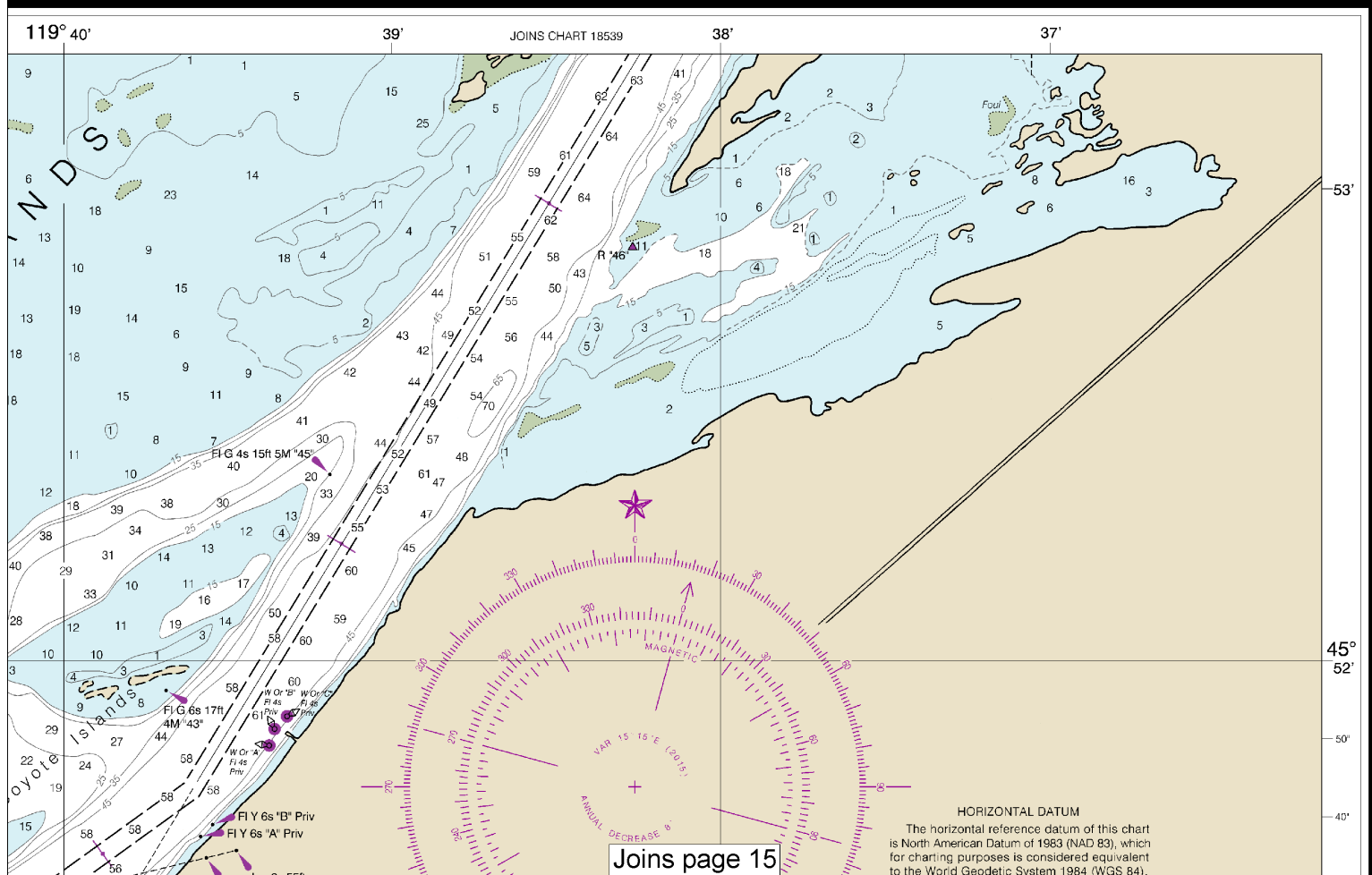
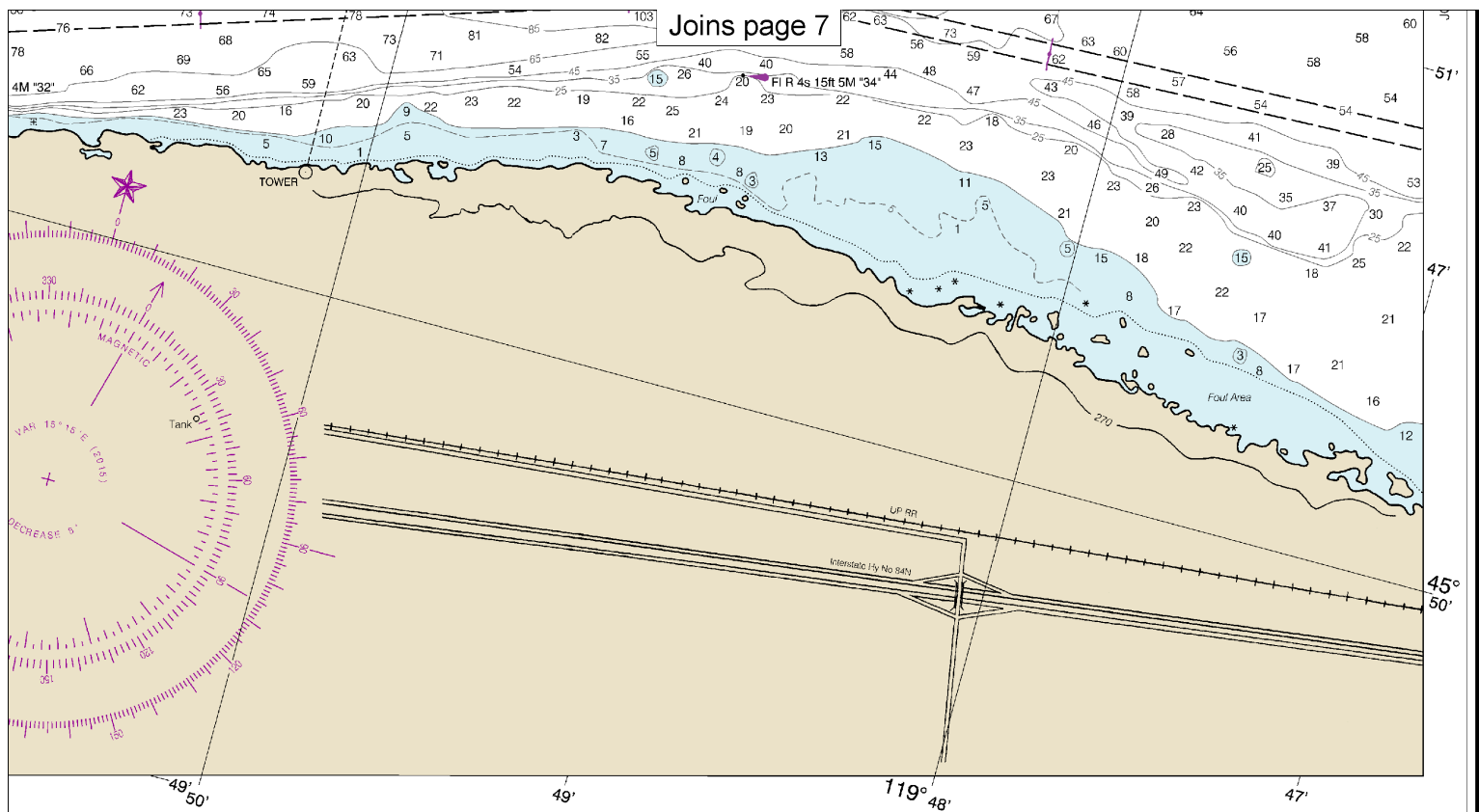




10

Note: Chart grid lines are aligned with true north.





SOUNDINGS IN FEET

Soundings and clearances of bridges and overhead cables between John Day Dam and McNary Dam in Lake Umatilla refer to normal pool elevation which is 265 feet above mean sea level.

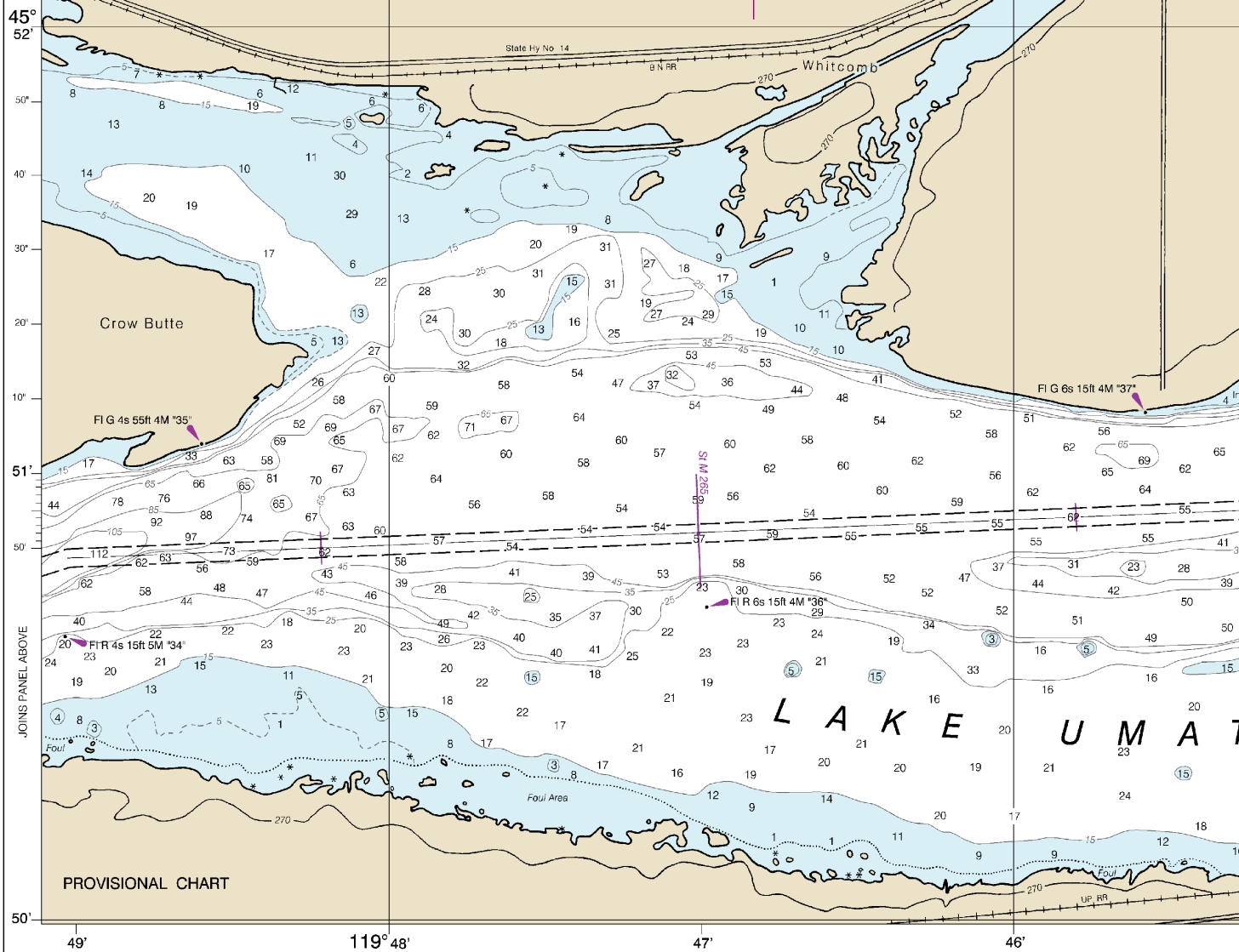
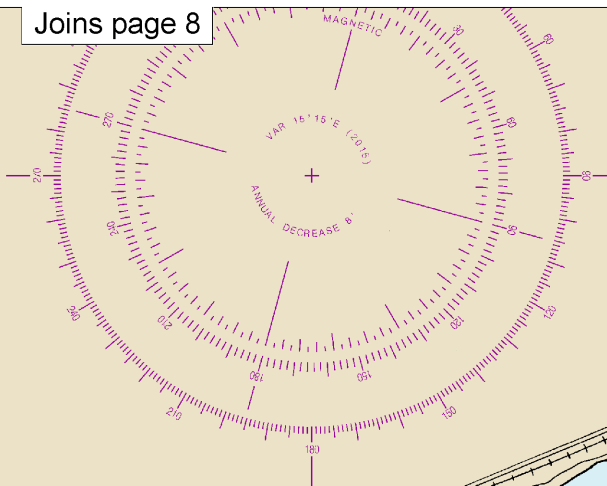
CAUTION

The depths of water have been determined from conditions existing prior to the filling of the pool. Shallower depths than charted may exist, particularly near the shoreline.
No soundings are available in areas depicted by depth curves, except in isolated cases.

POLLUTION REPORTS

Report all spills of oil and hazardous substances to the National Response Center via 1-800-424-8802 (toll free), or to the nearest U.S. Coast Guard facility if telephone communication is impossible (33 CFR 153).

Joins page 8



CAUTION

This chart has been corrected from the Notice to Mariners (NM) published weekly by the National Geospatial-Intelligence Agency and the Local Notice to Mariners (LNM) issued periodically by each U.S. Coast Guard district to the dates shown in the lower left hand corner. Chart updates corrected from Notice to Mariners published after the dates shown in the lower left hand corner are available at nauticalcharts.noaa.gov.

WARNING

The prudent mariner will not rely solely on any single aid to navigation, particularly on floating aids. See U.S. Coast Guard Light List and U.S. Coast Pilot for details.

18537

This is the Last Edition of this chart. It will be canceled on Jul 2, 2024
12th Ed., Dec. 2015. Last Correction: 1/2/2024. Cleared through:
LNM: 2124 (5/21/2024), NM: 2224 (6/1/2024), CHS: 0224 (2/23/2024)

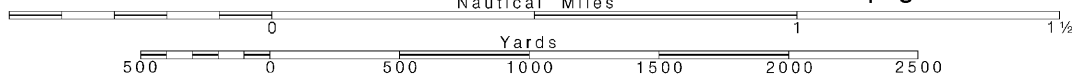
12

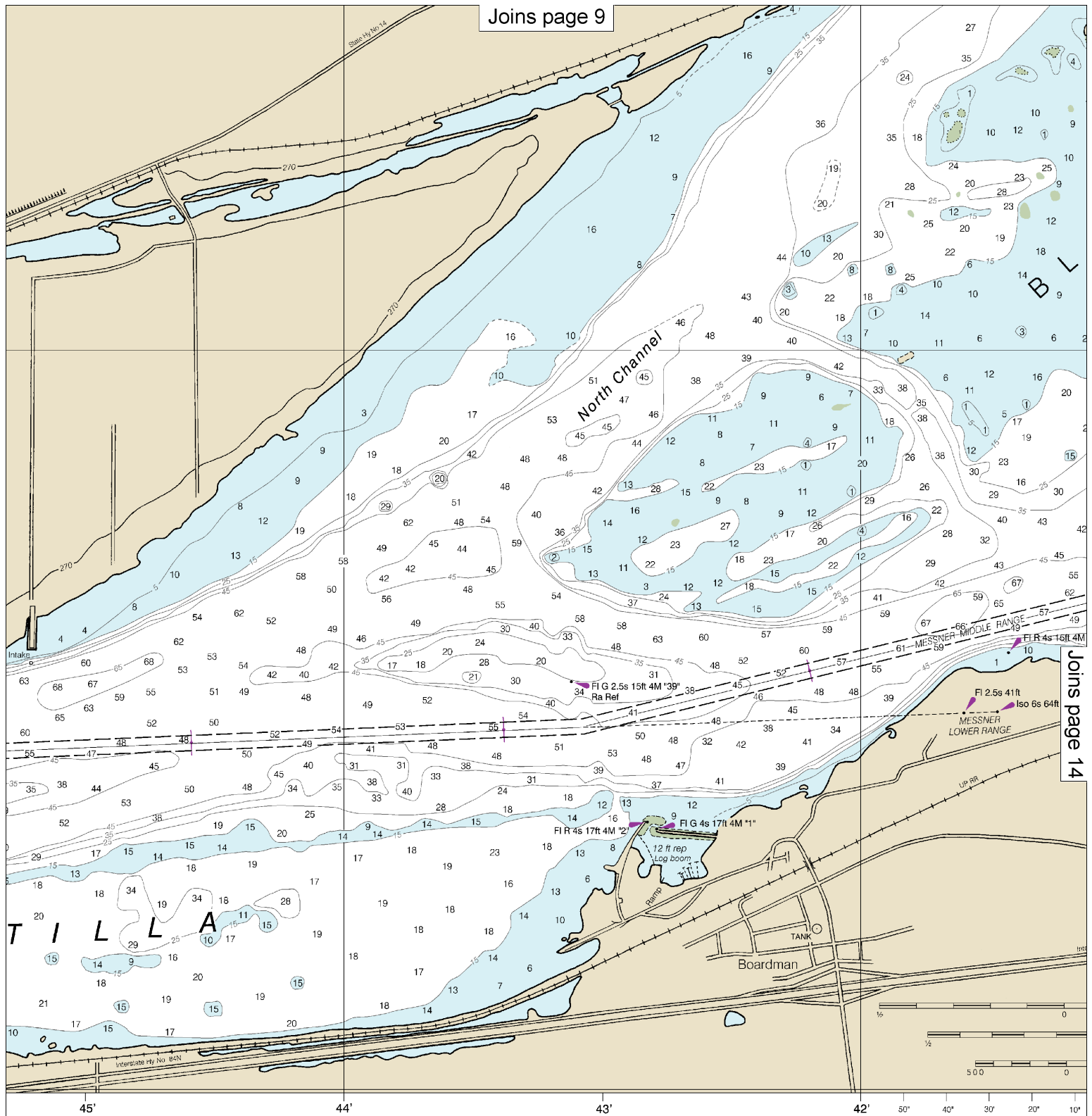
Note: Chart grid lines are aligned with true north.

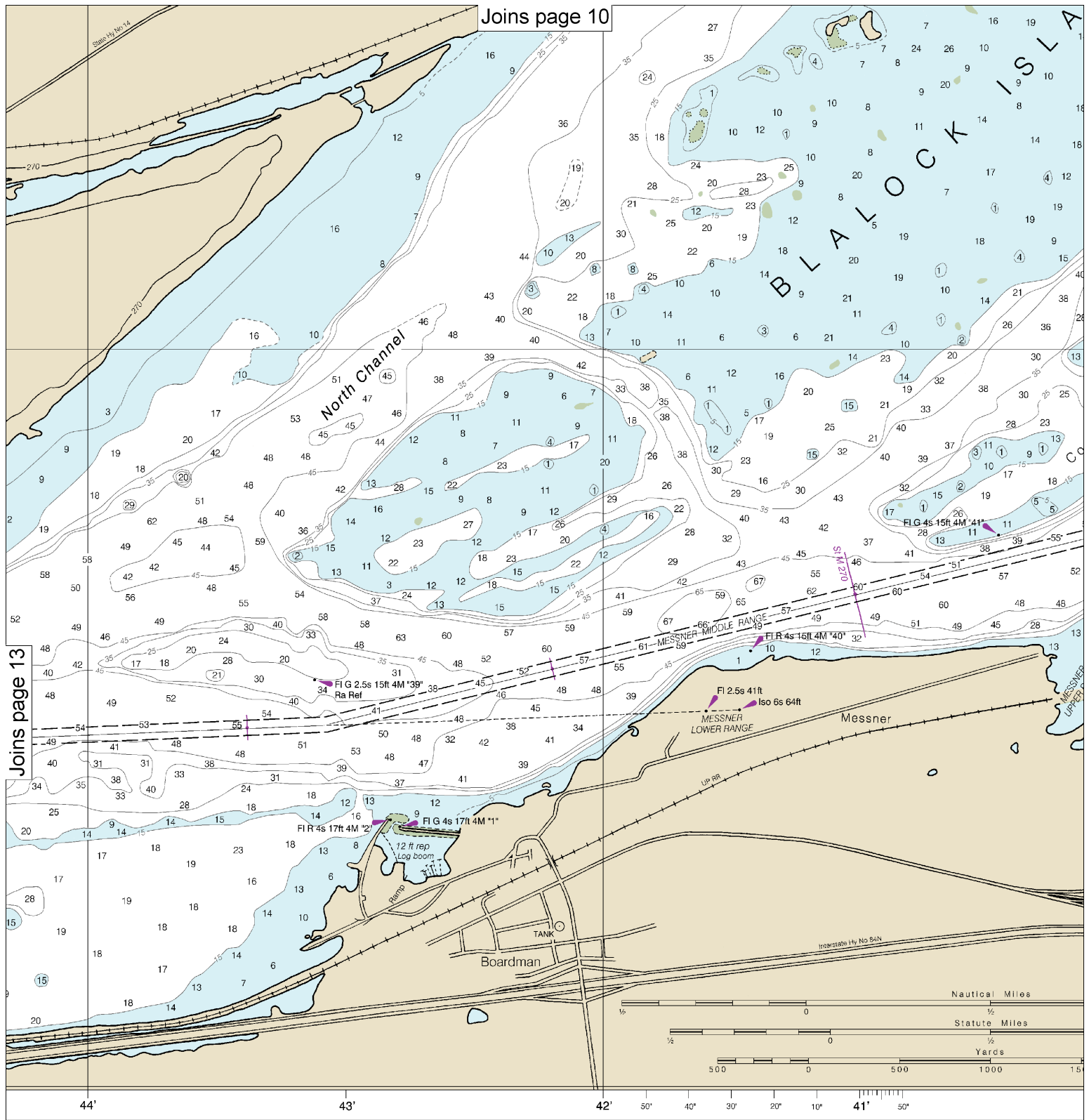
Printed at reduced scale.

SCALE 1:20,000
Nautical Miles

See Note on page 5.







Joins page 10

Joins page 13

Published at Washington, D.C.
U.S. DEPARTMENT OF COMMERCE
NATIONAL OCEANIC AND ATMOSPHERIC ADMINISTRATION
NATIONAL OCEAN SERVICE
COAST SURVEY

FATHOMS	1	2	3	4	5	6
FEET	6	12	18	24	30	36
METERS	1	2	3	4	5	6

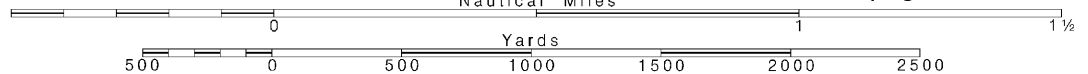
14

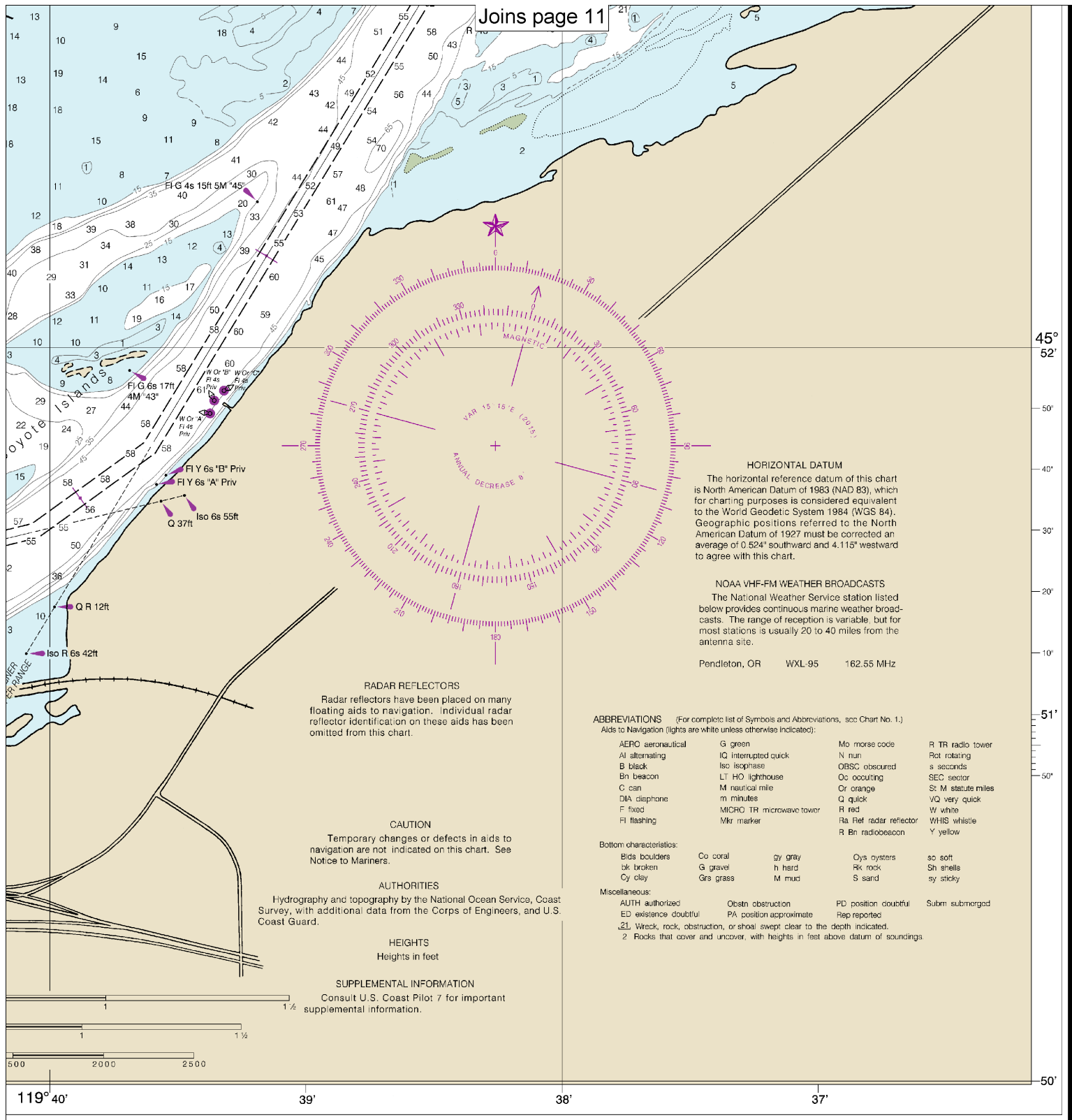
Note: Chart grid lines are aligned with true north.

Printed at reduced scale.

SCALE 1:20,000
Nautical Miles

See Note on page 5.





Columbia River, Alderdale to Blalock Islands

SOUNDINGS IN FEET - SCALE 1:20,000

SOUNDINGS IN FEET

18537

15



EMERGENCY INFORMATION

VHF Marine Radio channels for use on the waterways:

Channel 6 – Inter-ship safety communications.

Channel 9 – Communications between boats and ship-to-coast.

Channel 13 – Navigation purposes at bridges, locks, and harbors.

Channel 16 – Emergency, distress and safety calls to Coast Guard and others, and to initiate calls to other

vessels. Contact the other vessel, agree to another channel, and then switch.

Channel 22A – Calls between the Coast Guard and the public. Severe weather warnings, hazards to navigation and safety warnings are broadcast here.

Channels 68, 69, 71, 72 and 78A – Recreational boat channels.

Getting and Giving Help — Signal other boaters using visual distress signals (flares, orange flag, lights, arm signals); whistles; horns; and on your VHF radio. You are required by law to help boaters in trouble. Respond to distress signals, but do not endanger yourself.



NOAA Weather Radio All Hazards (NWR) is a nationwide network of radio stations broadcasting continuous weather information directly from the nearest National Weather Service office. NWR broadcasts official Weather Service warnings, watches, forecasts and other hazard information 24 hours a day, 7 days a week.

<http://www.nws.noaa.gov/nwr/>

Distress Call Procedures

- Make sure radio is on.
- Select Channel 16.
- Press/Hold the transmit button.
- Clearly say: "MAYDAY, MAYDAY, MAYDAY."
- Also give: Vessel Name and/or Description; Position and/or Location; Nature of Emergency; Number of People on Board.
- Release transmit button.
- Wait for 10 seconds — If no response Repeat MAYDAY call.

HAVE ALL PERSONS PUT ON LIFE JACKETS!

Quick References

Nautical chart related products and information	—	http://www.nauticalcharts.noaa.gov
Interactive chart catalog	—	http://www.charts.noaa.gov/InteractiveCatalog/nrnc.shtml
Report a chart discrepancy	—	http://ocsddata.ncd.noaa.gov/idrs/discrepancy.aspx
Chart and chart related inquiries and comments	—	http://ocsddata.ncd.noaa.gov/idrs/inquiry.aspx?frompage=ContactUs
Chart updates (LNM and NM corrections)	—	http://www.nauticalcharts.noaa.gov/mcd/updates/LNM_NM.html
Coast Pilot online	—	http://www.nauticalcharts.noaa.gov/nsd/cpdownload.htm
Tides and Currents	—	http://tidesandcurrents.noaa.gov
Marine Forecasts	—	http://www.nws.noaa.gov/om/marine/home.htm
National Data Buoy Center	—	http://www.ndbc.noaa.gov/
NowCoast web portal for coastal conditions	—	http://www.nowcoast.noaa.gov/
National Weather Service	—	http://www.weather.gov/
National Hurricane Center	—	http://www.nhc.noaa.gov/
Pacific Tsunami Warning Center	—	http://ptwc.weather.gov/
Contact Us	—	http://www.nauticalcharts.noaa.gov/staff/contact.htm



— For the latest news from Coast Survey, follow **@NOAAcharts**



This Booklet chart has been designed for duplex printing (printed on front and back of one sheet). If a duplex option is not available on your printer, you may print each sheet and arrange them back-to-back to allow for the proper layout when viewing.