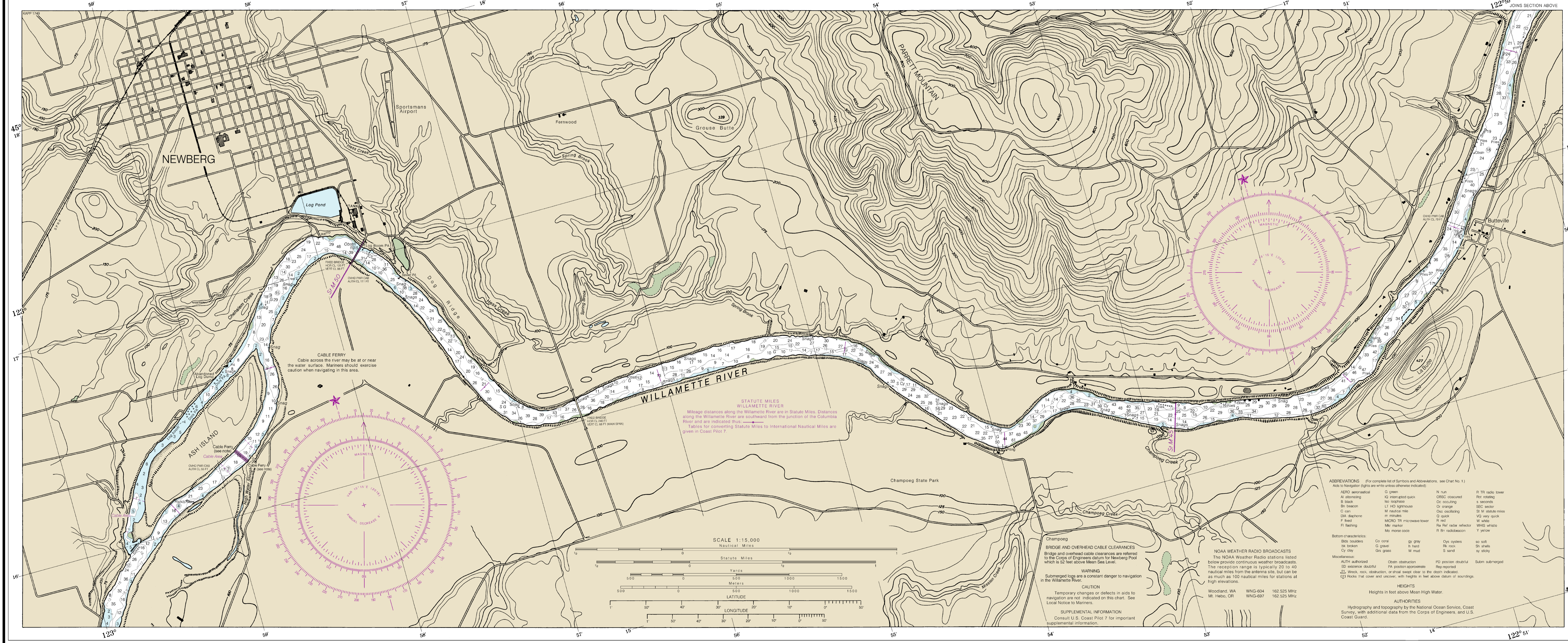
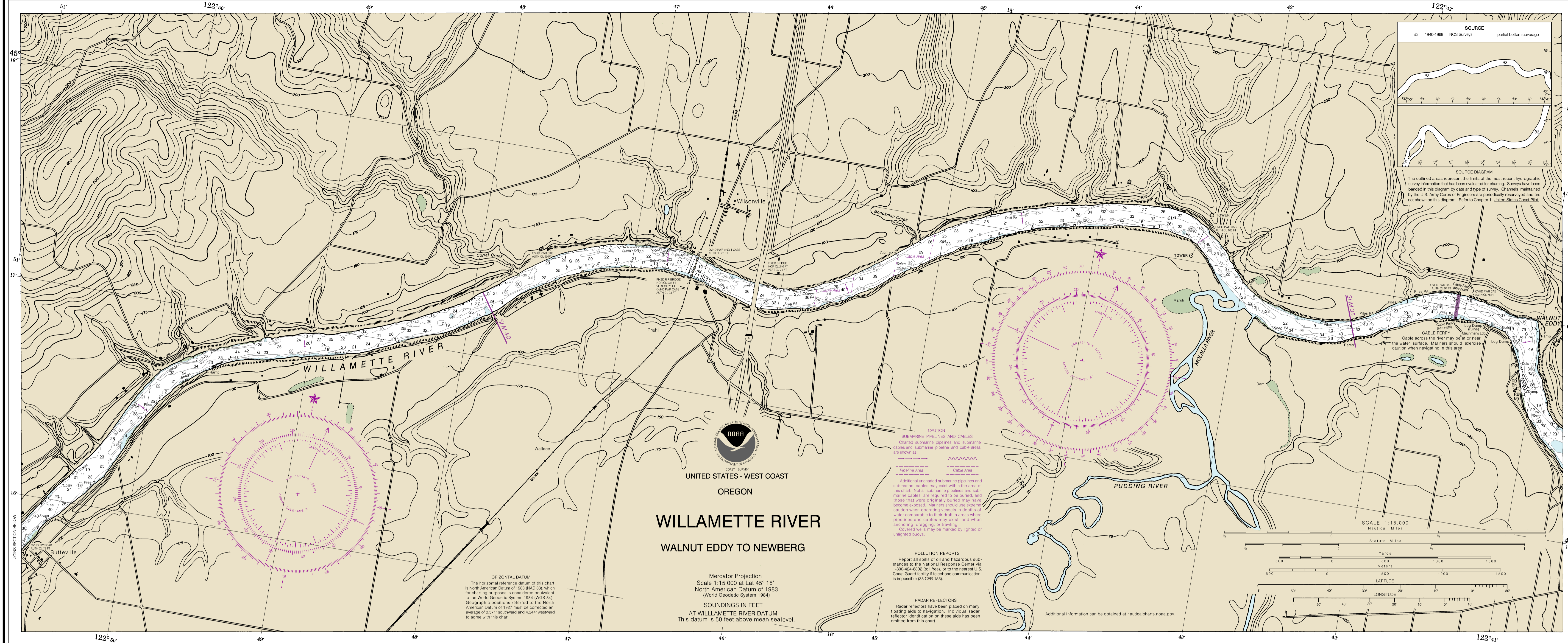


NOAA encourages users to submit inquiries, discrepancies or comments about this chart at <http://www.nauticalcharts.noaa.gov/contactus.htm>

Formerly NOS 18028B, C&DS 8127, 1st Combined Ed., May 1955



This chart has been corrected from the Notice to Mariners (NM) published weekly by the National Geospatial Intelligence Agency and the Local Notice to Mariners (LNM) issued periodically by each U.S. Coast Guard district to the dates shown in the lower left hand corner. Chart updates corrected from Notice to Mariners published after the dates shown in the lower left hand corner are available at nauticalcharts.noaa.gov.

11th Ed., Jun. 2018, Last Correction: 10/4/2021, Cleared through:
LNM: 1222 (2/22/2022), NM: 1522 (4/20/2022), CHS: 0222 (2/25/2022)
To ensure that this chart view printed at the proper scale, the line below should measure six inches (152 millimeters).

CAUTION
The prudent mariner will not rely solely on any single aid to navigation, particularly on floating aids. See U.S. Coast Guard Light List and U.S. Coast Pilot for details.

Published at Washington, D.C.
U.S. DEPARTMENT OF COMMERCE
NATIONAL OCEANIC AND ATMOSPHERIC ADMINISTRATION
NATIONAL OCEAN SERVICE
COAST SURVEY

FATHOMS	1	2	3	4	5	6	7	8	9	10	11	12	13	14	15	16	17
FEET	6	12	18	24	30	36	42	48	54	60	66	72	78	84	90	96	102
METERS	1	2	3	4	5	6	7	8	9	10	11	12	13	14	15	16	17