

**NDAK WEATHER RADIO BROADCASTS**  
The NOAA Weather Radio stations listed below provide continuous weather broadcasts. The reception range is typically 25 to 40 nautical miles from the antenna site, but can be as much as 100 nautical miles for stations at high elevations.  
Portland, OR KOS-36 162.55 MHz  
Salem, OR WOL-36 162.475 MHz  
Astoria, OR WOL-497 162.555 MHz

**CAUTION**  
Limitations on the use of radio signals as aids to marine navigation can be found in the U.S. Coast Guard Light Lists and National Cooperative Intelligence Agency Publication 117. Radio direction-finding bearings to commercial broadcasting stations are subject to error and should be used with caution.  
Station positions are shown thus:  
○ (approximate location)    ● (precise location)

**SUPPLEMENTAL INFORMATION**  
Consult U.S. Coast Pilot 7 for important supplemental information.

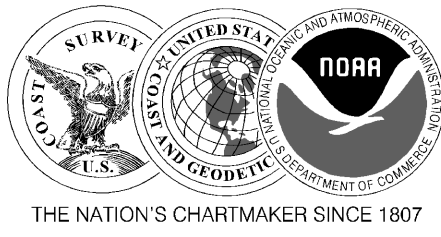
**CAUTION**  
Temporary changes or defects in aids to navigation are not indicated on this chart. See Local Notice to Mariners.

**POLLUTION REPORTS**  
Report all spills of oil and hazardous materials to the National Response Center via 1-800-424-6802, toll free, or to the nearest U.S. Coast Guard facility telephone communication (31 CFR 155).

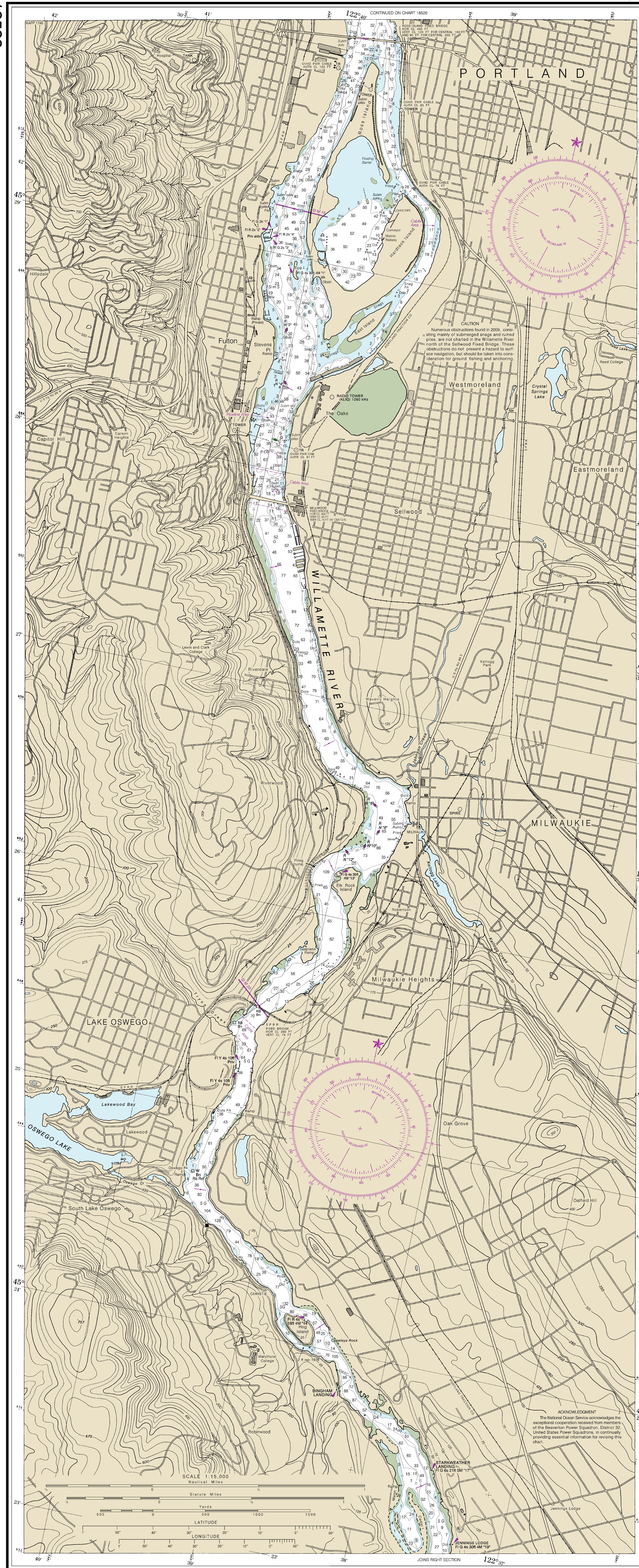
**PLANE COORDINATE GRID**  
(Based on NAD 1983)  
Oregon State Grid north zone is indicated by dashed ticks at 4,000 foot intervals. The last three digits are omitted.

**TIDES**  
The diurnal range of the tide at Portland 45°31' N/122°40' W during lower river stages is 2.4 feet. The range becomes progressively smaller with higher stages of the river. Jul 2008

**Soundings and Clearances of Bridges and Overhead Cables in the Willamette River from Portland to the locks at Oregon City are referred to Columbia River Datum (Mean Lower Low Water During Lower River Stages).**  
Soundings above the locks are referred to Willamette River Datum which is 50 feet above Mean Sea Level.  
Clearance of Bridges and Overhead Cables above the locks are referred to the Corps of Engineers datum for Newberg Pool which is 52 feet above Mean Sea Level.



SOUNDINGS IN FEET



**18528**

This chart has been corrected from the Notice to Mariners (NMA) published weekly by the National Geospatial Intelligence Agency and the local Notice to Mariners (LNM) issued periodically by the U.S. Coast Guard (USCG) to the latest shown in the lower left-hand corner. Chart updates corrected from Notice to Mariners published after the dates shown in the lower left-hand corner are available in reissues/updates only.

11th Ed. Jul. 2008 Last Correction: 10/20/2017 Cleared through:  
11th Ed. 10/20/2017 11th Ed. 10/20/2017 11th Ed. 10/20/2017  
To ensure that this chart was printed at the proper scale, the line below should measure 30 inches (102 millimeters).

UNITED STATES - WEST COAST  
OREGON  
WILLAMETTE RIVER  
PORTLAND TO WALNUT EDDY

Mercator Projection  
Scale 1:15,000 at Lat 45° 23'  
North American Datum of 1983  
World Geodetic System 1984  
SOUNDINGS IN FEET  
For Symbols and Abbreviations see Chart No. 1  
Additional information can be obtained at nauticalcharts.noaa.gov.  
Formerly CGMS 6171, 1st Editioned 61, May 1955 (S-1946-72)

**CAUTION**  
BASQUE BRIDGE CLEARANCES  
For bascule bridges, whose spans do not open to a full upright or vertical position, unlimited vertical clearance is not available for the entire charted horizontal clearance.

**NOTE A**  
Navigation regulations are published in Chapter 2, U.S. Coast Pilot 7. Additions or revisions to Chapter 2 are published in the Notices to Mariners. Information concerning the regulations may be obtained at the Office of the Commander, 13th Coast Guard District in Seattle, Washington, or at the Office of the District Engineer, Corps of Engineers in Portland, Oregon.  
There is a channel regulation section numbers.

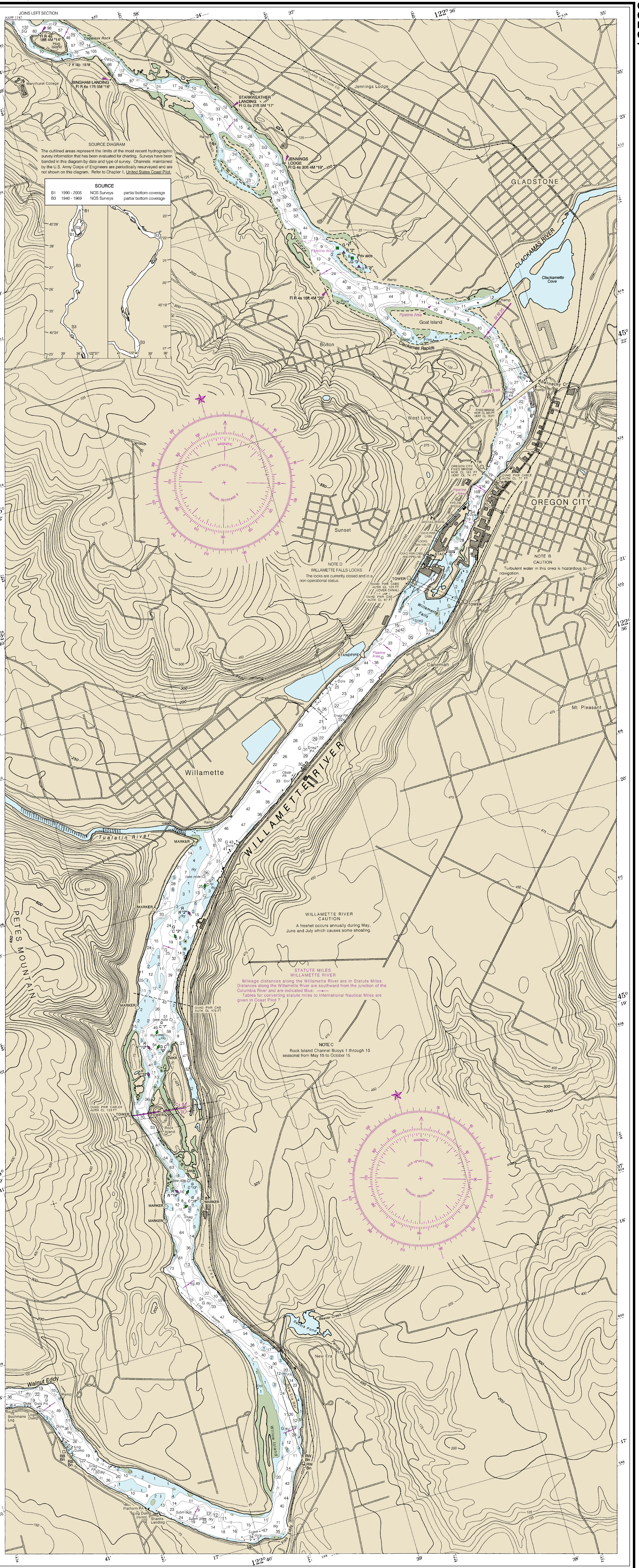
**HORIZONTAL DATUM**  
The horizontal reference datum of this chart is North American Datum of 1983 (NAD 83), which for charting purposes is considered equivalent to the World Geodetic System 1984 (WGS 84). Geographic positions referred to the North American Datum of 1927 must be corrected an average of 0.517' southward and 0.344' westward to agree with this chart.

**HEIGHTS**  
Heights in feet. Contour elevations referred to Mean Sea Level.

**CAUTION**  
Masters are cautioned that a large number of logs and deathheads are adrift in the navigable waters of Oregon and Washington at all times, particularly after storms, spring tides, and unusually high tides.

**NOTES**  
The prudent mariner will not rely solely on any single aid to navigation, particularly on floating aids. See U.S. Coast Guard Light List and U.S. Coast Pilot for details.

**SCALE** 1:15,000  
Nautical Miles  
Statute Miles  
Yards  
1 500 1000 1500  
LATITUDE  
45° 23' 44' 45' 46' 47' 48' 49' 50'  
LONGITUDE  
122° 30' 31' 32' 33' 34' 35' 36' 37' 38' 39' 40' 41' 42' 43' 44' 45' 46' 47' 48' 49' 50'



**18528**

Published at Washington, D.C.  
U.S. DEPARTMENT OF COMMERCE  
NATIONAL OCEANIC AND ATMOSPHERIC ADMINISTRATION  
NATIONAL OCEAN SERVICE  
COAST SURVEY

Willamette River, Portland to Walnut Eddy  
SOUNDINGS IN FEET - SCALE 1:15,000