



For Symbols and Abbreviations see Chart No. 1

POLLUTION REPORTS
Report all spills of oil and hazardous substances to the National Response Center via 1-800-424-8802 (toll free), or to the nearest U.S. Coast Guard facility if telephone communication is impossible (33 CFR 153).

WARNING
The prudent mariner will not rely solely on any single aid to navigation, particularly on floating aids. See U.S. Coast Guard Light List and U.S. Coast Pilot for details.

COLREGS. 80.1385 (see note A)
International Regulations for Preventing Collisions at Sea, 1972.
The entire area of this chart falls seaward of the COLREGS Demarcation Line.

NOAA encourages users to submit inquiries, discrepancies or comments about this chart at <http://www.nauticalcharts.noaa.gov/staff/contact.htm>.

UNITED STATES - WEST COAST
WASHINGTON
NEAH BAY
Mercator Projection
Scale 1:10,000 at Lat 48°23'N
North American Datum of 1983
(World Geodetic System 1984)
SOUNDINGS IN FEET
AT MEAN LOWER LOW WATER
Additional information can be obtained at nauticalcharts.noaa.gov.
Formerly C&GS 6266, 1st Ed., Aug. 1942 KAPP: 1728

TIDAL INFORMATION				
Place	Name	Height referred to datum of soundings (MLLW)	Mean High Water	Mean Low Water
			feet	feet
Neah Bay	(48°22'N/124°37'W)	(1103)	8.0	7.1
			feet	feet

PLANE COORDINATE GRID
(Based on NAD 1927)
Washington State Grid North Zone
is indicated by dotted ticks at 4000 foot intervals.

NOAA WEATHER RADIO BROADCASTS
The NOAA Weather Radio stations listed below provide continuous weather broadcasts. The reception range is typically 20 to 40 nautical miles from the antenna site, but can be as much as 100 nautical miles for stations at high elevations.

Neah Bay, WA KIH-36 162.55 MHz

RADAR REFLECTORS
Radar reflectors have been placed on many floating aids to navigation. Individual radar reflector identification on these aids has been omitted from this chart.

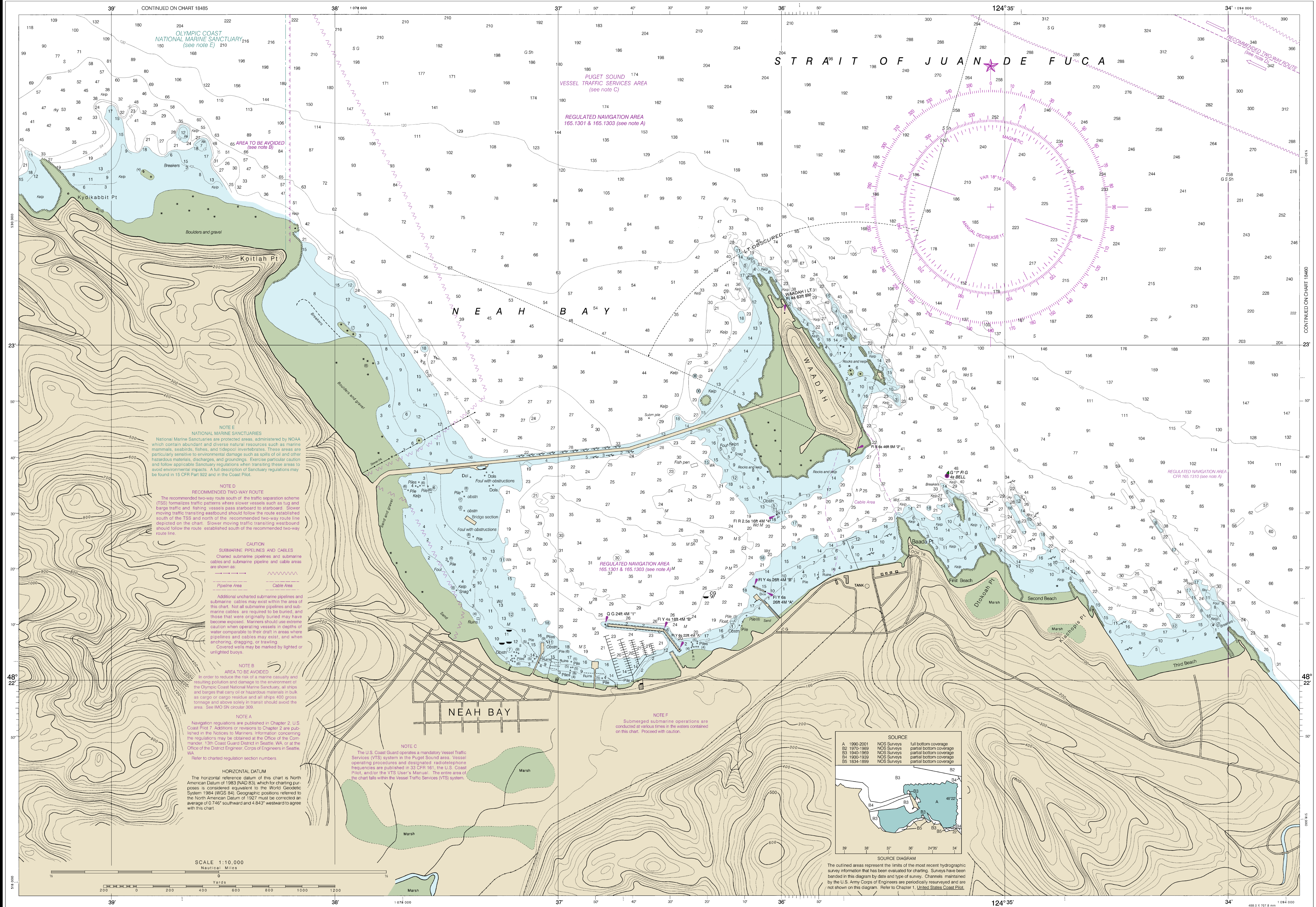
CAUTION
Temporary changes or defects in aids to navigation are not indicated on this chart. See Local Notice to Mariners.

AIDS TO NAVIGATION
Consult U.S. Coast Guard Light List for supplemental information concerning aids to navigation.

SUPPLEMENTAL INFORMATION
Consult U.S. Coast Pilot 7 for important supplemental information.

HEIGHTS
Heights in feet above Mean High Water
AUTHORITIES
Hydrography and topography by the National Ocean Service, Coast Survey, with additional data from the Corps of Engineers and U.S. Coast Guard.

SOUNDINGS IN FEET



18484

CAUTION
This chart has been corrected from the Notice to Mariners (NM) published weekly by the National Geospatial-Intelligence Agency and the Local Notice to Mariners (LNM) issued periodically by each U.S. Coast Guard district to the dates shown in the lower left-hand corner.

SOUNDINGS IN FEET

Published at Washington, D.C.
U.S. DEPARTMENT OF COMMERCE
NATIONAL OCEANIC AND ATMOSPHERIC ADMINISTRATION
NATIONAL OCEAN SERVICE
COAST SURVEY

FATHOMS	1	2	3	4	5	6	7	8	9	10	11	12	13	14	15	16	17	18	19	20
FEET	6	12	18	24	30	36	42	48	54	60	66	72	78	84	90	96	102	108	114	120
METERS	1	2	3	4	5	6	7	8	9	10	11	12	13	14	15	16	17	18	19	20

NEAH BAY
SOUNDINGS IN FEET - SCALE 1:10,000

18484

This is the Last Edition of this chart. It will be cancelled on Jul 2, 2024.
12th Ed., Jun. 2006, Last Correction: 1/22/2024, Cleared through:
LNM 2124 (5/21/2024), NM 2224 (6/1/2024), CHS 0224 (2/23/2024)

If the line does not measure six inches (152 millimeters), this copy is not certified safe for navigation.

(POD) providers fulfill a vessel's requirement to carry a navigational chart "published by the National Ocean Service" in accordance with federal regulations, including but not limited to 33 C.F.R. 164.33(a), 33 C.F.R. 164.72(b), and 46 C.F.R. 28.225(a). POD charts meet stringent print standards and can be recognized by an official certification of authenticity printed on the chart. A list of POD providers can be found at: nauticalcharts.noaa.gov/pod