

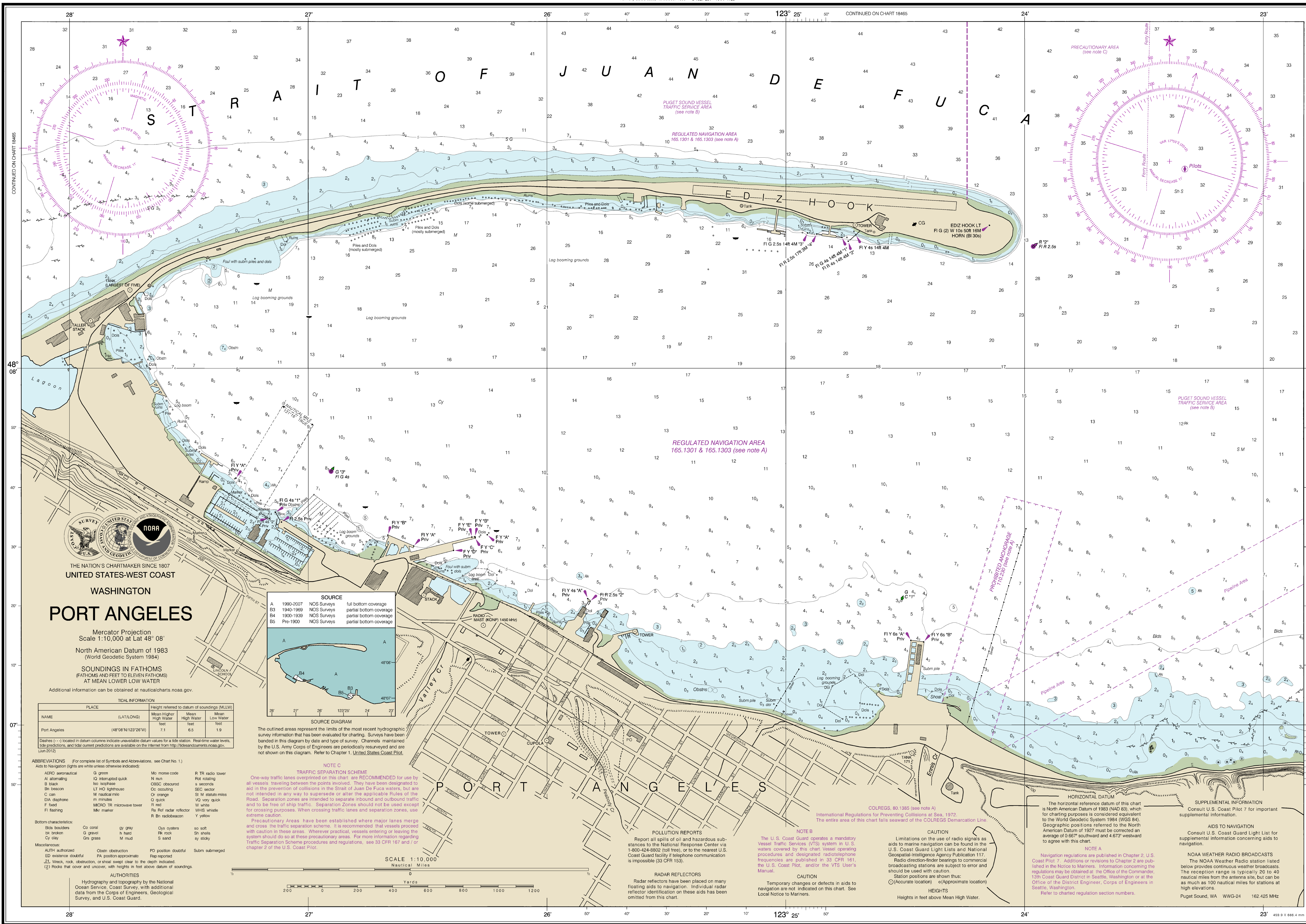
SOUNDINGS IN FATHOMS
(FATHOMS AND FEET TO 11 FATHOMS)

ANCHORING STANDARDS OF CARE
Anchoring Standards of Care have been established for this area through the Harbor Safety Plan. These Standards of Care supplement existing regulations with good marine practices for anchoring, and are separated into different weather categories. If your vessel does not have a copy of the Anchoring Standards of Care, you can download one at http://pshsc.org/about/harbor_safety_plan or contact (206) 443-3830.

NOAA encourages users to submit inquiries, discrepancies or comments about this chart at <http://www.nauticalcharts.noaa.gov/staff/contact.htm>.

Formerly C&GS 6303, 1st Ed., Jul. 1893 C-1927-281 KAPP 1725

LIGHTERING STANDARDS OF CARE
Lightering Standards of Care have been established for this area through the Harbor Safety Plan. These Standards of Care supplement existing regulations with good marine practices for lightering. If your vessel does not have a copy of the Lightering Standards of Care, you can download one at http://pshsc.org/about/harbor_safety_plan or contact (206) 443-3830.



This is the Last Edition of this chart. It will be canceled on Jul 2, 2024
19th Ed., Sep. 2012, Last Correction: 1/22/2024, Cleared through
LNM: 2124 (5/21/2024), NM: 2224 (8/1/2024), CHS: 0224 (2/23/2024)

To ensure that this chart was printed at the proper scale, the line below should measure six inches (152 millimeters).
If the line does not measure six inches (152 millimeters), this copy is not certified safe for navigation.

This chart was distributed as a PDF (Portable Document Format). Printing PDFs may alter
This chart was distributed as a PDF (Portable Document Format). Printing PDFs may alter
charts provided by NOAA certified Print on Demand (POD) providers fulfill a vessel's
requirement to carry a navigational chart "published by the National Ocean Service"
in accordance with federal regulations, including but not limited to 33 C.F.R. 164.33(a),
33 C.F.R. 164.72(b), and 46 C.F.R. 28.225(a). POD charts meet stringent print standards
and can be recognized by an official certification of authenticity printed on the
chart. A list of POD providers can be found at: nauticalcharts.noaa.gov/pod