

UNITED STATES
WASHINGTON - WEST COAST

APPROACHES TO EVERETT

Polyconic Projection
Scale 1:40,000

North American Datum of 1983
(World Geodetic System 1984)

SOUNDINGS IN FATHOMS
(FATHOMS AND FEET TO ELEVEN FATHOMS)
AT MEAN LOWER LOW WATER

Formerly C&GS 6448, 1st Ed., July 1909 V-1909-82 KAPP 1690

Additional information can be obtained at nauticalcharts.noaa.gov.

For Symbols and Abbreviations see Chart No. 1

HEIGHTS

Heights in feet above Mean High Water.

HORIZONTAL DATUM

The horizontal reference datum of this chart is North American Datum of 1983 (NAD 83), which for charting purposes is considered equivalent to the World Geodetic System 1984 (WGS 84). Geographic positions referred to the North American Datum of 1927 must be corrected an average of 0.65" southward and 4.49" westward to agree with this chart.

WARNING

The prudent mariner will not rely solely on any single aid to navigation, particularly on floating aids. See U.S. Coast Guard Light List and U.S. Coast Pilot for details.

AUTHORITIES

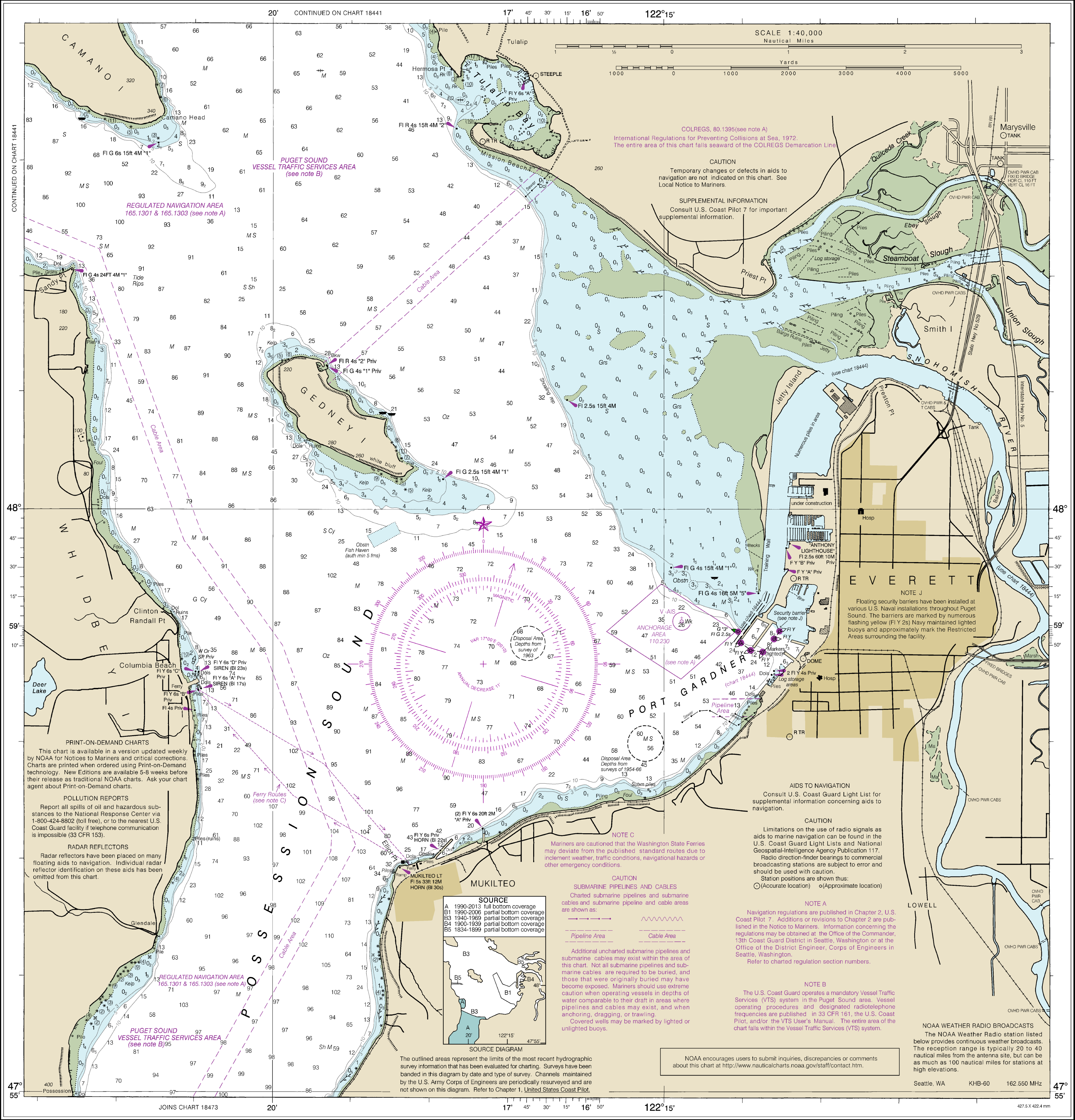
Hydrography and topography by the National Ocean Service, Coast Survey, with additional data from the Corps of Engineers, Geological Survey, and U.S. Coast Guard.

TIDAL INFORMATION				
PLACE	(LAT/LONG)	Height referred to datum of soundings (MLLW)		
		Mean Higher High Water	Mean High Water	Mean Low Water
Everett	(47°59'N/122°13'W)	feet 11.1	feet 10.2	feet 2.8

Dashes (- - -) located in datum columns indicate unavailable datum values for a tide station. Real-time water levels, tide predictions, and tidal current predictions are available on the Internet from <http://tidesandcurrents.noaa.gov>.

SOUNDINGS IN FATHOMS

(FATHOMS AND FEET TO 11 FATHOMS)



18443

18443

SOUNDINGS IN FATHOMS

(FATHOMS AND FEET TO 11 FATHOMS)

17th Ed., Jan. 2010, Last Correction: 12/4/2023. Cleared through:
LNM: 2124 (5/21/2024), NM: 2224 (6/1/2024), CHS: 0224 (2/23/2024)

This chart is canceled. No new editions will be issued.

To ensure that this chart was printed at the proper scale, the line below should measure six inches (152 millimeters).