



North American Datum of 1983
(World Geodetic System 1984)

SOUNDINGS IN FEET
AT MEAN LOWER LOW WATER

UNITED STATES
ALASKA - SOUTH COAST
PRINCE WILLIAM SOUND

ORCA BAY AND INLET

CHANNEL ISLANDS TO CORDOVA

Mercator Projection
Scale 1:30,000
Formerly C&GS 8525, 1st Ed., Jan 1916 KAPP 2610

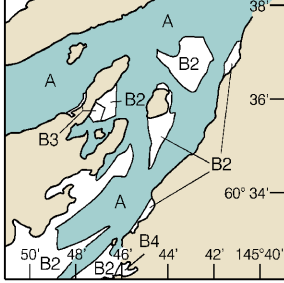
TIDAL INFORMATION

PLACE		Height referred to datum of soundings (MLLW)		
NAME	(LAT/LONG)	Mean Higher High Water	Mean High Water	Mean Low Water
		feet	feet	feet
Cordova	(60°34'N/145°45'W)	12.6	11.7	1.5

Dashes (---) located in datum columns indicate unavailable datum values for a tide station. Real-time water levels, tide predictions, and tidal current predictions are available on the Internet from <http://tidesandcurrents.noaa.gov>. (Sep 2010)

SOUNDINGS IN FEET

SOURCE			
A	1990 - 2005	NOS Surveys	full bottom coverage
B2	1970 - 1989	NOS Surveys	partial bottom coverage
B3	1940 - 1969	NOS Surveys	partial bottom coverage
B4	1900 - 1939	NOS Surveys	partial bottom coverage



SOURCE DIAGRAM

The outlined areas represent the limits of the most recent hydrographic survey information that has been evaluated for charting. Surveys have been banded in this diagram by date and type of survey. Channels maintained by the U.S. Army Corps of Engineers are periodically resurveyed and are not shown on this diagram. Refer to Chapter 1, United States Coast Pilot.

CAUTION

This chart has been corrected from the Notice to Mariners (NM) published weekly by the National Geospatial-Intelligence Agency and the Local Notice to Mariners (LNM) issued periodically by each U.S. Coast Guard district to the dates shown in the lower left hand corner. Chart updates corrected from Notice to Mariners published after the dates shown in the lower left hand corner are available at nauticalcharts.noaa.gov.

For Symbols and Abbreviations see Chart No. 1

HEIGHTS

Heights in feet above Mean High Water.

AUTHORITIES

Hydrography and topography by the National Ocean Service, Coast Survey, with additional data from the Corps of Engineers, and U.S. Coast Guard.

Additional information can be obtained at nauticalcharts.noaa.gov.

CAUTION

SUBMARINE PIPELINES AND CABLES

Charted submarine pipelines and submarine cables and submarine pipeline and cable areas are shown as:



Additional uncharted submarine pipelines and submarine cables may exist within the area of this chart. Not all submarine pipelines and submarine cables are required to be buried, and those that were originally buried may have become exposed. Mariners should use extreme caution when operating vessels in depths of water comparable to their draft in areas where pipelines and cables may exist, and when anchoring, dragging, or trawling. Covered wells may be marked by lighted or unlighted buoys.

HORIZONTAL DATUM

The horizontal reference datum of this chart is North American Datum of 1983 (NAD 83), which for charting purposes is considered equivalent to the World Geodetic System 1984 (WGS 84). Geographic positions referred to the North American Datum of 1927 must be corrected an average of 1.988' southward and 7.013' westward to agree with this chart.

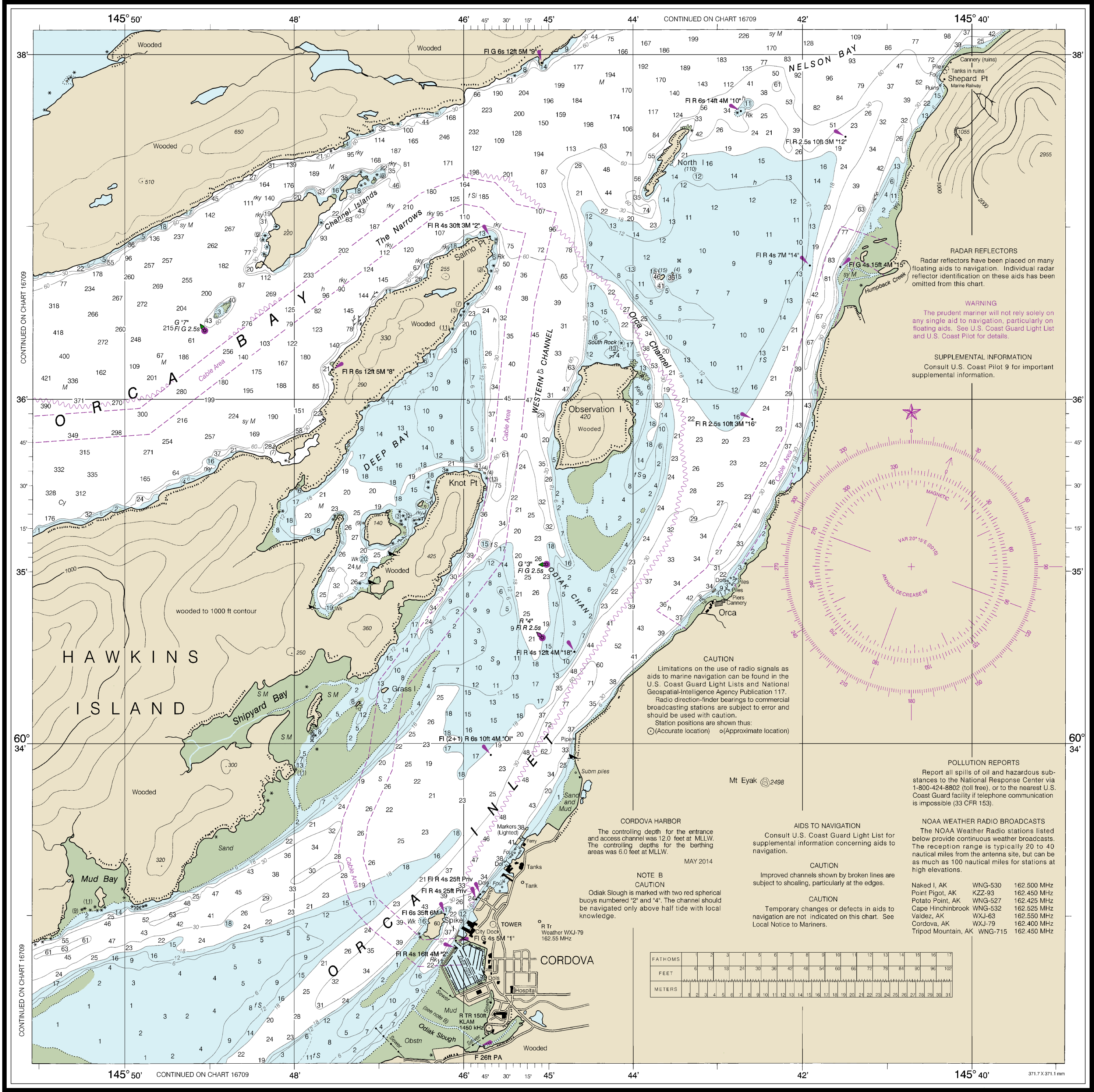
NOTE A

Navigation regulations are published in Chapter 2, U.S. Coast Pilot 9. Additions or revisions to Chapter 2 are published in the Notice to Mariners. Information concerning the regulations may be obtained at the Office of the Commander, 17th Coast Guard District in Juneau, Alaska, or at the Office of the District Engineer, Corps of Engineers in Anchorage, Alaska. Refer to charted regulation section numbers.

COLREGS, 80.1705 (see note A)

International Regulations for Preventing Collisions at Sea, 1972. The entire area of this chart falls seaward of the COLREGS Demarcation Line.

NOAA encourages users to submit inquiries, discrepancies or comments about this chart at <http://www.nauticalcharts.noaa.gov/staff/contact.htm>.



RADAR REFLECTORS
Radar reflectors have been placed on many floating aids to navigation, particularly on floating aids. Individual radar reflector identification on these aids has been omitted from this chart.

WARNING
The prudent mariner will not rely solely on any single aid to navigation, particularly on floating aids. See U.S. Coast Guard Light List and U.S. Coast Pilot for details.

SUPPLEMENTAL INFORMATION
Consult U.S. Coast Pilot 9 for important supplemental information.

AIDS TO NAVIGATION
Consult U.S. Coast Guard Light List for supplemental information concerning aids to navigation.

CAUTION
Improved channels shown by broken lines are subject to shoaling, particularly at the edges.

CAUTION
Temporary changes or defects in aids to navigation are not indicated on this chart. See Local Notice to Mariners.

FATHOMS	1	2	3	4	5	6	7	8	9	10	11	12	13	14	15	16	17
FEET	6	12	18	24	30	36	42	48	54	60	66	72	78	84	90	96	102
METERS	1	2	3	4	5	6	7	8	9	10	11	12	13	14	15	16	17

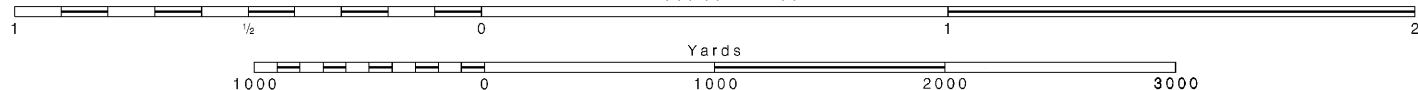
POLLUTION REPORTS
Report all spills of oil and hazardous substances to the National Response Center via 1-800-424-8802 (toll free), or to the nearest U.S. Coast Guard facility if telephone communication is impossible (33 CFR 153).

NOAA WEATHER RADIO BROADCASTS
The NOAA Weather Radio stations listed below provide continuous weather broadcasts. The reception range is typically 20 to 40 nautical miles from the antenna site, but can be as much as 100 nautical miles for stations at high elevations.

Naked I, AK	WNG-530	162.500 MHz
Point Pigot, AK	KZZ-93	162.450 MHz
Potato Point, AK	WNG-527	162.425 MHz
Cape Hinchinbrook, AK	WNG-532	162.525 MHz
Valdez, AK	WXJ-63	162.550 MHz
Cordova, AK	WXJ-79	162.400 MHz
Tripod Mountain, AK	WNG-715	162.450 MHz

Published at Washington, D.C.
U.S. DEPARTMENT OF COMMERCE
NATIONAL OCEANIC AND ATMOSPHERIC ADMINISTRATION
NATIONAL OCEAN SERVICE
COAST SURVEY

SCALE 1:30,000
Nautical Miles



This is the Last Edition of this chart. It will be canceled on Nov 1, 2023
18th Ed., Nov. 2010. Last Correction: 5/2/2023. Cleared through:
LNM: 4223 (10/17/2023), NM: 4323 (10/28/2023), CHS: 0923 (9/29/2023)

This chart was distributed as a PDF (Portable Document Format). Printing PDFs may alter This chart was distributed as a PDF (Portable Document Format). Printing PDFs may alter charts provided by NOAA certified Print on Demand (POD) providers fulfill a vessel's requirement to carry a navigational chart "published by the National Ocean Service" in accordance with federal regulations, including but not limited to 33 C.F.R. 164.33(a), 33 C.F.R. 164.72(b), and 46 C.F.R. 28.225(a). POD charts meet stringent print standards and can be recognized by an official certification of authenticity printed on the chart. A list of POD providers can be found at: nauticalcharts.noaa.gov/pod

To ensure that this chart was printed at the proper scale, the line below should measure six inches (152 millimeters).
If the line does not measure six inches (152 millimeters), this copy is not certified safe for navigation.