

BookletChart™

Penobscot Bay and Approaches

NOAA Chart 13302

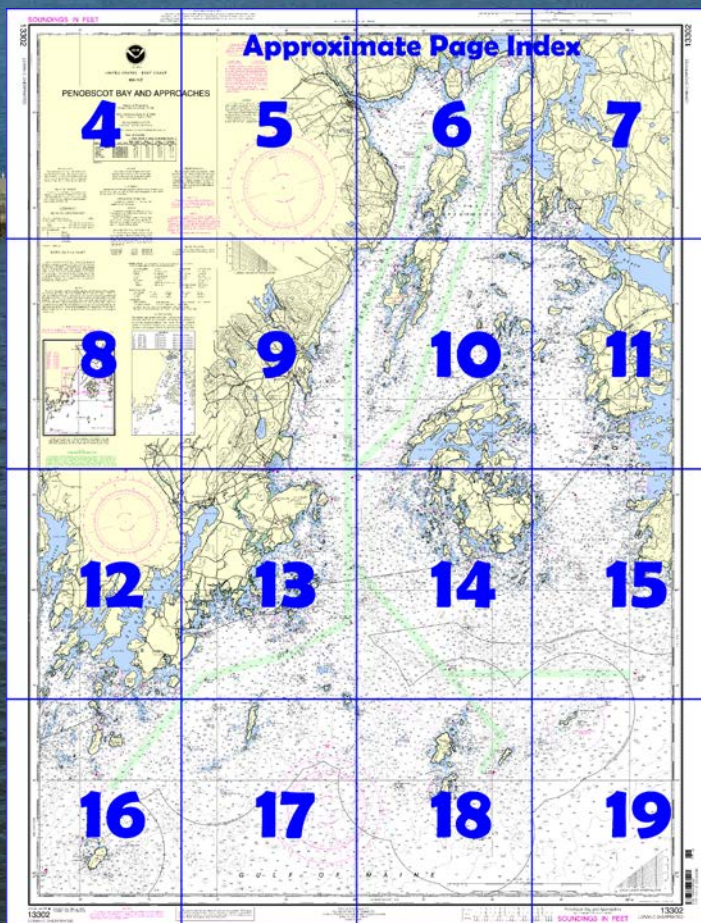


A reduced-scale NOAA nautical chart for small boaters

When possible, use the full-size NOAA chart for navigation.



- Complete, reduced-scale nautical chart
- Print at home for free
- Convenient size
- Up-to-date with Notices to Mariners
- Compiled by NOAA's Office of Coast Survey, the nation's chartmaker



**Published by the
National Oceanic and Atmospheric Administration
National Ocean Service
Office of Coast Survey
www.NauticalCharts.NOAA.gov
888-990-NOAA**

What are Nautical Charts?

Nautical charts are a fundamental tool of marine navigation. They show water depths, obstructions, buoys, other aids to navigation, and much more. The information is shown in a way that promotes safe and efficient navigation. Chart carriage is mandatory on the commercial ships that carry America's commerce. They are also used on every Navy and Coast Guard ship, fishing and passenger vessels, and are widely carried by recreational boaters.

What is a BookletChart™?

This BookletChart is made to help recreational boaters locate themselves on the water. It has been reduced in scale for convenience, but otherwise contains all the information of the full-scale nautical chart. The bar scales have also been reduced, and are accurate when used to measure distances in this BookletChart. See the Note at the bottom of page 5 for the reduction in scale applied to this chart.

Whenever possible, use the official, full scale NOAA nautical chart for navigation. Nautical chart sales agents are listed on the Internet at <http://www.NauticalCharts.NOAA.gov>.

This BookletChart does NOT fulfill chart carriage requirements for regulated commercial vessels under Titles 33 and 44 of the Code of Federal Regulations.

Notice to Mariners Correction Status

This BookletChart has been updated for chart corrections published in the U.S. Coast Guard Local Notice to Mariners, the National Geospatial Intelligence Agency Weekly Notice to Mariners, and, where applicable, the Canadian Coast Guard Notice to Mariners. Additional chart corrections have been made by NOAA in advance of their publication in a Notice to Mariners. The last Notices to Mariners applied to this chart are listed in the Note at the bottom of page 7. Coast Pilot excerpts are not being corrected.

For latest Coast Pilot excerpt visit the Office of Coast Survey website at <http://www.nauticalcharts.noaa.gov/nsd/searchbychart.php?chart=13302>.



(Selected Excerpts from Coast Pilot)

Penobscot Bay, the largest and most important of the many indentations on the coast of Maine, is about 20 miles wide from Isle au Haut on the east to Whitehead Island on the west and 28 miles long from its entrance to the mouth of Penobscot River. A chain of large and small islands divides the bay into two parts, **East Penobscot Bay** and **West Penobscot Bay**. The southern part of East Penobscot Bay is Isle au Haut Bay.

Vinalhaven Island and **North Haven Island** are large islands dividing the southern part of the bay. Islesboro Island divides the bay near its head. Numerous harbors indent the shores of Penobscot Bay, the most important being Rockland, Rockport, Camden, Belfast, and Searsport on

the western shore; Castine and Stonington on the eastern shore; and Vinalhaven and North Haven in the center of the bay. The bay is the approach to Penobscot River, on which are several towns and the city of Bangor at the head of navigation. The bay ports collectively are among the leaders for the lobstering industry in Maine.

The sea approaches to the bay are well marked by the lights on Monhegan Island and Matinicus Rock; the entrance is marked by Saddleback Ledge Light on the east and by Whitehead and Two Bush Island Lights on the west side of the bay. The harbors are well lighted, and the more important dangers are marked by buoys or daybeacons. Deep-draft vessels ply the bay throughout the year and recreational vessels are prevalent during the summer. In severe winters many of the harbors are obstructed by ice. The Penobscot River seldom is entirely closed by it as icebreakers usually keep the channel free. The thorofares are only occasionally obstructed by ice and are much used by small vessels bound along the coast.

Penobscot Bay, a region of rocks and ledges, requires extreme caution in navigating. After unusually high tides many logs are present in the bay, particularly from Belfast northward. These logs are dangerous to small craft. Penobscot Bay can be entered from eastward through Eggemoggin Reach, Deer Island Thorofare, or Merchant Row, and from westward through Muscle Ridge Channel or Two Bush Channel.

Large vessels approaching Penobscot Bay from southward, either from Boston, Cape Cod Canal, or from eastward of Cape Cod, usually make Cape Ann Lighted Whistle Buoy 2 (42°37.9'N., 70°31.2'W.), chart 13260, then shape the course for Manana Island Lighted Whistle Buoy 14M (43°45.3'N., 69°22.5'W.), and then enter through Two Bush or Muscle Ridge Channels. Two Bush Channel is used by most vessels and tows, and by all except small local vessels when the visibility is not good. Muscle Ridge Channel has good water, and most of the dangers are marked, but it is narrow in places and has a number of unmarked 16- to 22-foot spots near the track. It is not recommended for deep-draft vessels.

The preceding paragraphs give the simplest directions by pointing out the difficulties and the dangers, and especially, when necessary, the need for local knowledge. The channels are well buoyed, most of the dangers well marked, and the approaches clear. No difficulty should be experienced in approaching and entering the bay in clear weather with the aid of the chart and by following the aids.

Two vessel-to-vessel **oil transfer anchorage areas** near the head of Penobscot Bay north of Islesboro Island are discussed later in this chapter; indexed as Oil Transfer Anchorage Area.

The U.S. Coast Guard Captain of the Port, Sector Northern New England, in cooperation with the Maine and New Hampshire Port Safety Forum, has established a Recommended Vessel Route for deep draft vessels entering and departing Penobscot Bay and River. Deep draft vessels are requested to follow the designated routes. These routes were designed to provide safe, established routes for increased deep draft vessels, to prevent the loss of fishing gear placed in the waters in the approaches to Penobscot Bay and River, and to reduce the potential for conflicts between less maneuverable deep draft commercial vessels and all other vessels navigating these waters. Vessels are responsible for their own safety and are not required to remain inside the route nor are fisherman required to keep fishing gear outside of the 0.4 mile wide route.

The **Penobscot Bay and River Closed Area**, a Marine Protected Area, includes all bays, inlets and harbors within Penobscot Bay and River.

**U.S. Coast Guard Rescue Coordination Center
24 hour Regional Contact for Emergencies**

RCC Boston

Commander
1st CG District
Boston, MA

(617) 223-8555

Navigation Manager Regions



To make suggestions, ask questions, or report a problem with a chart, go to <https://www.nauticalcharts.noaa.gov/customer-service/assist/>

Lateral System As Seen Entering From Seaward

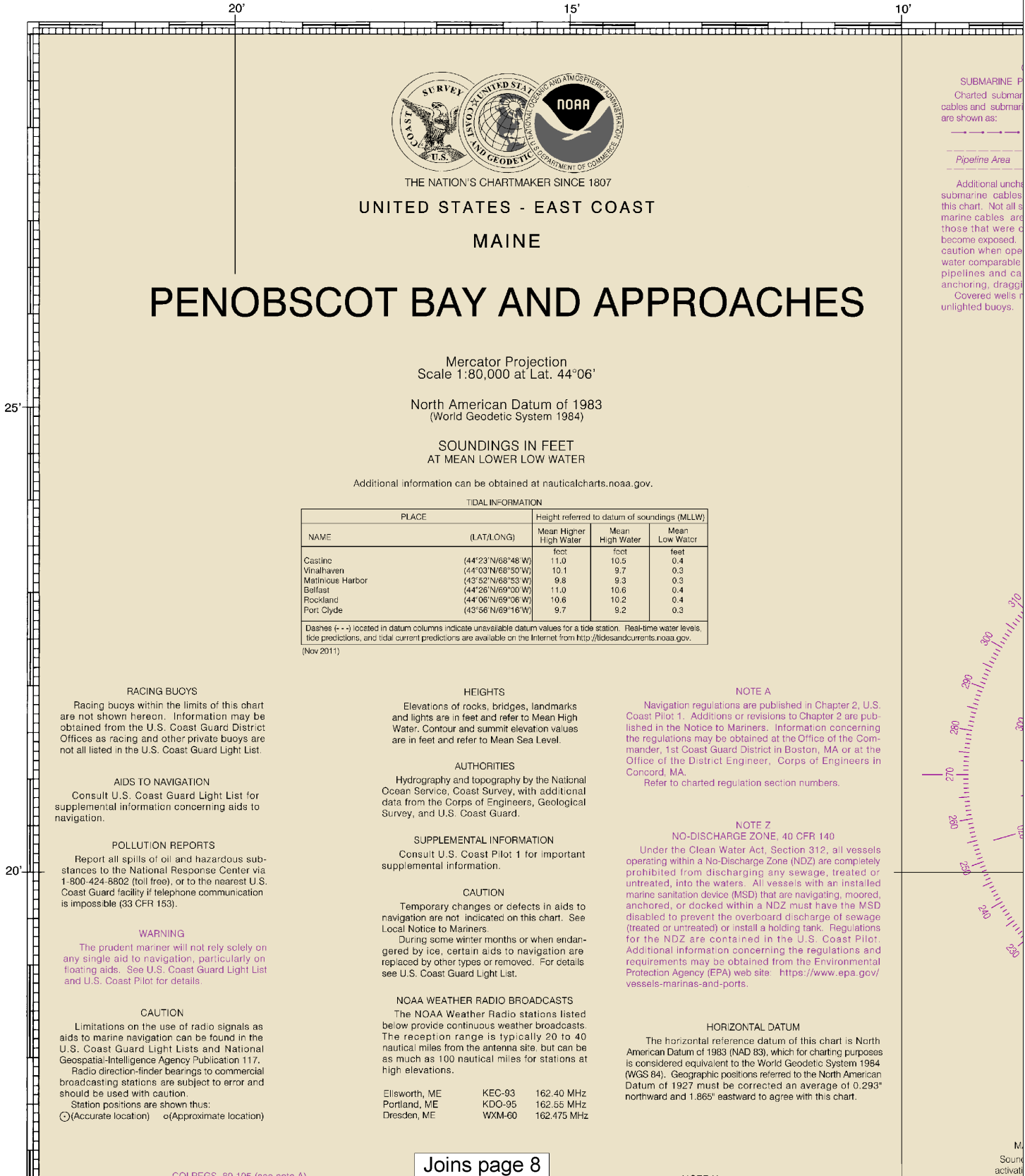
on navigable waters except Western Rivers



For more information on aids to navigation, including those on Western Rivers, please consult the latest USCG Light List for your area. These volumes are available online at <http://www.navcen.uscg.gov>

SOUNDINGS IN FEET

13302



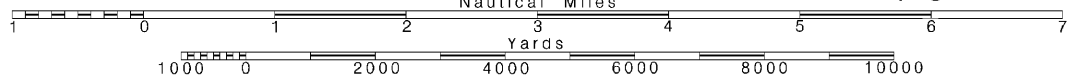
4

Note: Chart grid lines are aligned with true north.

Printed at reduced scale.

SCALE 1:80,000
Nautical Miles

See Note on page 5.

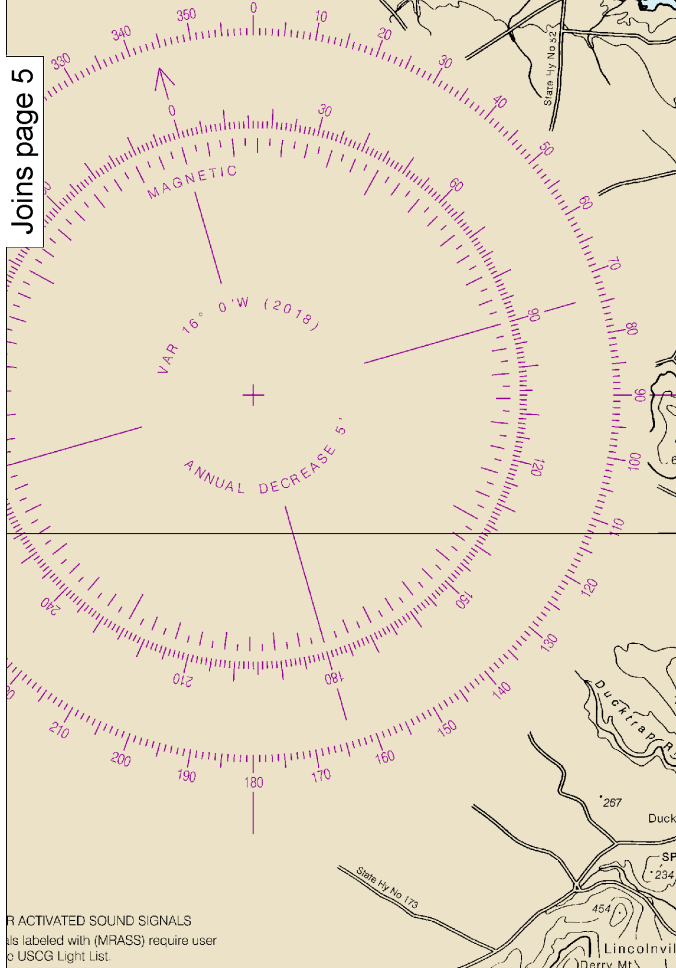


ON
ES AND CABLES
elines and submarine
eline and cable areas

Cable Area

ubmarine pipelines and
exist within the area of
the pipelines and sub-
rred to be buried, and
sly buried may have
rs should use extreme
vessels in depths of
r draft in areas where
may exist, and when
trawling,
marked by lighted or

Joins page 5

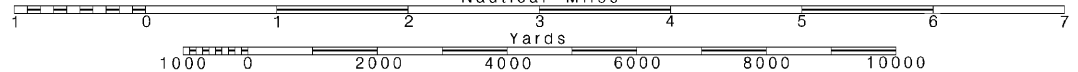


Joins page 10

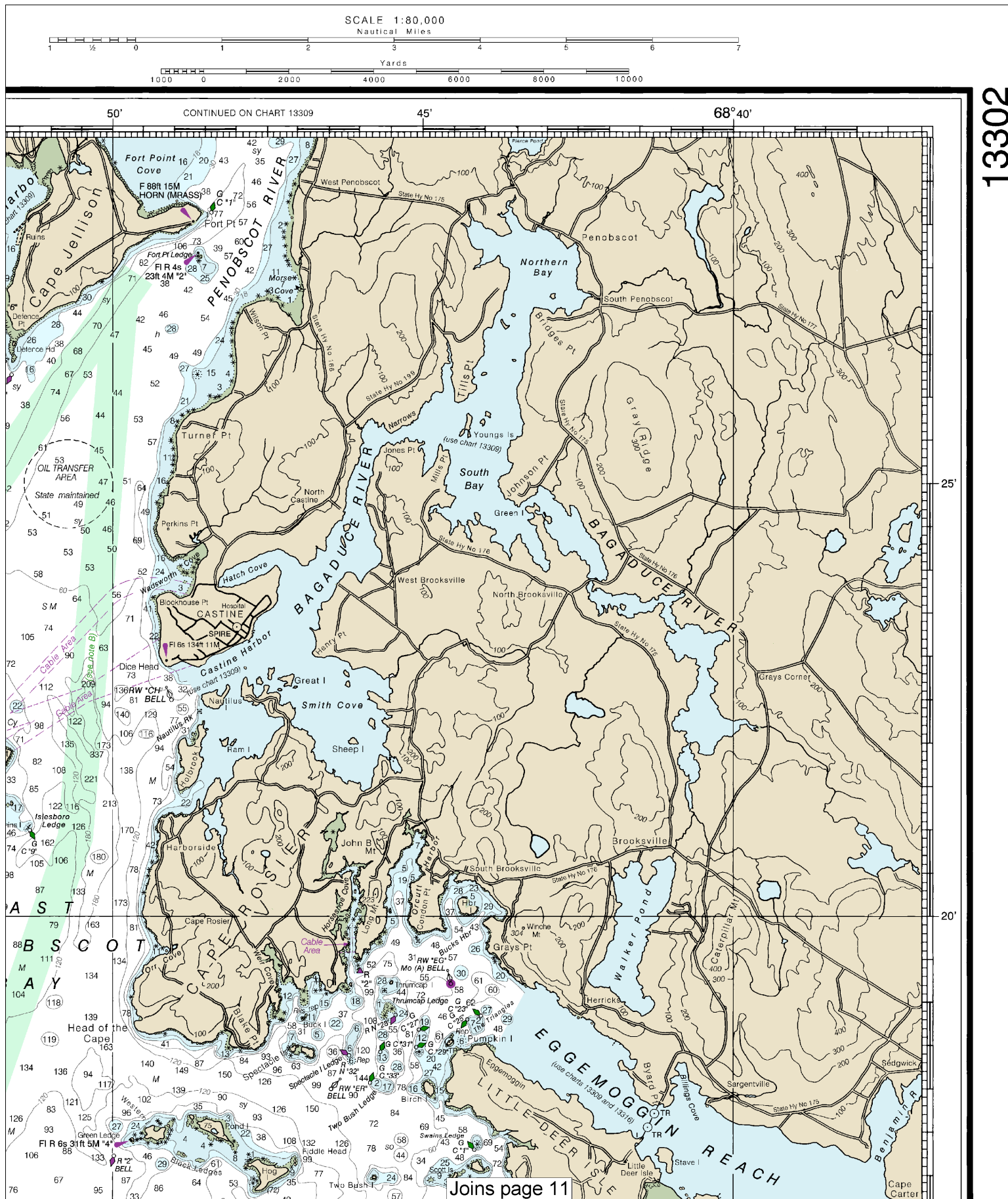
Printed at reduced scale.

SCALE 1:80,000
Nautical Miles

See Note on page 5.



Note: Chart grid
lines are aligned
with true north.



This is the Last Edition of this chart. It will be canceled on Nov 29, 2023
25th Ed. Apr. 2019. Last Correction: 7/19/2023. Cleared through:
LNM: 4223 (10/17/2023), NM: 4323 (10/28/2023), CHS: 0923 (9/29/2023)

13302

7

floating aids. See U.S. Coast Guard Light List and U.S. Coast Pilot for details.

see U.S.

Joins page 4

Protection Agency (EPA) web site: <https://www.epa.gov/vessels-marinas-and-ports>.

CAUTION

Limitations on the use of radio signals as aids to marine navigation can be found in the U.S. Coast Guard Light Lists and National Geospatial-Intelligence Agency Publication 117.

Radio direction-finder bearings to commercial broadcasting stations are subject to error and should be used with caution.

Station positions are shown thus:

○ (Accurate location) ◐ (Approximate location)

NOAA WEATHER RADIO BROADCASTS

The NOAA Weather Radio stations listed below provide continuous weather broadcasts. The reception range is typically 20 to 40 nautical miles from the antenna site, but can be as much as 100 nautical miles for stations at high elevations.

Ellsworth, ME	KEC-93	162.40 MHz
Portland, ME	KDO-95	162.55 MHz
Dresden, ME	WXM-60	162.475 MHz

HORIZONTAL DATUM

The horizontal reference datum of this chart is North American Datum of 1983 (NAD 83), which for charting purposes is considered equivalent to the World Geodetic System 1984 (WGS 84). Geographic positions referred to the North American Datum of 1927 must be corrected an average of 0.293" northward and 1.865" eastward to agree with this chart.

COLREGS, 80.105 (see note A)

International Regulations for Preventing Collisions at Sea, 1972.

The entire area of this chart falls seaward of the COLREGS Demarcation Line.

ABBREVIATIONS (For complete list of Symbols and Abbreviations, see Chart No. 1.)

Aids to Navigation (lights are white unless otherwise indicated):

AERO aeronautical	G green	Mo morse code	R TR radio tower
Al alternating	IQ interrupted quick	N run	Rot rotating
B black	Is isophase	OBSC obscured	s seconds
Bn beacon	LT HO lighthouse	OC occulting	SEC sector
C can	M nautical mile	Or orange	St M statute miles
DIA diaphone	m minutes	Q quick	VQ very quick
F fixed	MICRO TR microwave tower	R red	W white
Fl flashing	Mkr marker	Ra Ref radar reflector	WHIS whistle
		R Bn radiobeacon	Y yellow

Bottom characteristics:

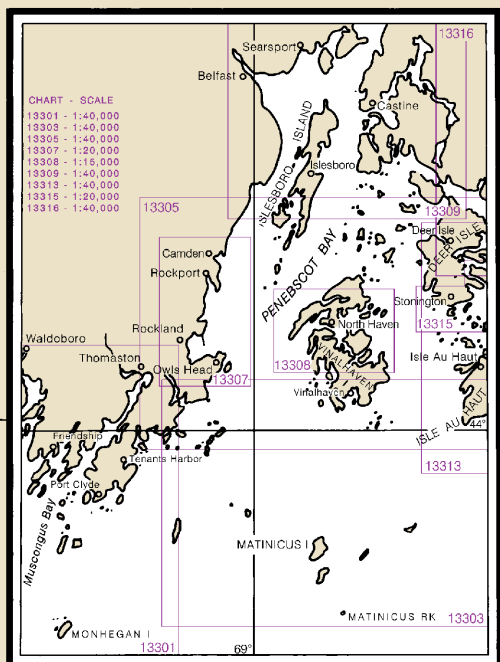
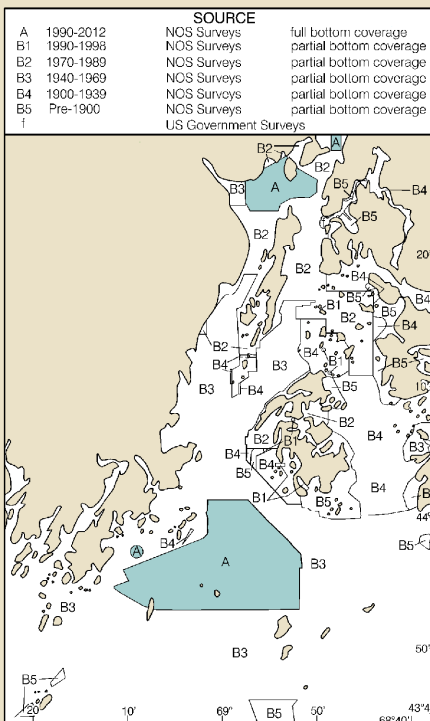
Bds boulders	Co coral	gy gray	Oys oysters	so soft
bk broken	G gravel	h hard	Rk rock	Sh shells
Cy clay	Grs grass	M mud	S sand	sy sticky

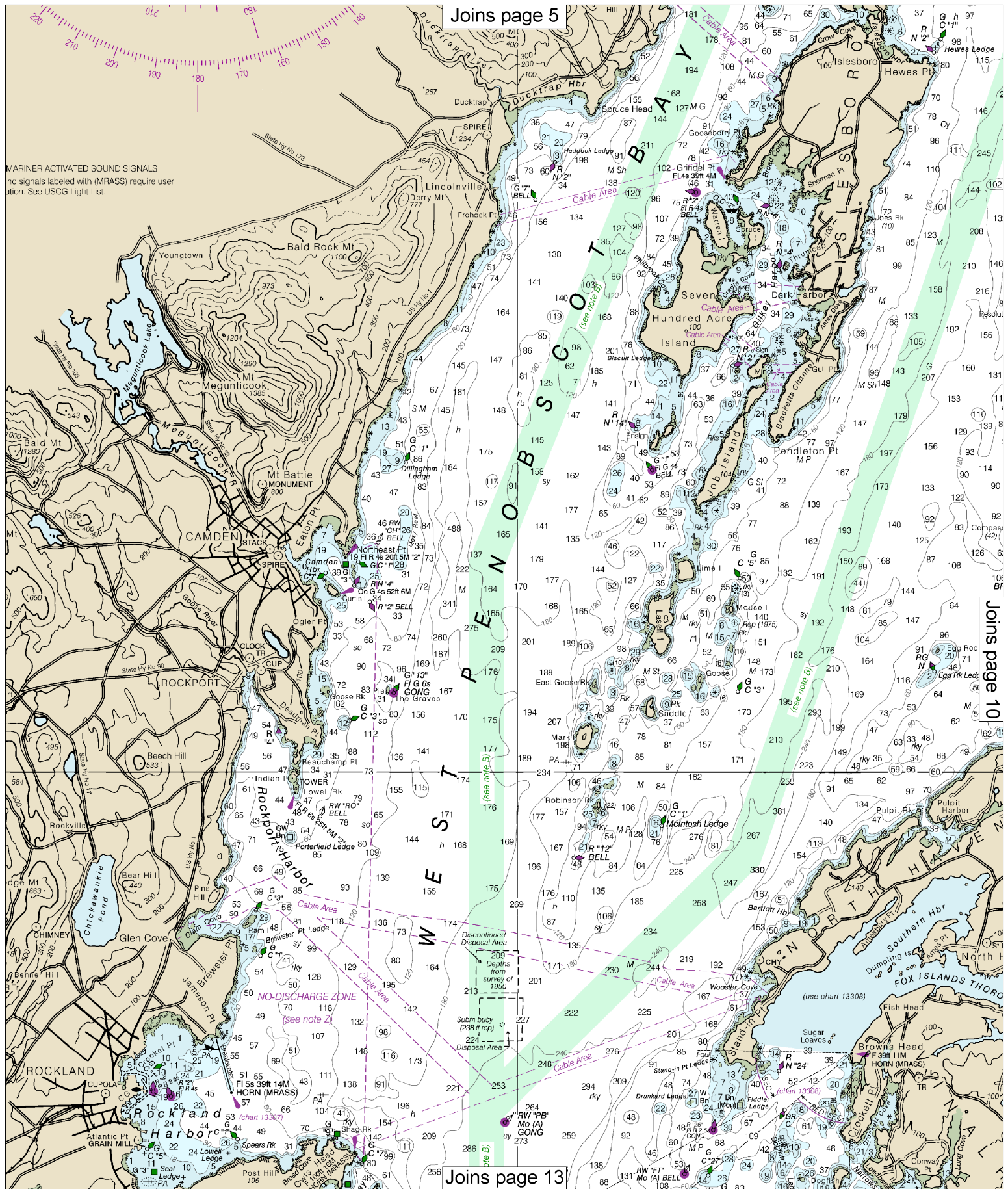
Miscellaneous:

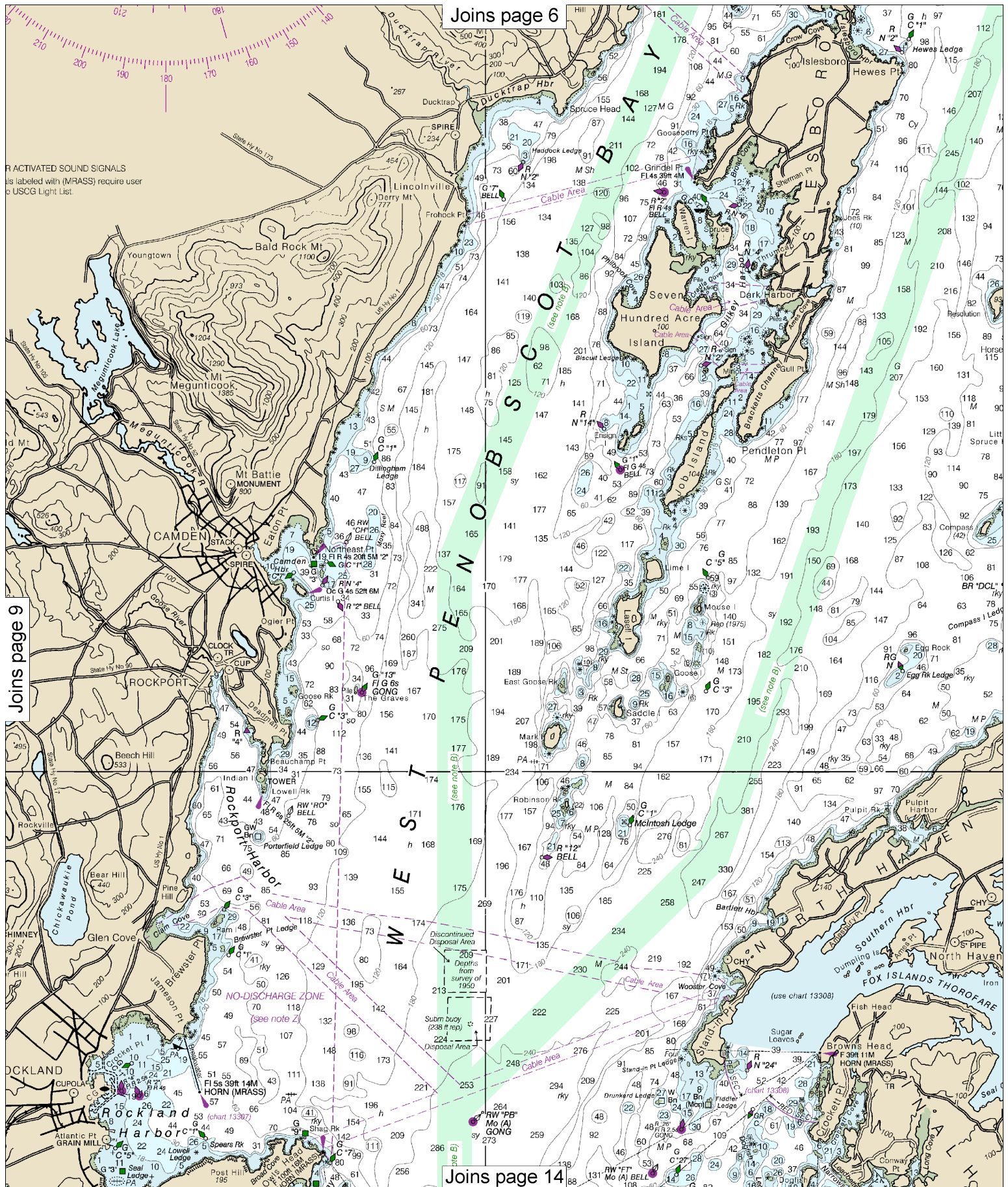
AUTH authorized	Ocstrn obstruction	PD position doubtful	Subm submerged
ED existence doubtful	PA position approximate	Rep reported	
(2) Wreck, rock, obstruction, or shoal swept clear to the depth indicated.			
(2) Rocks that cover and uncover, with heights in feet above datum of soundings.			

SOURCE DIAGRAM

The outlined areas represent the limits of the most recent hydrographic survey information that has been evaluated for charting. Surveys have been banded in this diagram by date and type of survey. Channels maintained by the U.S. Army Corps of Engineers are periodically resurveyed and are not shown on this diagram. Refer to Chapter 1, *United States Coast Pilot*.

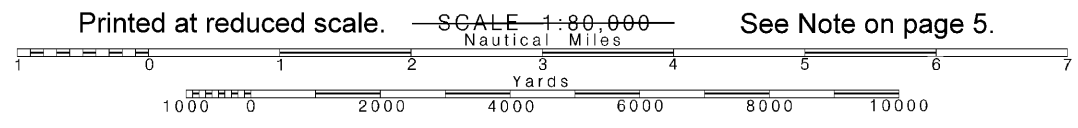


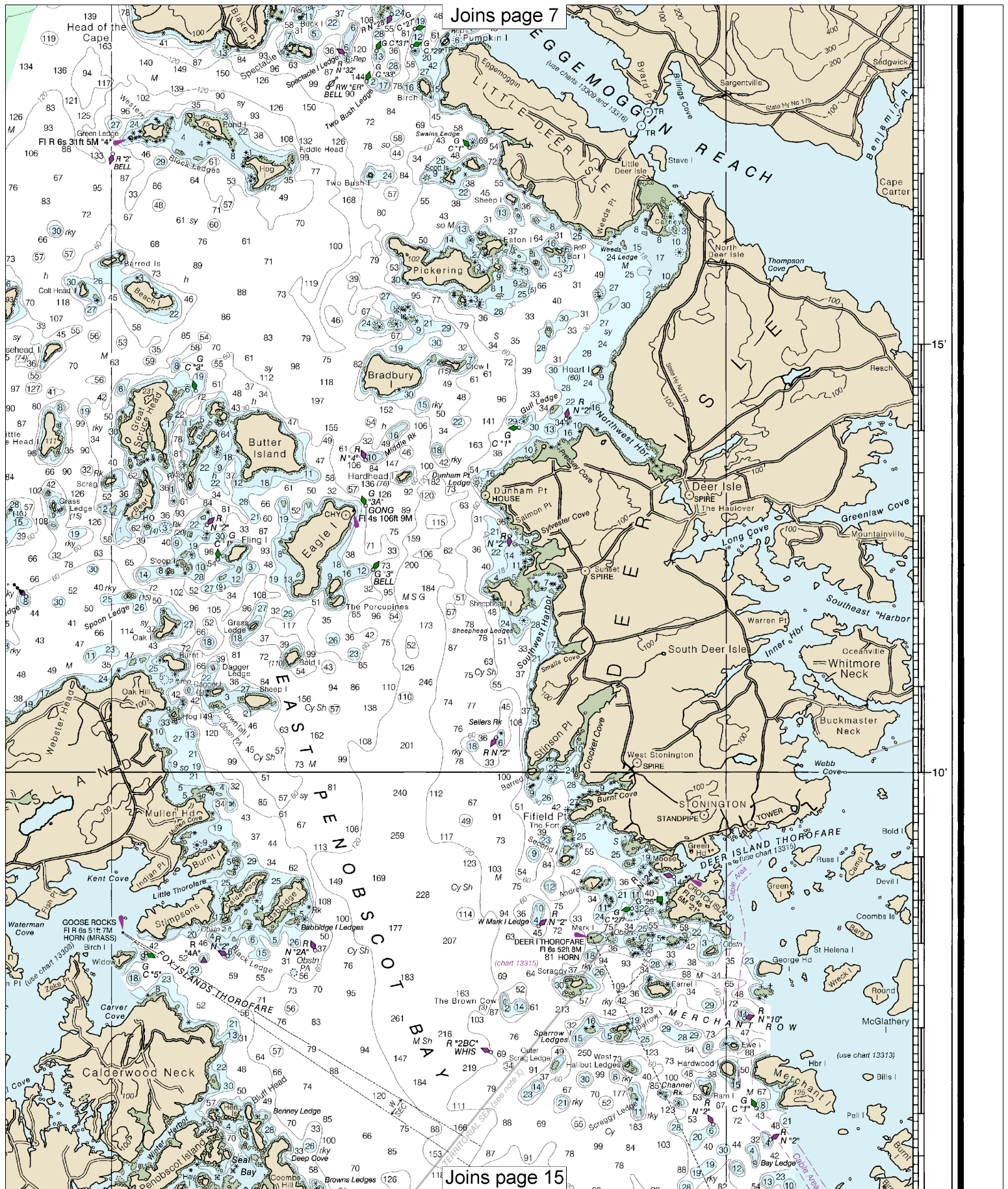




10

Note: Chart grid lines are aligned with true north.

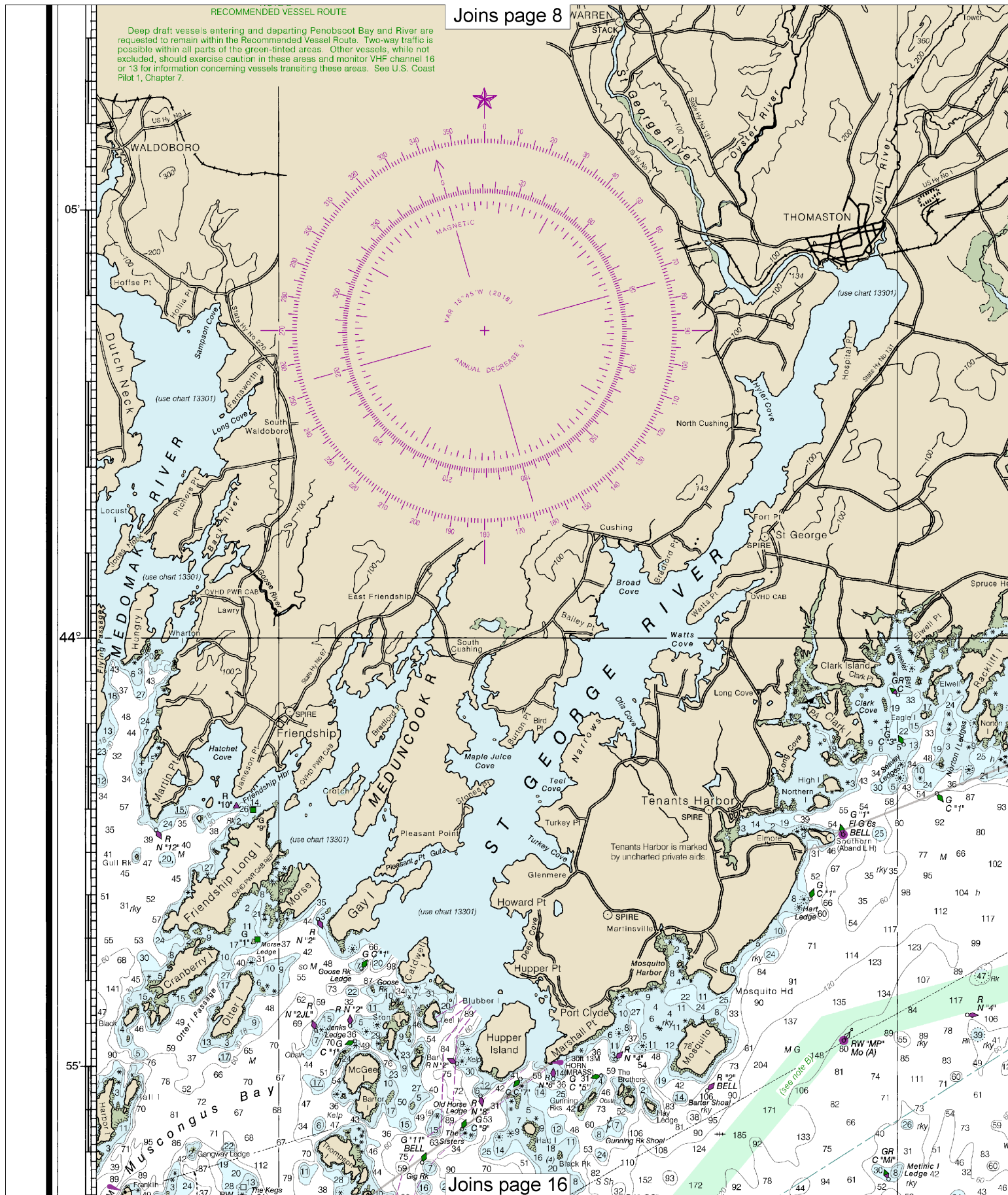




RECOMMENDED VESSEL ROUTE

Deep draft vessels entering and departing Penobscot Bay and River are requested to remain within the Recommended Vessel Route. Two-way traffic is possible within all parts of the green-tinted areas. Other vessels, while not excluded, should exercise caution in these areas and monitor VHF channel 16 or 13 for information concerning vessels transiting these areas. See U.S. Coast Pilot 1, Chapter 7.

Joins page 8



Joins page 16

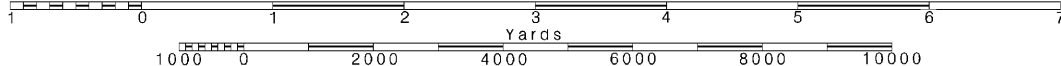
12

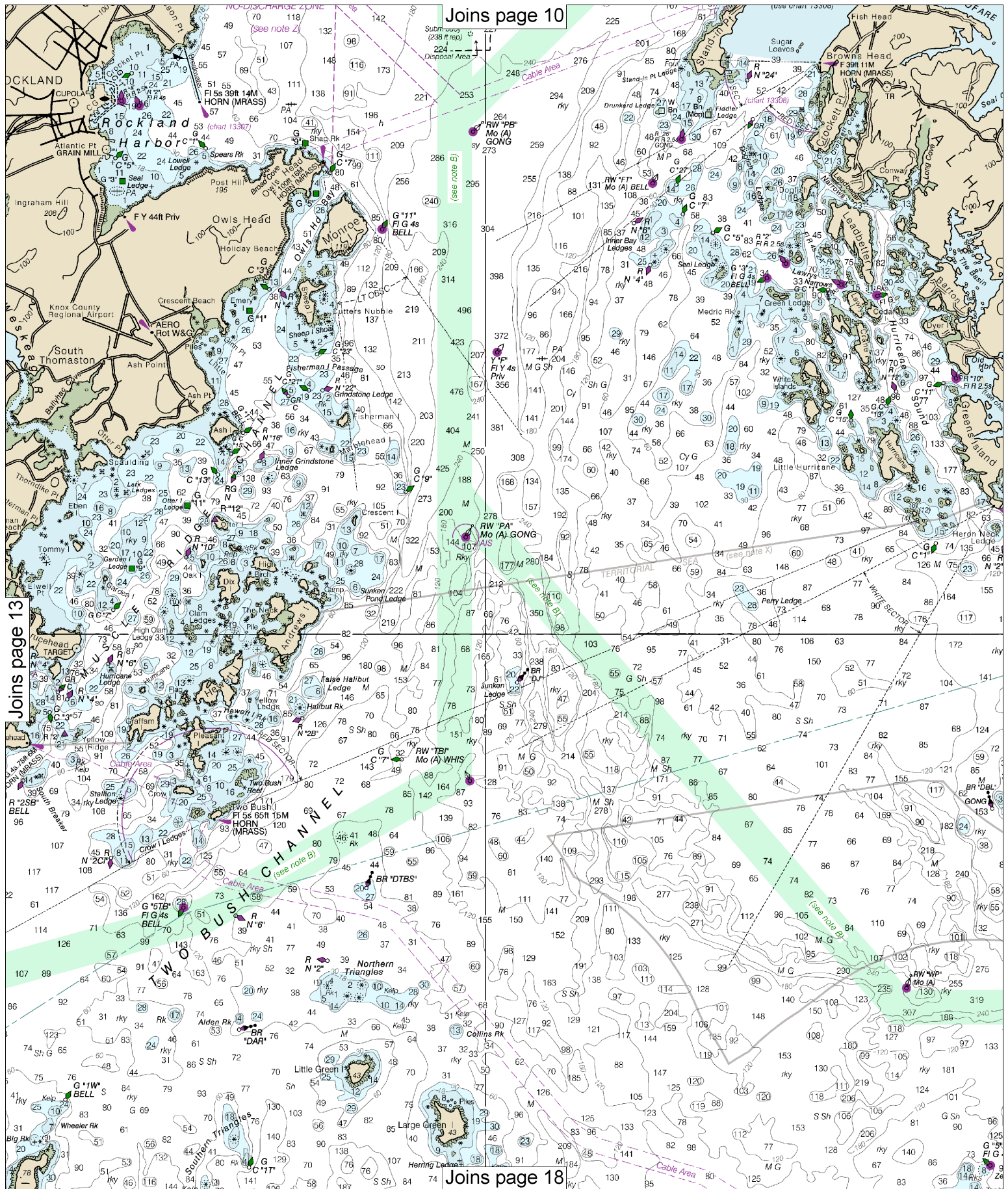
Note: Chart grid lines are aligned with true north.

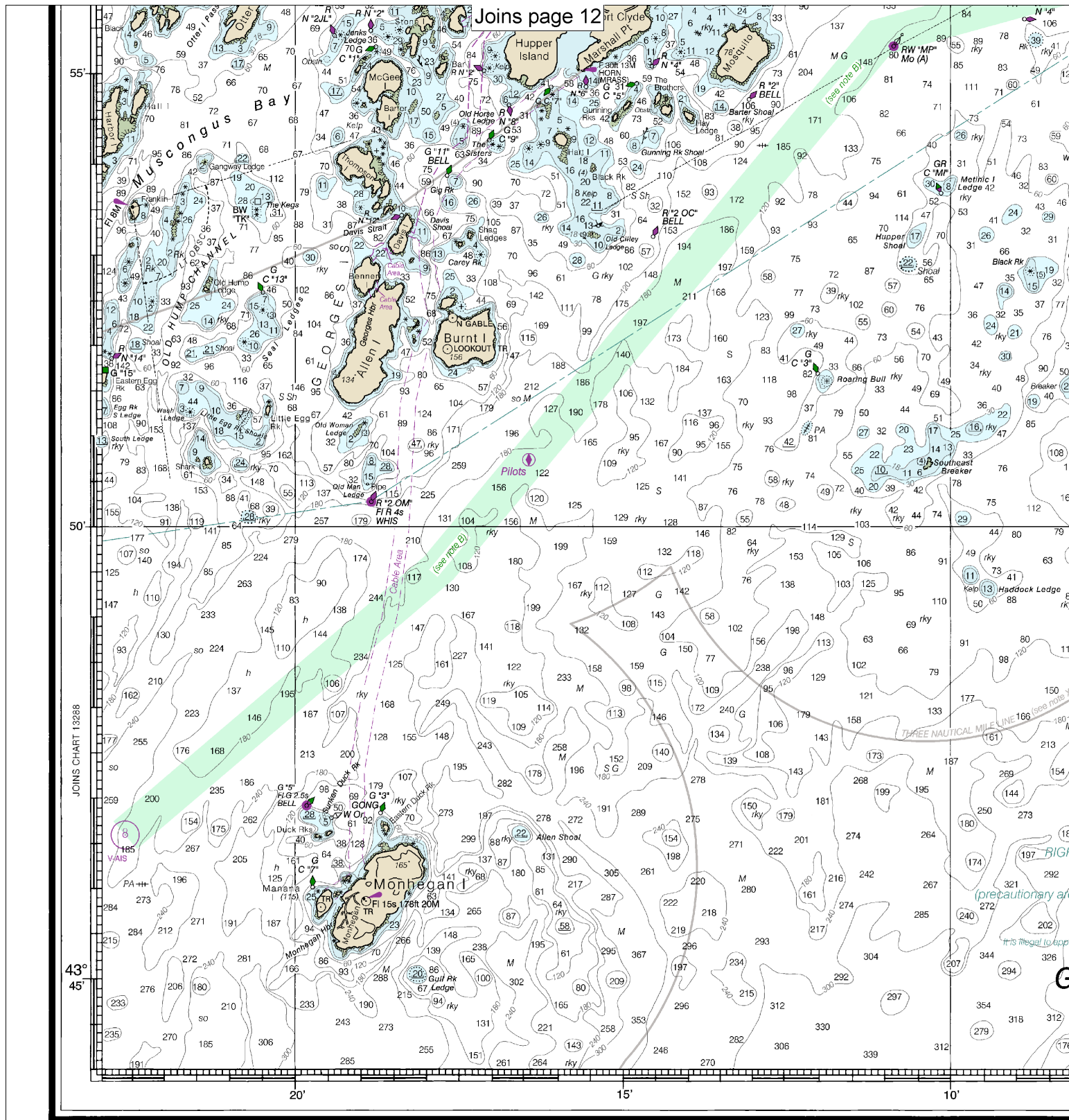
Printed at reduced scale.

SCALE 1:80,000
Nautical Miles

See Note on page 5.







13302

CAUTION

This chart has been corrected from the Notice to Mariners (NM) published weekly by the National Geospatial-Intelligence Agency and the Local Notice to Mariners (LNM) issued periodically by each U.S. Coast Guard district to the dates shown in the lower left hand corner. Chart updates corrected from Notice to Mariners published after the dates shown in the lower left hand corner are available at nauticalcharts.noaa.gov.

NOAA encourages users to submit inquiries, discrepancies, or corrections to this chart at <http://www.nauticalcharts.noaa.gov/sta>

This is the Last Edition of this chart. It will be canceled on Nov 29, 2023
25th Ed., Apr. 2019, Last Correction: 7/19/2023, Cleared through:
LNM: 4223 (10/17/2023), NM: 4323 (10/28/2023), CHS: 0923 (9/29/2023)

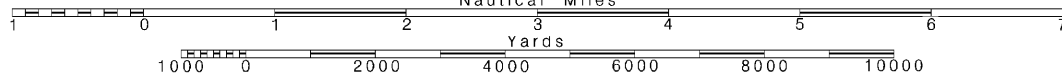
16

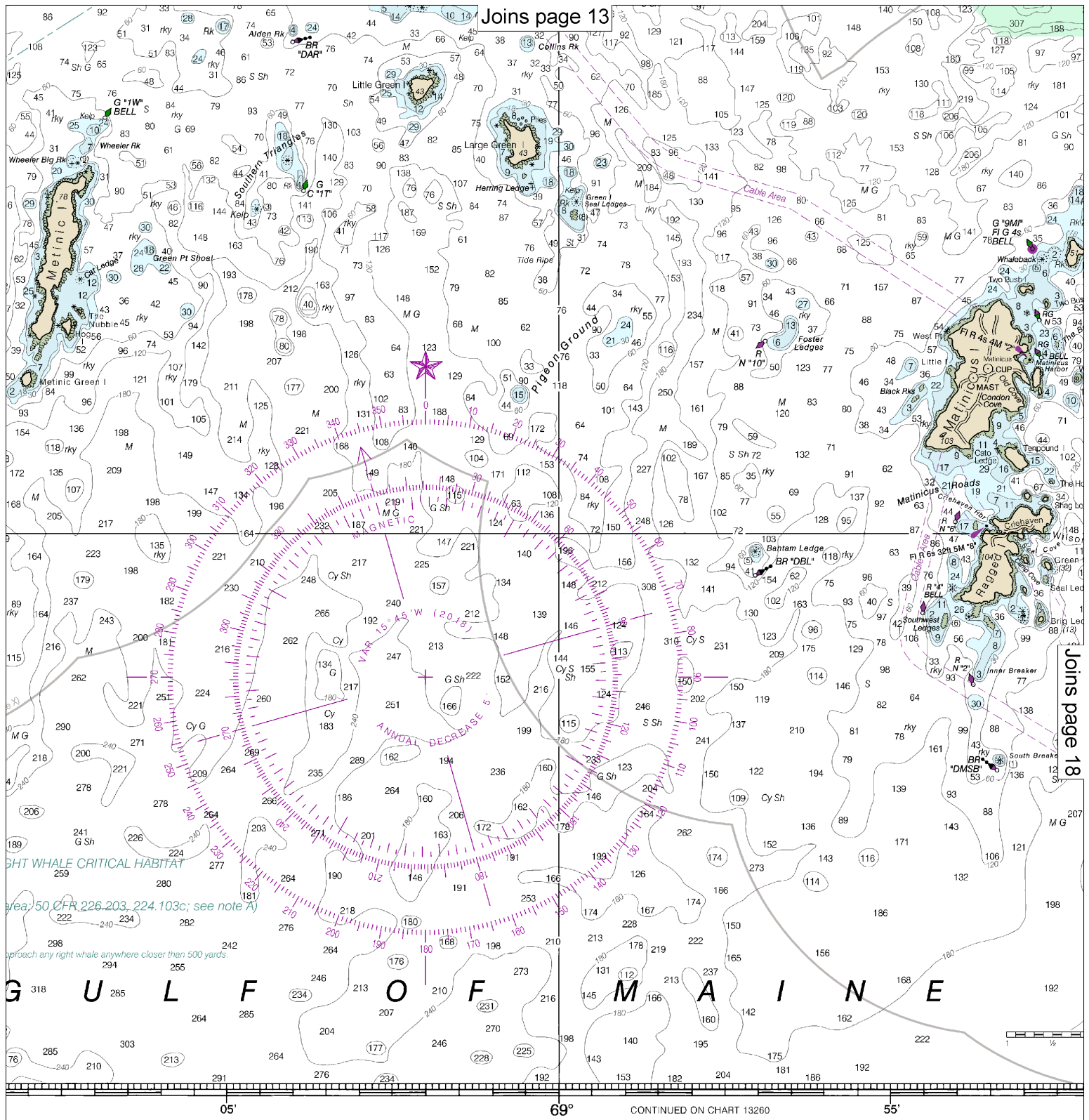
Note: Chart grid lines are aligned with true north.

Printed at reduced scale.

SCALE 1:80,000
Nautical Miles

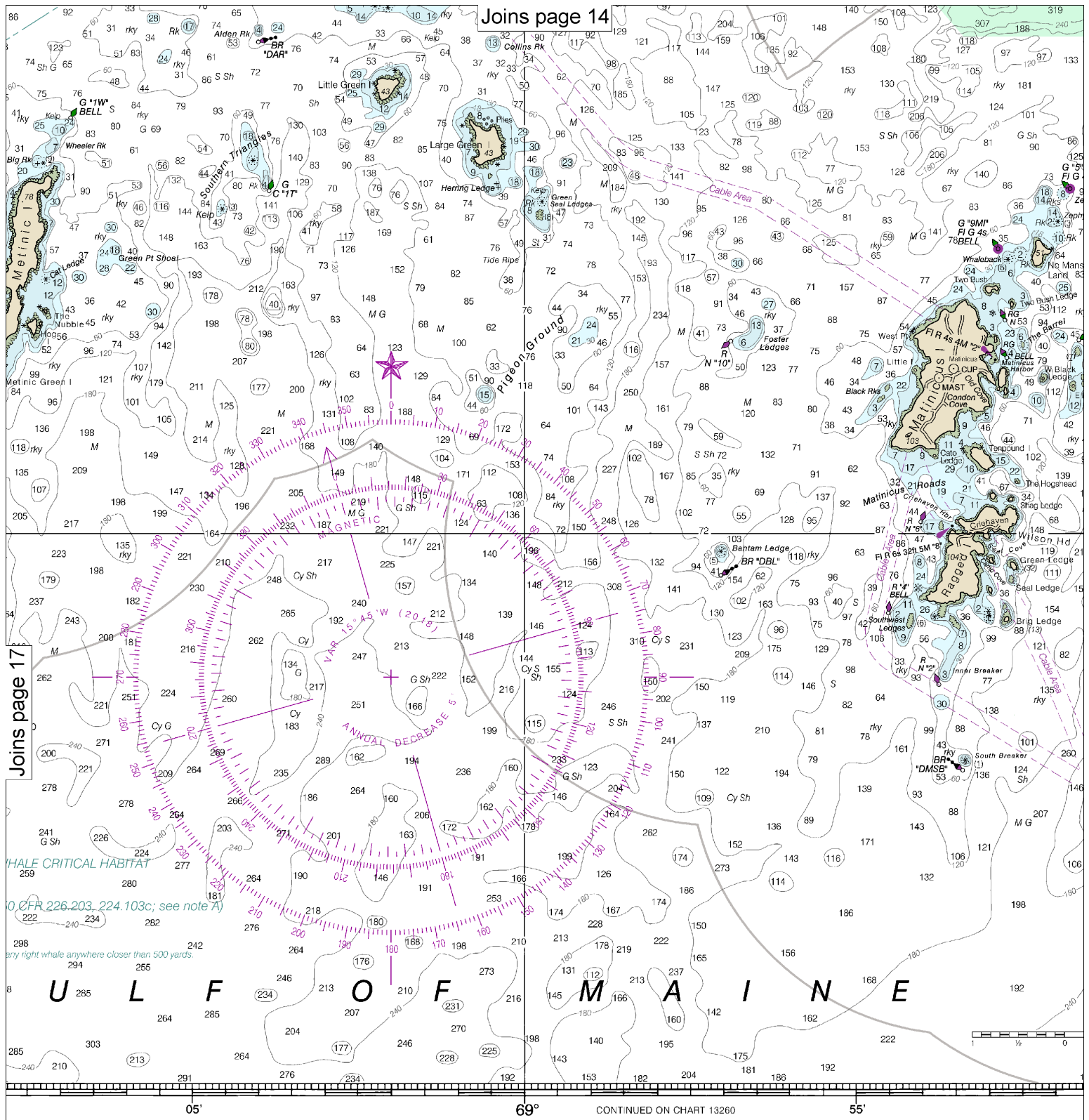
See Note on page 5.





panies or comments
taff/contact.htm.

Published at Washington, D.C.
U.S. DEPARTMENT OF COMMERCE
NATIONAL OCEANIC AND ATMOSPHERIC ADMINISTRATION
NATIONAL OCEAN SERVICE
COAST SURVEY

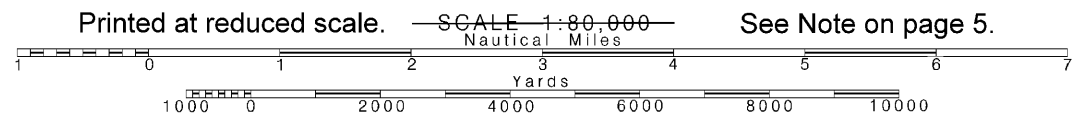


or comments
act.htm.

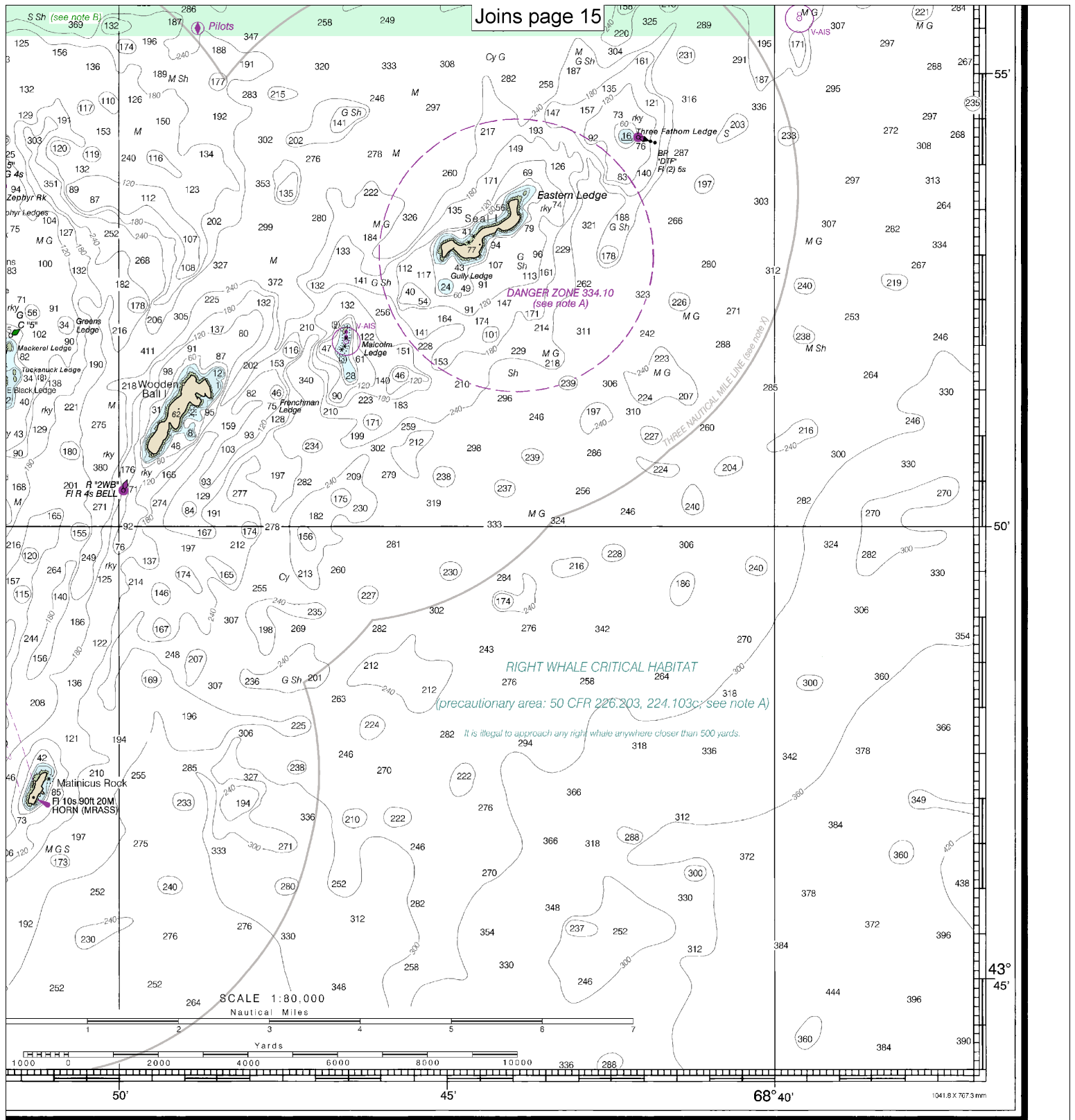
Published at Washington, D.C.
 U.S. DEPARTMENT OF COMMERCE
 NATIONAL OCEANIC AND ATMOSPHERIC ADMINISTRATION
 NATIONAL OCEAN SERVICE
 COAST SURVEY

FATHOM
 FEET
 METERS

Note: Chart grid lines are aligned with true north.



See Note on page 5.



MS	1	2	3	4	5	6	7	8	9	10	11	12	13	14	15	16	17
T	6	12	18	24	30	36	42	48	54	60	66	72	78	84	90	96	102
RS	1	2	3	4	5	6	7	8	9	10	11	12	13	14	15	16	17

Penobscot Bay and Approaches
 SOUNDINGS IN FEET - SCALE 1:80,000
SOUNDINGS IN FEET

13302



VHF Marine Radio channels for use on the waterways:

Channel 6 – Inter-ship safety communications.

Channel 9 – Communications between boats and ship-to-coast.

Channel 13 – Navigation purposes at bridges, locks, and harbors.

Channel 16 – Emergency, distress and safety calls to Coast Guard and others, and to initiate calls to other

vessels. Contact the other vessel, agree to another channel, and then switch.

Channel 22A – Calls between the Coast Guard and the public. Severe weather warnings, hazards to navigation and safety warnings are broadcast here.

Channels 68, 69, 71, 72 and 78A – Recreational boat channels.

Getting and Giving Help — Signal other boaters using visual distress signals (flares, orange flag, lights, arm signals); whistles; horns; and on your VHF radio. You are required by law to help boaters in trouble. Respond to distress signals, but do not endanger yourself.



NOAA Weather Radio All Hazards (NWR) is a nationwide network of radio stations broadcasting continuous weather information directly from the nearest National Weather Service office. NWR broadcasts official Weather Service warnings, watches, forecasts and other hazard information 24 hours a day, 7 days a week.

<http://www.nws.noaa.gov/nwr/>

Distress Call Procedures

- Make sure radio is on.
- Select Channel 16.
- Press/Hold the transmit button.
- Clearly say: "MAYDAY, MAYDAY, MAYDAY."
- Also give: Vessel Name and/or Description; Position and/or Location; Nature of Emergency; Number of People on Board.
- Release transmit button.
- Wait for 10 seconds — If no response Repeat MAYDAY call.

HAVE ALL PERSONS PUT ON LIFE JACKETS!

Quick References

Nautical chart related products and information	—	http://www.nauticalcharts.noaa.gov
Interactive chart catalog	—	http://www.charts.noaa.gov/InteractiveCatalog/nrnc.shtml
Report a chart discrepancy	—	http://ocsddata.ncd.noaa.gov/idrs/discrepancy.aspx
Chart and chart related inquiries and comments	—	http://ocsddata.ncd.noaa.gov/idrs/inquiry.aspx?frompage=ContactUs
Chart updates (LNM and NM corrections)	—	http://www.nauticalcharts.noaa.gov/mcd/updates/LNM_NM.html
Coast Pilot online	—	http://www.nauticalcharts.noaa.gov/nsd/cpdownload.htm
Tides and Currents	—	http://tidesandcurrents.noaa.gov
Marine Forecasts	—	http://www.nws.noaa.gov/om/marine/home.htm
National Data Buoy Center	—	http://www.ndbc.noaa.gov/
NowCoast web portal for coastal conditions	—	http://www.nowcoast.noaa.gov/
National Weather Service	—	http://www.weather.gov/
National Hurricane Center	—	http://www.nhc.noaa.gov/
Pacific Tsunami Warning Center	—	http://ptwc.weather.gov/
Contact Us	—	http://www.nauticalcharts.noaa.gov/staff/contact.htm



— For the latest news from Coast Survey, follow **@NOAAcharts**



This Booklet chart has been designed for duplex printing (printed on front and back of one sheet). If a duplex option is not available on your printer, you may print each sheet and arrange them back-to-back to allow for the proper layout when viewing.