

BookletChart™

Chesapeake Bay

NOAA Chart 12280

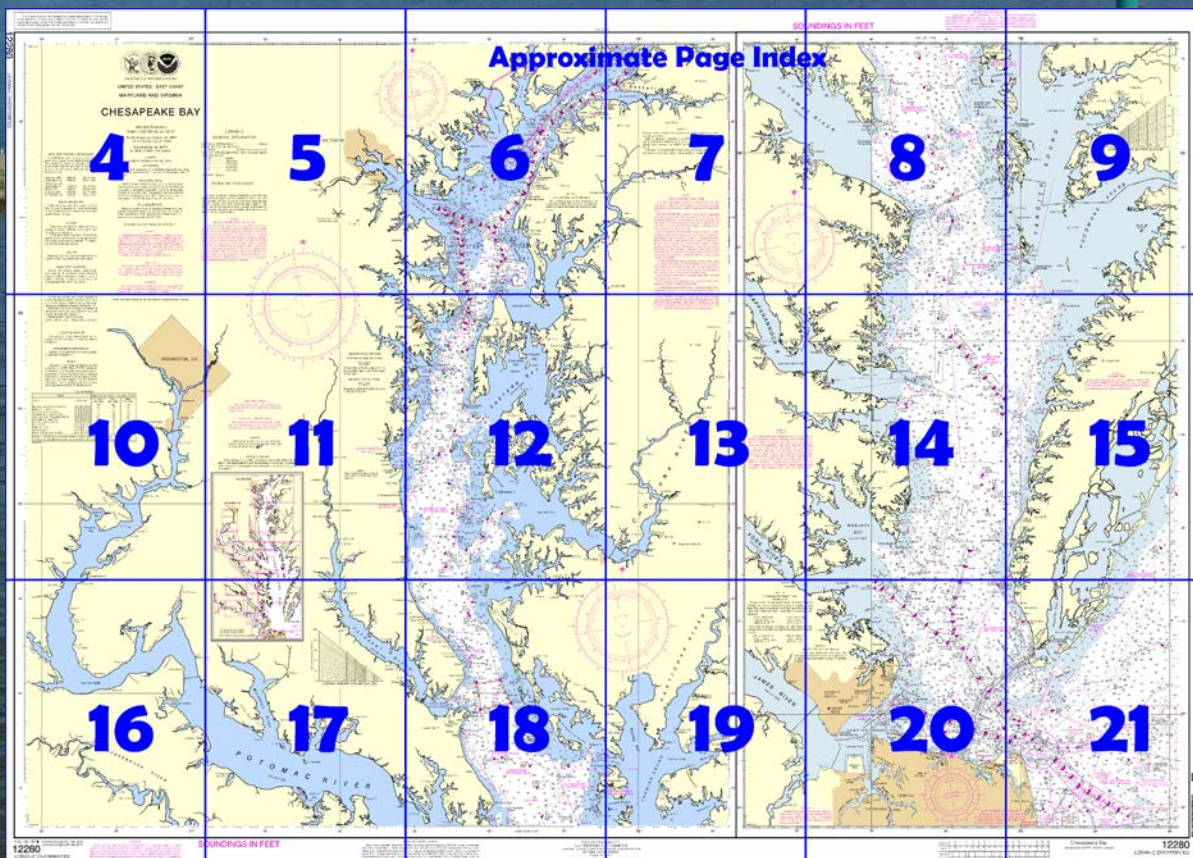


A reduced-scale NOAA nautical chart for small boaters

When possible, use the full-size NOAA chart for navigation.



- Complete, reduced-scale nautical chart
- Print at home for free
- Convenient size
- Up-to-date with Notices to Mariners
- Compiled by NOAA's Office of Coast Survey, the nation's chartmaker



Published by the
National Oceanic and Atmospheric Administration
National Ocean Service
Office of Coast Survey
www.NauticalCharts.NOAA.gov
888-990-NOAA

What are Nautical Charts?

Nautical charts are a fundamental tool of marine navigation. They show water depths, obstructions, buoys, other aids to navigation, and much more. The information is shown in a way that promotes safe and efficient navigation. Chart carriage is mandatory on the commercial ships that carry America's commerce. They are also used on every Navy and Coast Guard ship, fishing and passenger vessels, and are widely carried by recreational boaters.

What is a BookletChart™?

This BookletChart is made to help recreational boaters locate themselves on the water. It has been reduced in scale for convenience, but otherwise contains all the information of the full-scale nautical chart. The bar scales have also been reduced, and are accurate when used to measure distances in this BookletChart. See the Note at the bottom of page 5 for the reduction in scale applied to this chart.

Whenever possible, use the official, full scale NOAA nautical chart for navigation. Nautical chart sales agents are listed on the Internet at <http://www.NauticalCharts.NOAA.gov>.

This BookletChart does NOT fulfill chart carriage requirements for regulated commercial vessels under Titles 33 and 44 of the Code of Federal Regulations.

Notice to Mariners Correction Status

This BookletChart has been updated for chart corrections published in the U.S. Coast Guard Local Notice to Mariners, the National Geospatial Intelligence Agency Weekly Notice to Mariners, and, where applicable, the Canadian Coast Guard Notice to Mariners. Additional chart corrections have been made by NOAA in advance of their publication in a Notice to Mariners. The last Notices to Mariners applied to this chart are listed in the Note at the bottom of page 7. Coast Pilot excerpts are not being corrected.

For latest Coast Pilot excerpt visit the Office of Coast Survey website at http://www.nauticalcharts.noaa.gov/nsd/coastpilot_w.php?book=3.



(Selected Excerpts from Coast Pilot)

Chesapeake Bay, the largest inland body of water along the Atlantic coast of the United States, is 168 miles long with a greatest width of 23 miles. The bay is the approach to Norfolk, Newport News, Baltimore, and many lesser ports. Deep-draft vessels use the Atlantic entrance, which is about 10 miles wide between Fishermans Island on the north and Cape Henry on the south. Medium-draft vessels can enter from

Delaware Bay on the north via Chesapeake and Delaware Canal, and lightdraft vessels can enter from Albemarle Sound on the south via the Intracoastal Waterway.

The waters surrounding a vessel that is carrying liquefied petroleum gas are a **safety zone** while the vessel transits the Chesapeake Bay and

Elizabeth River. (See **165.506**, chapter 2, for limits and regulations.)

North Atlantic Right Whales.—Endangered North Atlantic right whales may occur within 30 miles of the Virginia coasts in the approaches to the Chesapeake Bay (peak season: November through April, although right whales have been sighted in the area year round). (See **North Atlantic Right Whales**, indexed as such in Chapter 3, for more information on right whales and recommend measures to avoid collisions.)

All vessels 65 feet or greater in length overall (L.O.A.) and subject to the jurisdiction of the United States are restricted to speeds of 10 knots or less in a Seasonal Management Area existing around the entrance to the Chesapeake Bay between November 1 and April 30. The area is defined as the waters within a 20-nm radius of 37°00'36.9"N., 75°57'50.5"W. (See 50 CFR **224.105** in Chapter 2 for regulations, limitations, and exceptions.)

Chesapeake Light (36°54'17"N., 75°42'46"W.), 117 feet above the water, is shown from a blue tower on a white superstructure on four piles, 14 miles eastward of Cape Henry. The name CHESAPEAKE is displayed on all sides. A sound signal and racon are at the light. A fish haven, consisting of sunken fishing-boat hulls and marked by private unlighted buoys, is about 0.4 mile southwestward of the light.

Cape Charles, on the north side of the entrance, is low and bare, but the land back of it is high and wooded. **Wise Point** is the most southerly mainland tip of the cape. Low **Fishermans Island**, a National Wildlife Refuge, is 1 mile south of Wise Point.

The southwest end of **Smith Island** is 2.4 miles eastward of Wise Point; the island is 6 miles long, low and sparsely wooded, and awash at half tide midway along its length.

Cape Charles Light (37°07'23"N., 75°54'23"W.), 180 feet above the water, is shown from an octagonal, pyramidal skeleton tower, upper part black and lower part white, on the southwestern part of Smith Island.

Smith Island Shoal, which breaks in heavy weather, has depths of 21 feet 7.5 miles east-southeast of Cape Charles Light. Depths less than 40 feet extend another 5 miles northeastward. Outer limits of the shoal area are marked by a lighted buoy.

Nautilus Shoal, which extends 4 miles southeastward from Fishermans Island, has patches with depths of 6 to 11 feet. The buoyed channel along the southwest side of Nautilus Shoal, thence northward between Fishermans Island and **Inner Middle Ground**, had a controlling depth of about 16 feet in 1977-1980. The channel is used by local vessels drawing up to 12 feet. This channel is not recommended for strangers because of shifting shoals. In 1996, a 10-foot shoal was reported 1.5 miles S of Fishermans Island in about 37°03'31.2"N., 075°57'27.0"W.

Breakers frequently occur along the axis of Inner Middle Ground, starting on the seaward side of the Chesapeake Bay Bridge-Tunnel and continuing the entire length of the shoal. This phenomenon appears to be associated with large swells rolling in from sea from the south-southeast to southeast.

Cape Henry, on the south side of the entrance, has a range of sand hills about 80 feet high.

Cape Henry Light (36°55'35"N., 76°00'26"W.), 164 feet above the water, is shown from an octagonal, pyramidal tower, upper and lower half of each face alternately black and white, on the beach near the turn of the cape.

A **naval restricted area** extends northward and eastward from Cape Henry. (See **334.320**, chapter 2, for limits and regulations.)

U.S. Coast Guard Rescue Coordination Center 24 hour Regional Contact for Emergencies

RCC Norfolk

Commander

5th CG District

Norfolk, VA

(575) 398-6231

Navigation Manager Regions



To make suggestions, ask questions, or report a problem with a chart, go to <https://www.nauticalcharts.noaa.gov/customer-service/assist/>

Lateral System As Seen Entering From Seaward

on navigable waters except Western Rivers

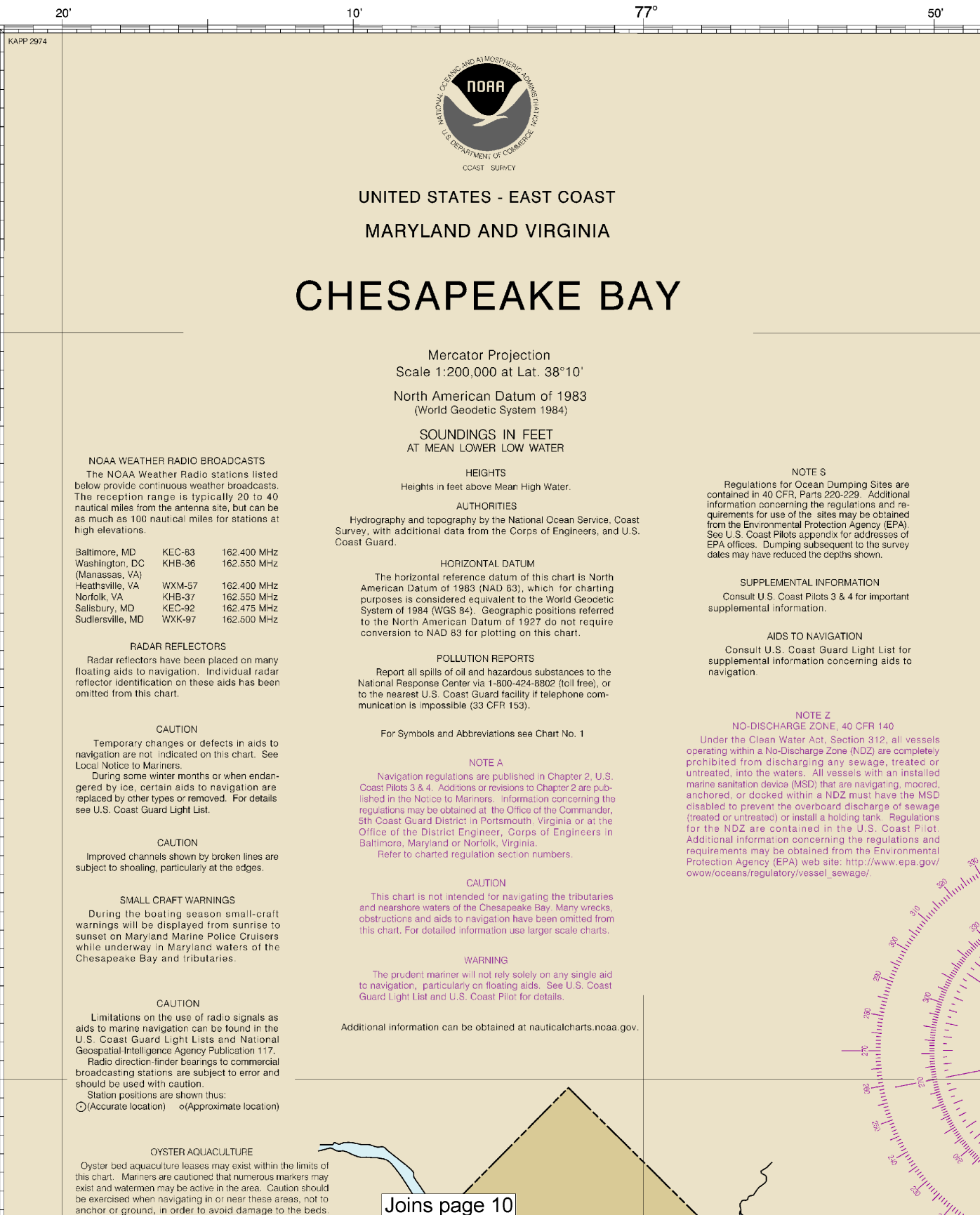


For more information on aids to navigation, including those on Western Rivers, please consult the latest USCG Light List for your area. These volumes are available online at <http://www.navcen.uscg.gov>

SOUNDINGS IN FEET

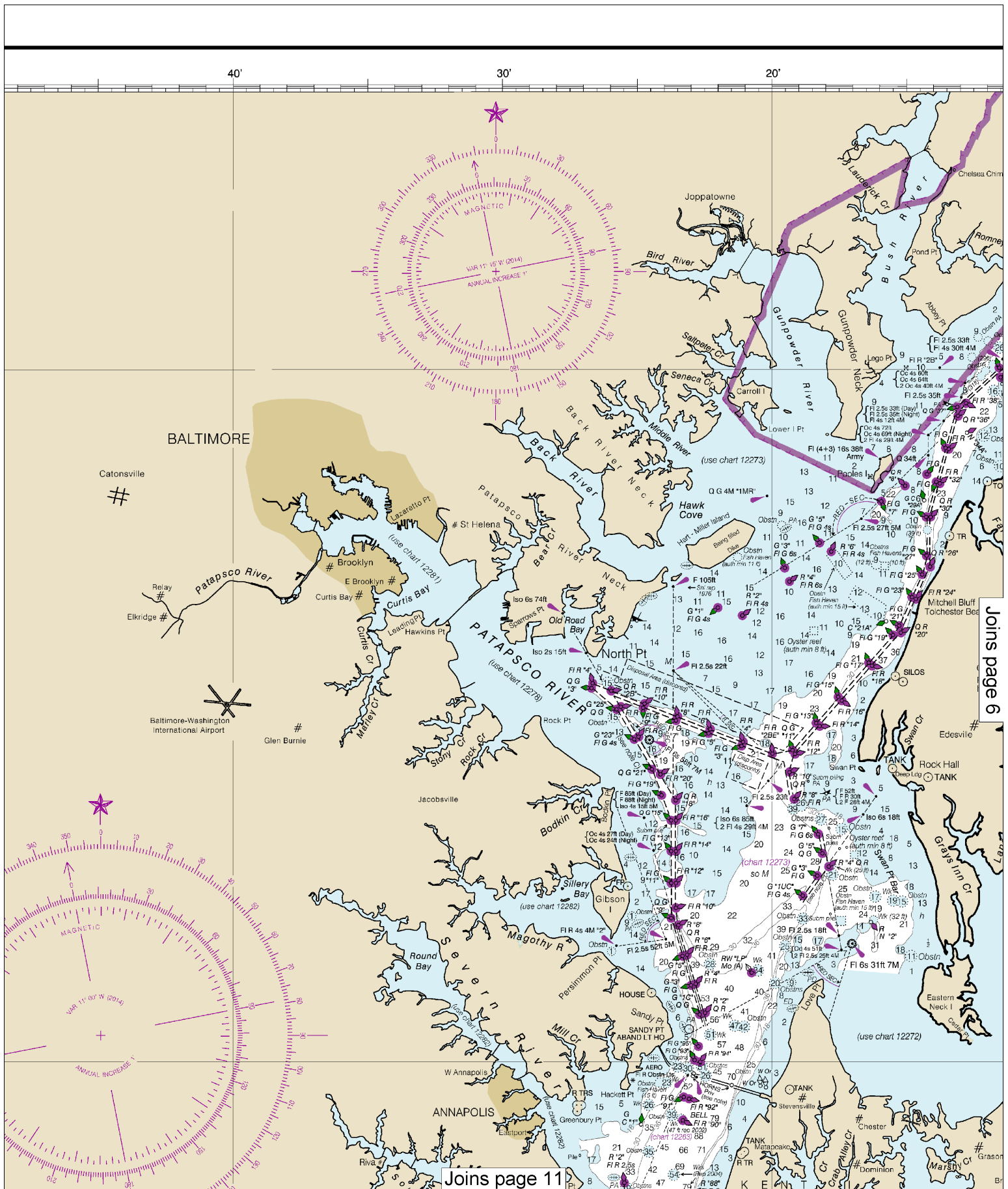
12280

4

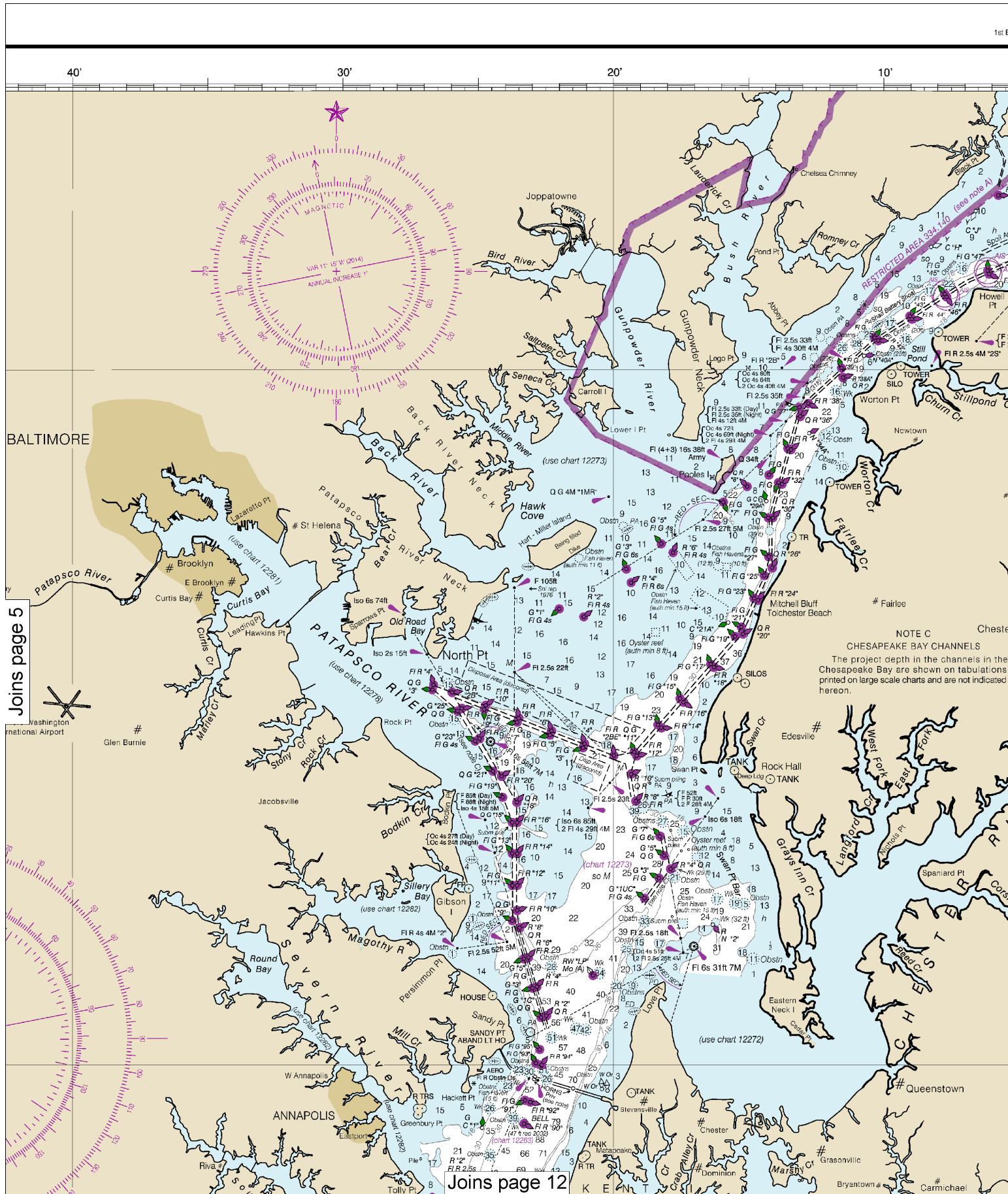


Joins page 10

Note: Chart grid lines are aligned with true north.



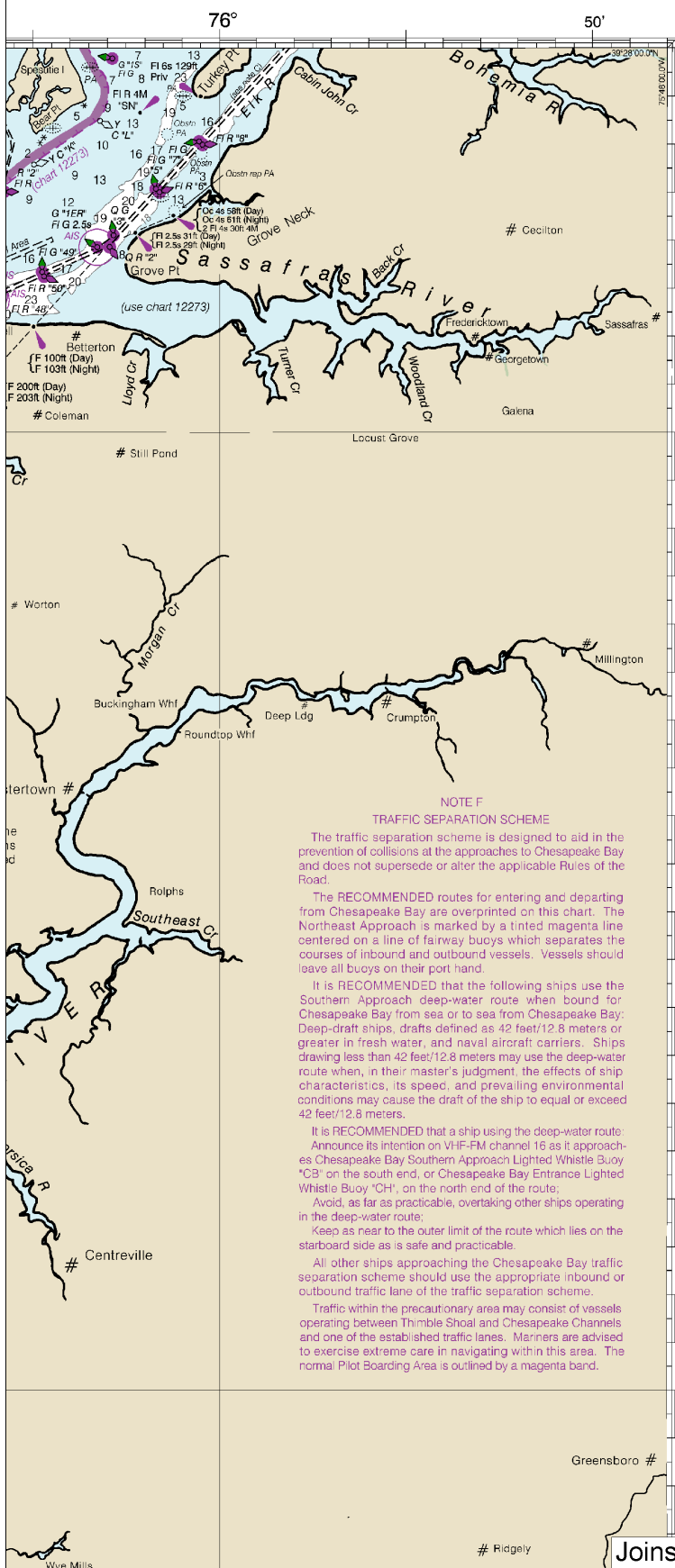
This BookletChart was reduced to 75% of the original chart scale.
 The new scale is 1:266666. Barscales have also been reduced and
 are accurate when used to measure distances in this BookletChart.



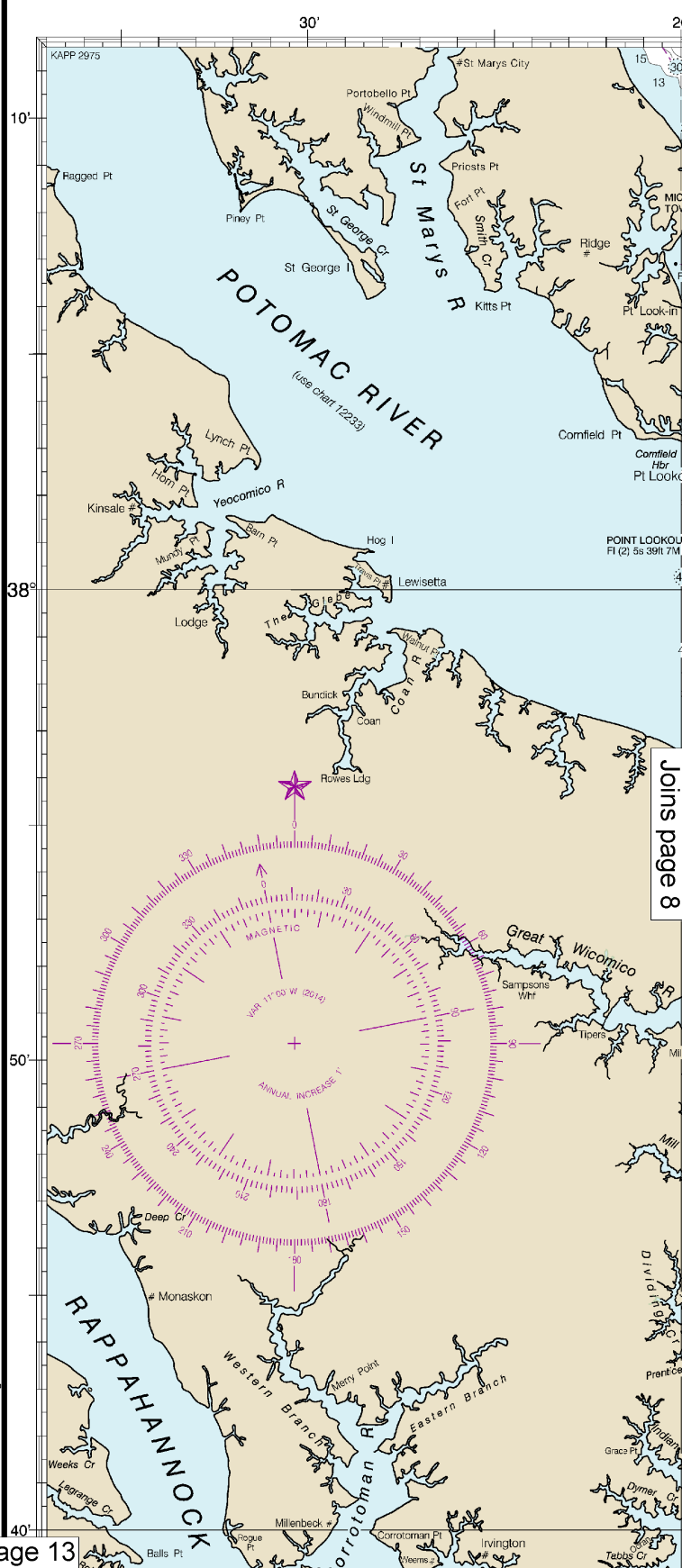
Joins page 5

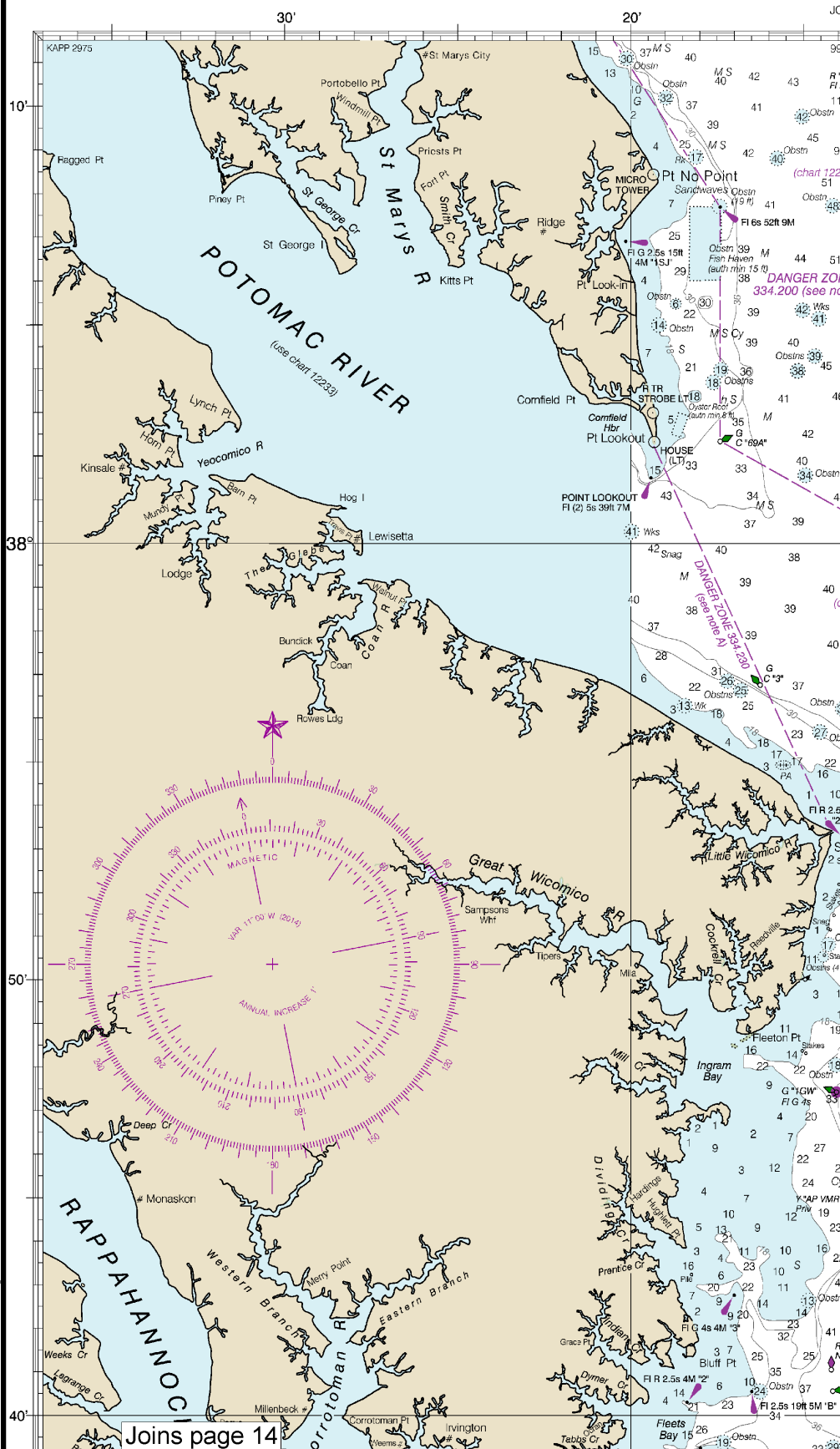
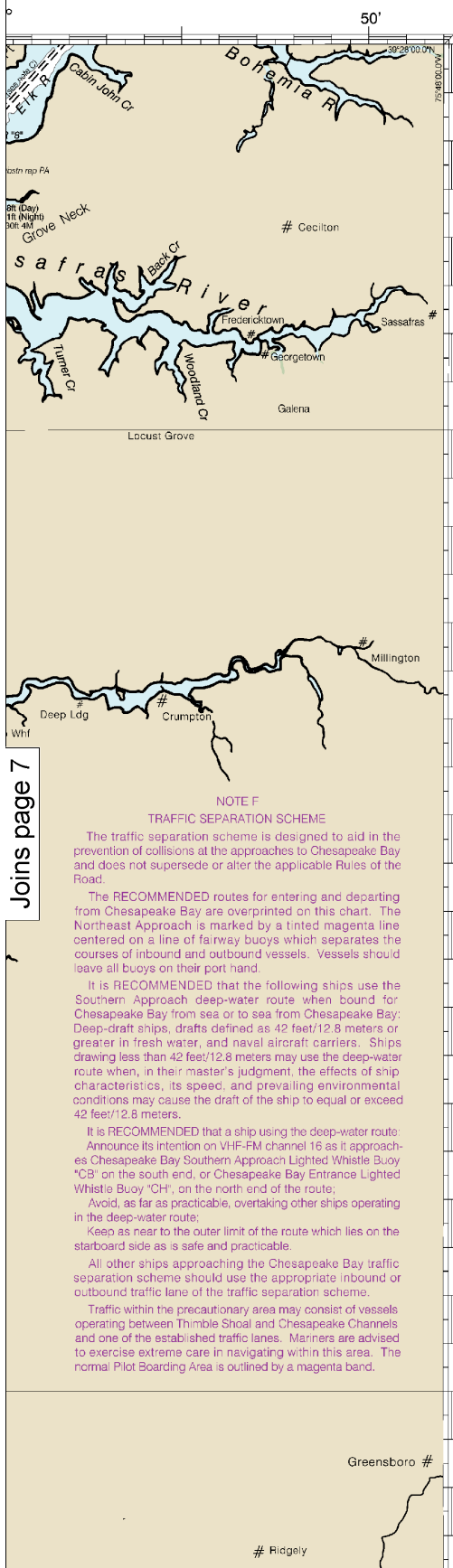
Joins page 12

NOTE C
CHESAPEAKE BAY CHANNELS
The project depth in the channels in the Chesapeake Bay are shown on tabulations printed on large scale charts and are not indicated hereon.



Joins page 13







Do not rely on any single aid to navigation, particularly on floating aids. See U.S. Coast Guard Light List and U.S. Coast Pilot for details.

CAUTION

Limitations on the use of radio signals as aids to marine navigation can be found in the U.S. Coast Guard Light Lists and National Geospatial-Intelligence Agency Publication 117. Radio direction-finder bearings to commercial broadcasting stations are subject to error and should be used with caution. Station positions are shown thus:

○ (Accurate location) ◌ (Approximate location)

Additional information can be obtained at nauticalcharts.noaa.gov.

OYSTER AQUACULTURE

Oyster bed aquaculture leases may exist within the limits of this chart. Mariners are cautioned that numerous markers may exist and watermen may be active in the area. Caution should be exercised when navigating in or near these areas, not to anchor or ground, in order to avoid damage to the beds. Depths may be shallower than the soundings shown. For more information, contact the local department of natural resources.

TIDAL INFORMATION

PLACE	NAME	(LAT/LONG)	Height referred to datum of soundings (MLLW)		
			Mean Higher High Water	Mean High Water	Mean Low Water
			feet	feet	feet
Betterton, Sassafras River Entrance		(39°22'N/76°04'W)	2.2	1.8	0.2
Baltimore, Ft. McHenry		(39°16'N/76°35'W)	1.7	1.4	0.2
Chestertown, Chester River		(39°12'N/76°04'W)	2.7	2.2	0.4
Annapolis, U.S. Naval Academy		(38°59'N/76°29'W)	1.4	1.2	0.2
Washington D.C., Washington Channel		(38°52'N/77°01'W)	3.2	2.9	0.1
Cambridge, Choptank River		(38°34'N/76°04'W)	2.0	1.8	0.2
Wolf Trap Light		(37°23'N/76°11'W)	1.8	1.7	0.1
Hampton Roads, Sewells Point		(36°57'N/76°20'W)	2.8	2.5	0.1

Dashes (---) located in datum columns indicate unavailable datum values for a tide station. Real-time water levels, tide predictions, and tidal current predictions are available on the Internet from <http://tidesandcurrents.noaa.gov>. (Jan 2014)

WASHINGTON, D.C.

Anacostia

ALEXANDRIA

Marbury Pt

Fox Ferry Pt

NATIONAL HARBOR

Rosier Bluff

Broad Cr

Riverview

Sheridan Pt

Mt Vernon

(use chart 12289)

Bryan Pt

Piscataway Cr

Marshall Hall

Gunston Cove

Belmont Bay

High Pt

Hallowing Pt

Craneys Is

Chapman Pt

Glymont

Indian Head

Deep Pt

Mattawoman Cr

Stump Neck

Chicamuxen Cr

Poseys Whf

Quantico Cr

Quantico #

Chopawamsic Cr

Sandy Pt

Port Tobacco


FISH TRAP AREAS

Fish trap areas and buoys marking the areas are not shown on this chart. See larger scale charts.

CABLE AND PIPELINE AREAS

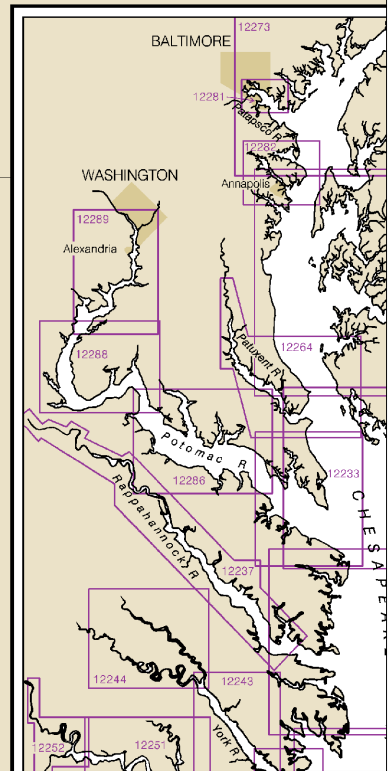
The cable and pipeline areas falling within the areas of the larger scale charts are shown thereon and are not repeated on this chart.

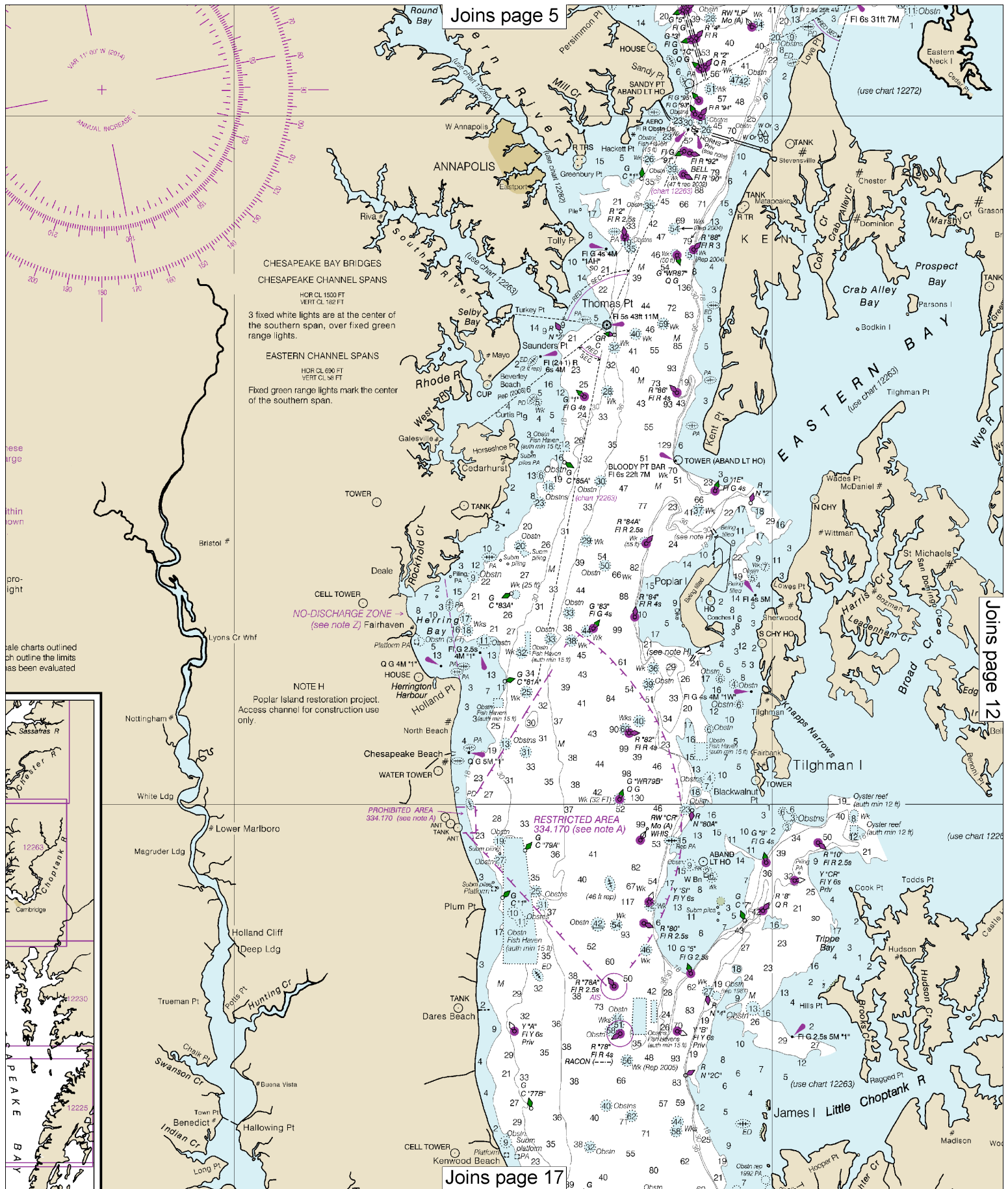
CAUTION

Mariners are warned to stay clear of the protective riprap surrounding navigational light structures shown thus: 

SOURCE DIAGRAMS

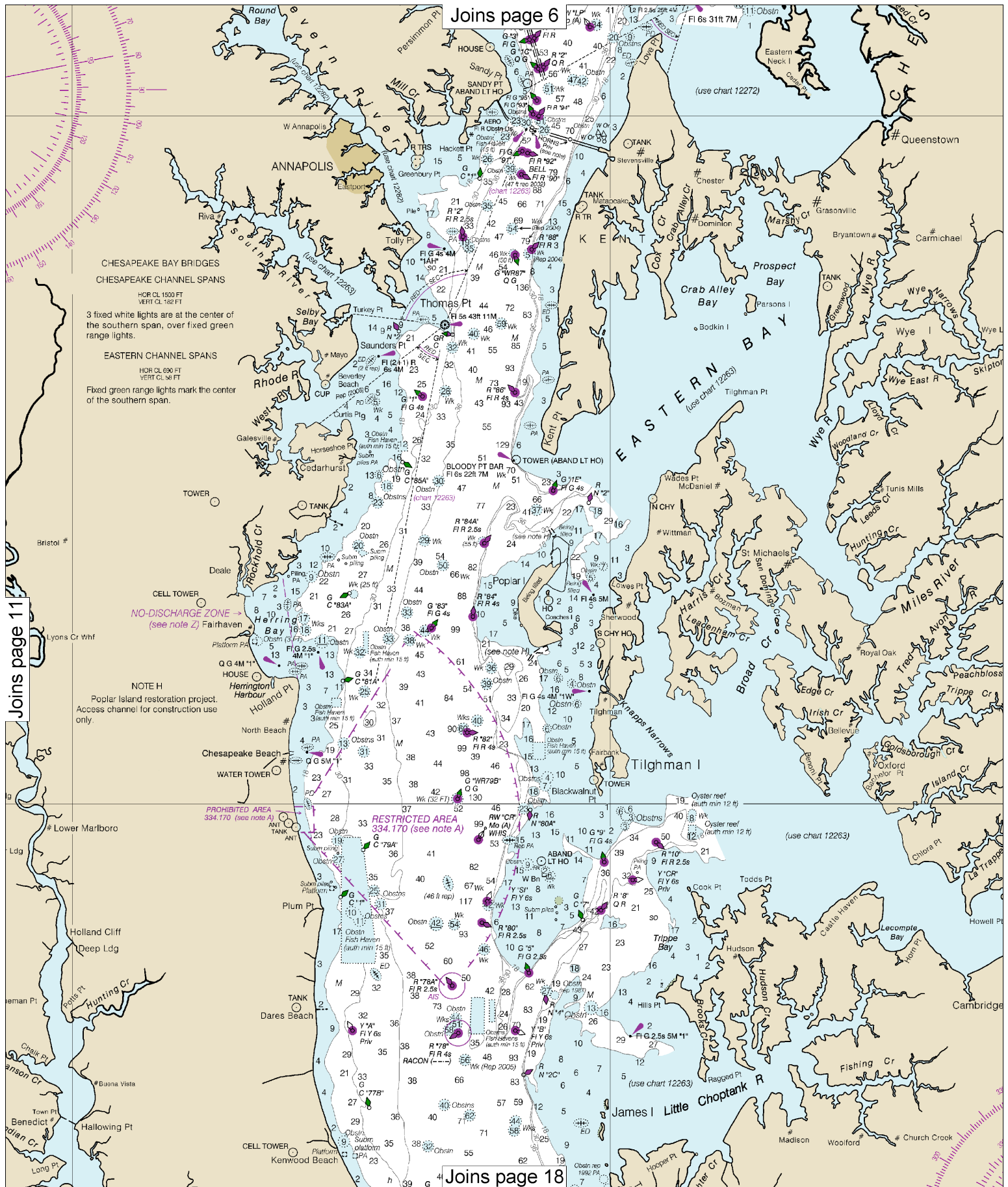
The entire area of this chart is covered by larger scale below. See larger scale charts for Source Diagrams which of the most recent hydrographic survey information that has for charting.

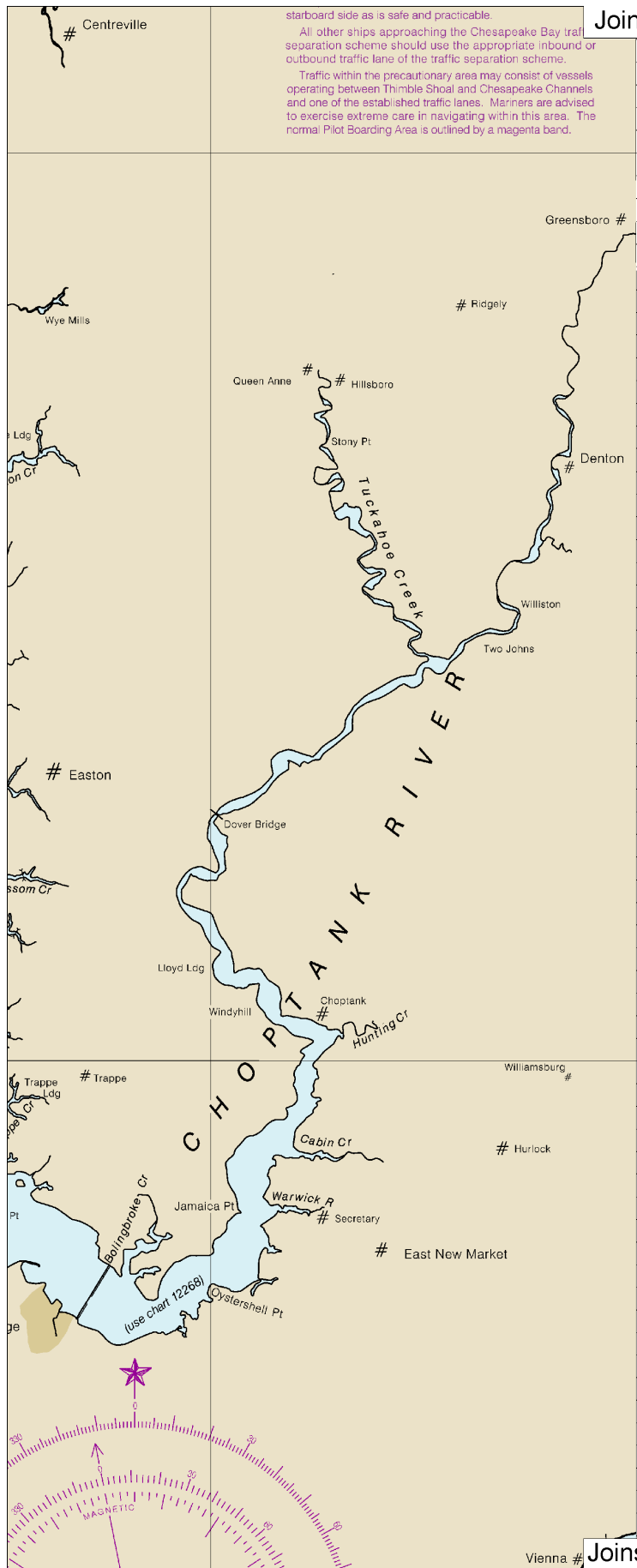




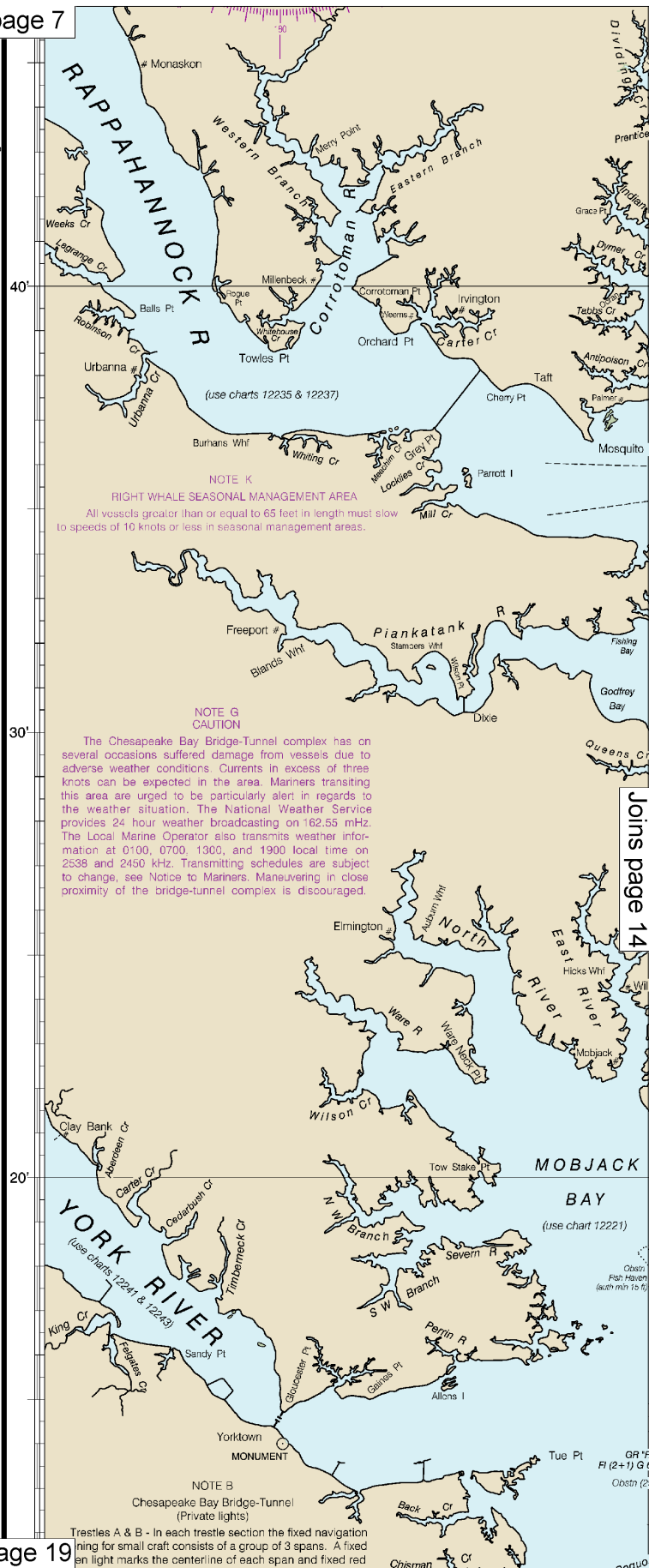
Joins page 5

Joins page 17



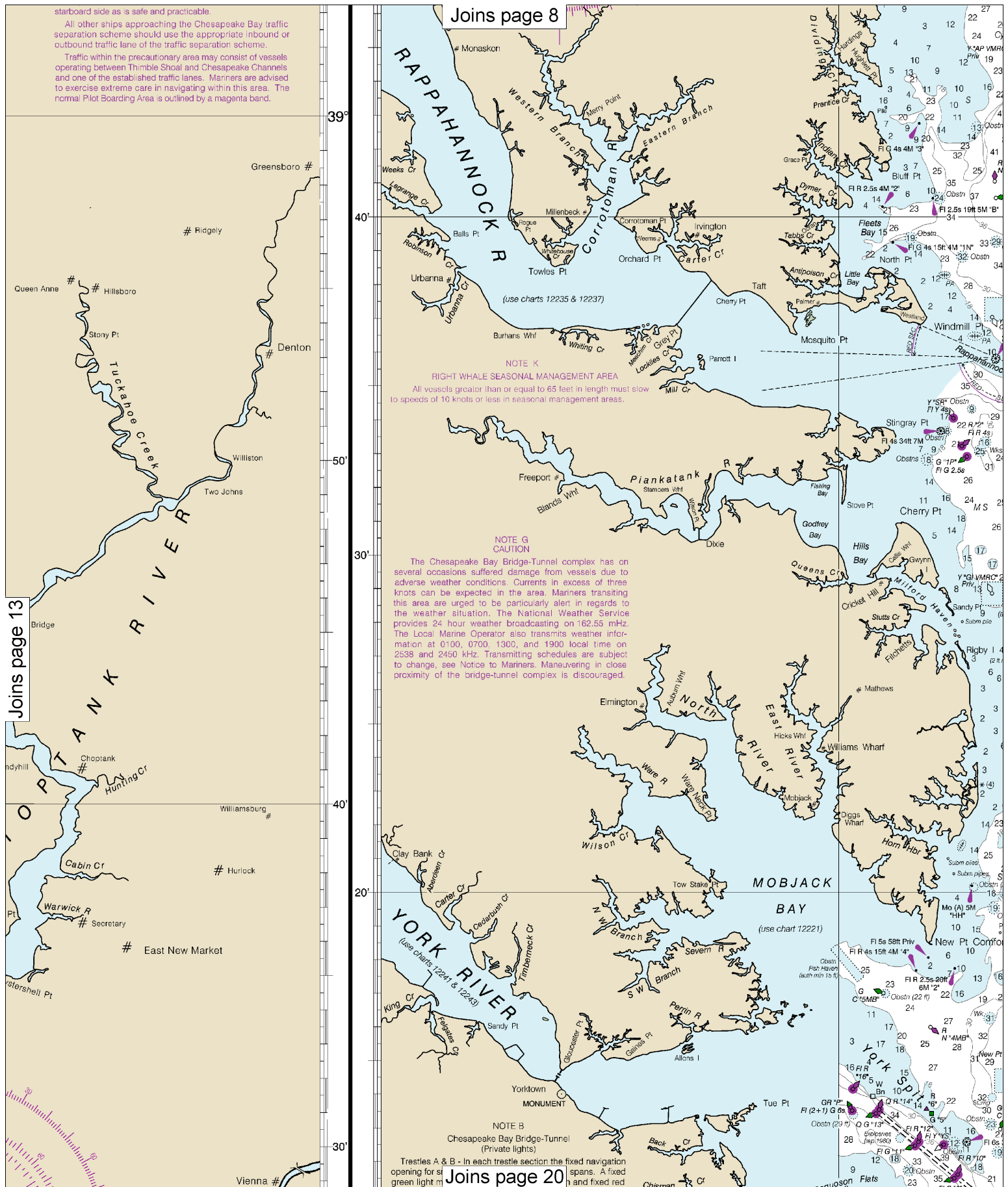


Joins page 7



Joins page 14

Vienna # Joins page 19



starboard side as is safe and practicable.

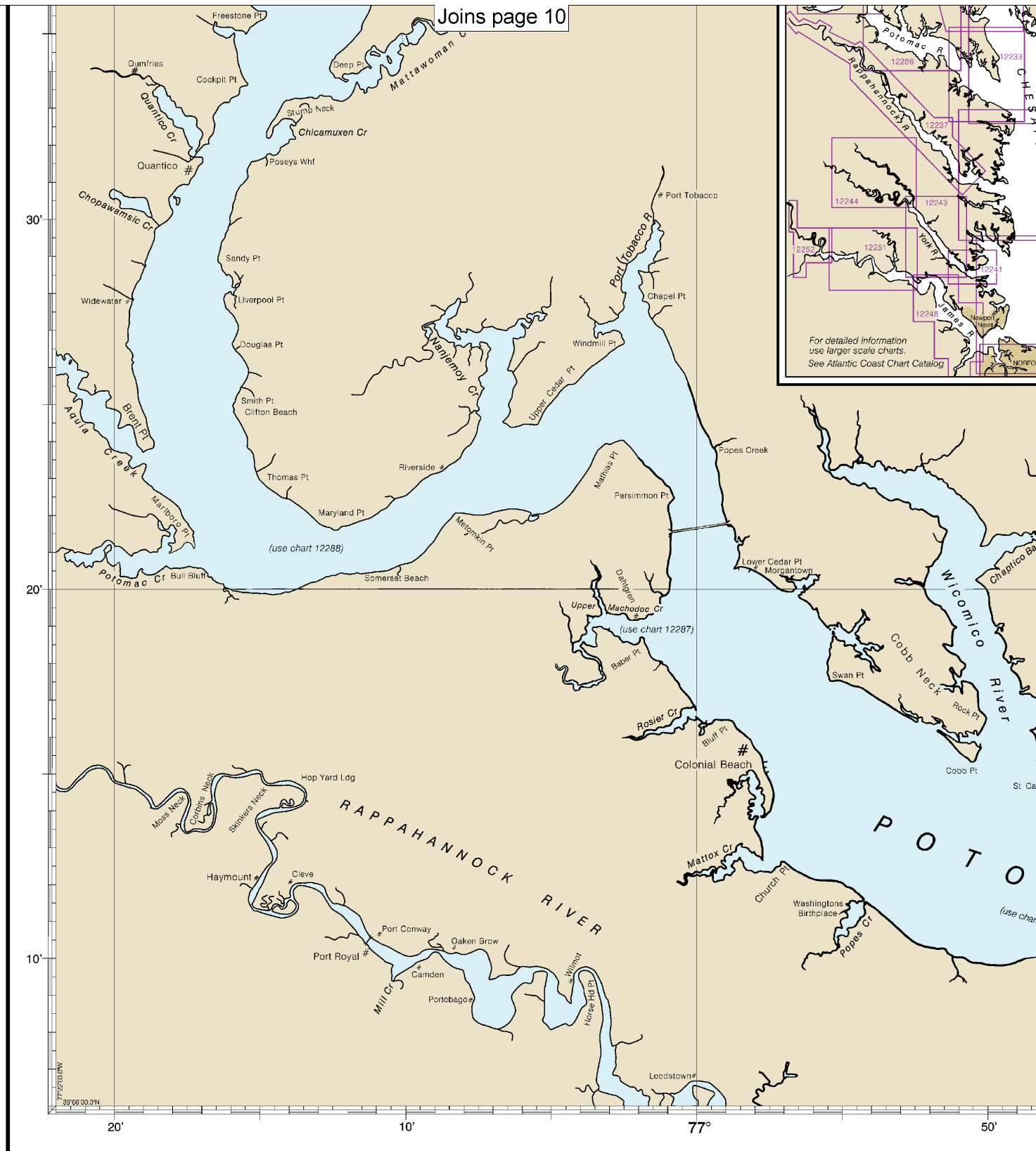
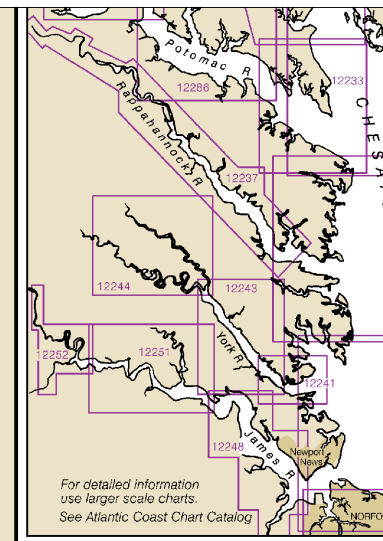
All other ships approaching the Chesapeake Bay traffic separation scheme should use the appropriate inbound or outbound traffic lane of the traffic separation scheme.

Traffic within the precautionary area may consist of vessels operating between Thimble Shoal and Chesapeake Channels and one of the established traffic lanes. Mariners are advised to exercise extreme care in navigating within this area. The normal Pilot Boarding Area is outlined by a magenta band.

Joins page 8

Joins page 13

Joins page 20



12280

CAUTION
This chart has been corrected from the Notice to Mariners (NM) published weekly by the National Geospatial-Intelligence Agency and the Local Notice to Mariners (LNM) issued periodically by each U.S. Coast Guard district to the dates shown in the lower left hand corner. Chart updates corrected from Notice to Mariners published after the dates shown in the lower left hand corner are available at nauticalcharts.noaa.gov.

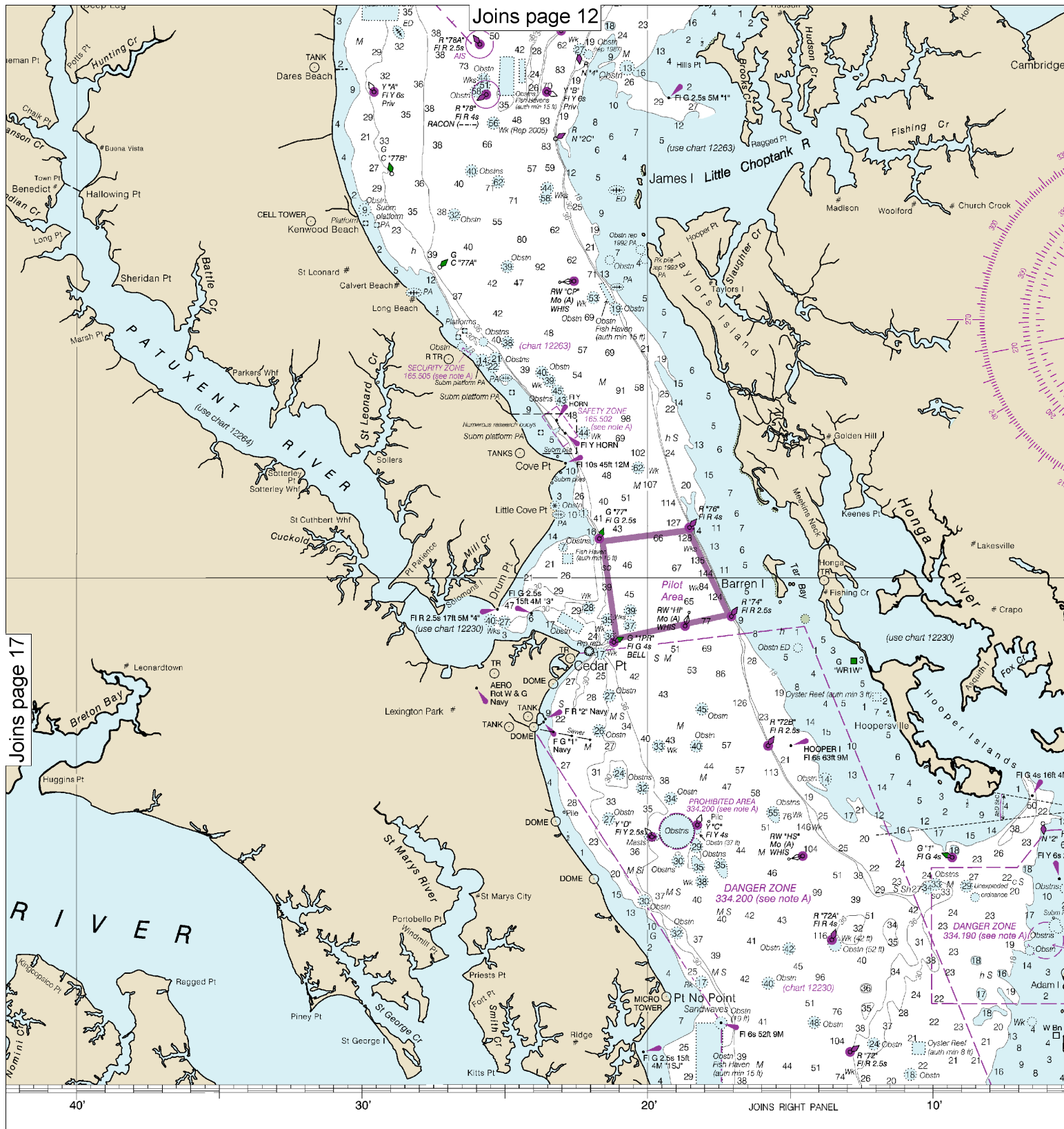
NOAA encourages users to submit inquiries, discrepancies about this chart at <http://www.nauticalcharts.noaa.gov/siaff/cont>

This is the Last Edition of this chart. It will be canceled on Oct 30, 2024
12th Ed., Sep. 2020. Last Correction: 6/3/2024. Cleared through:
LNM: 2224 (5/28/2024), NM: 2324 (6/8/2024)

16

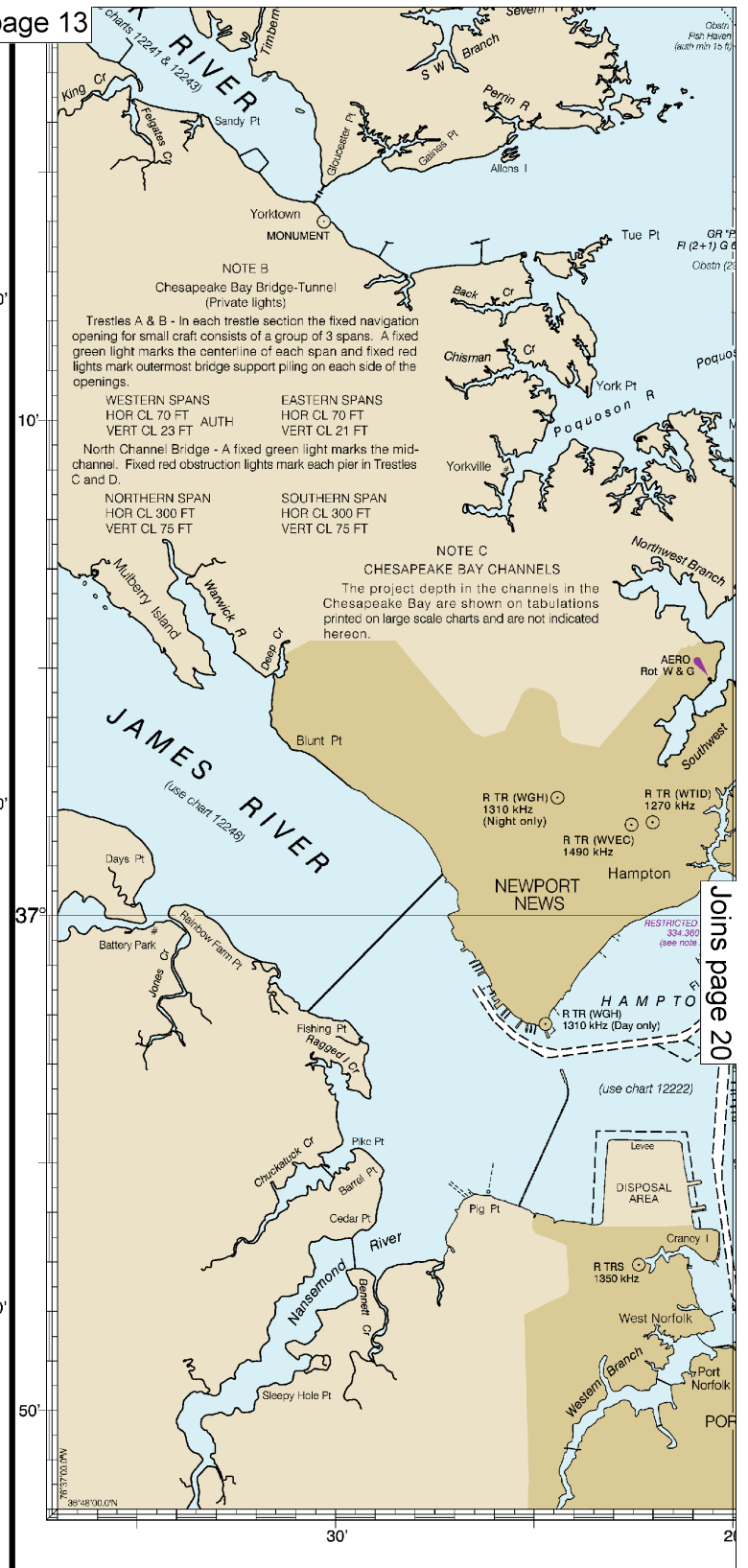
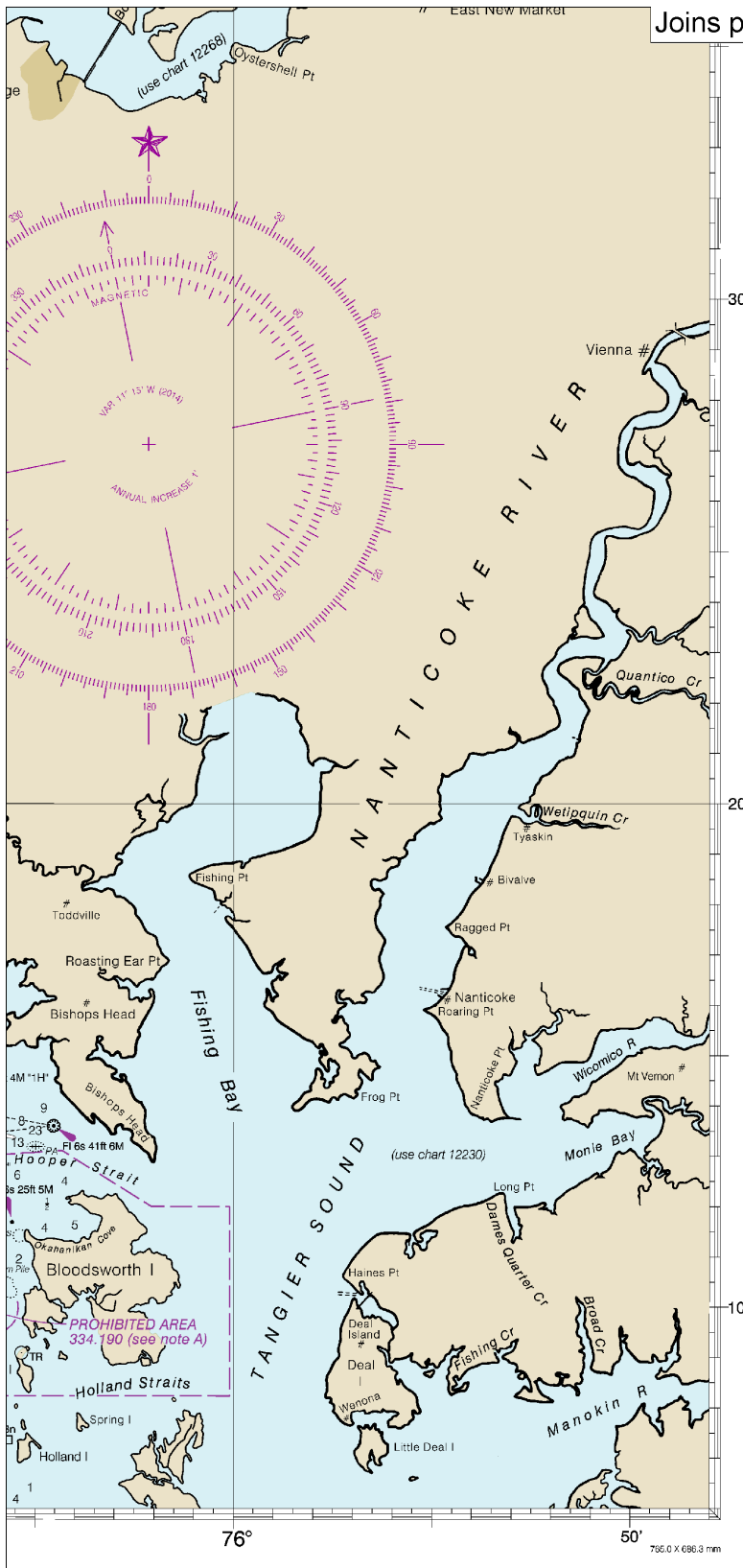
Note: Chart grid lines are aligned with true north.





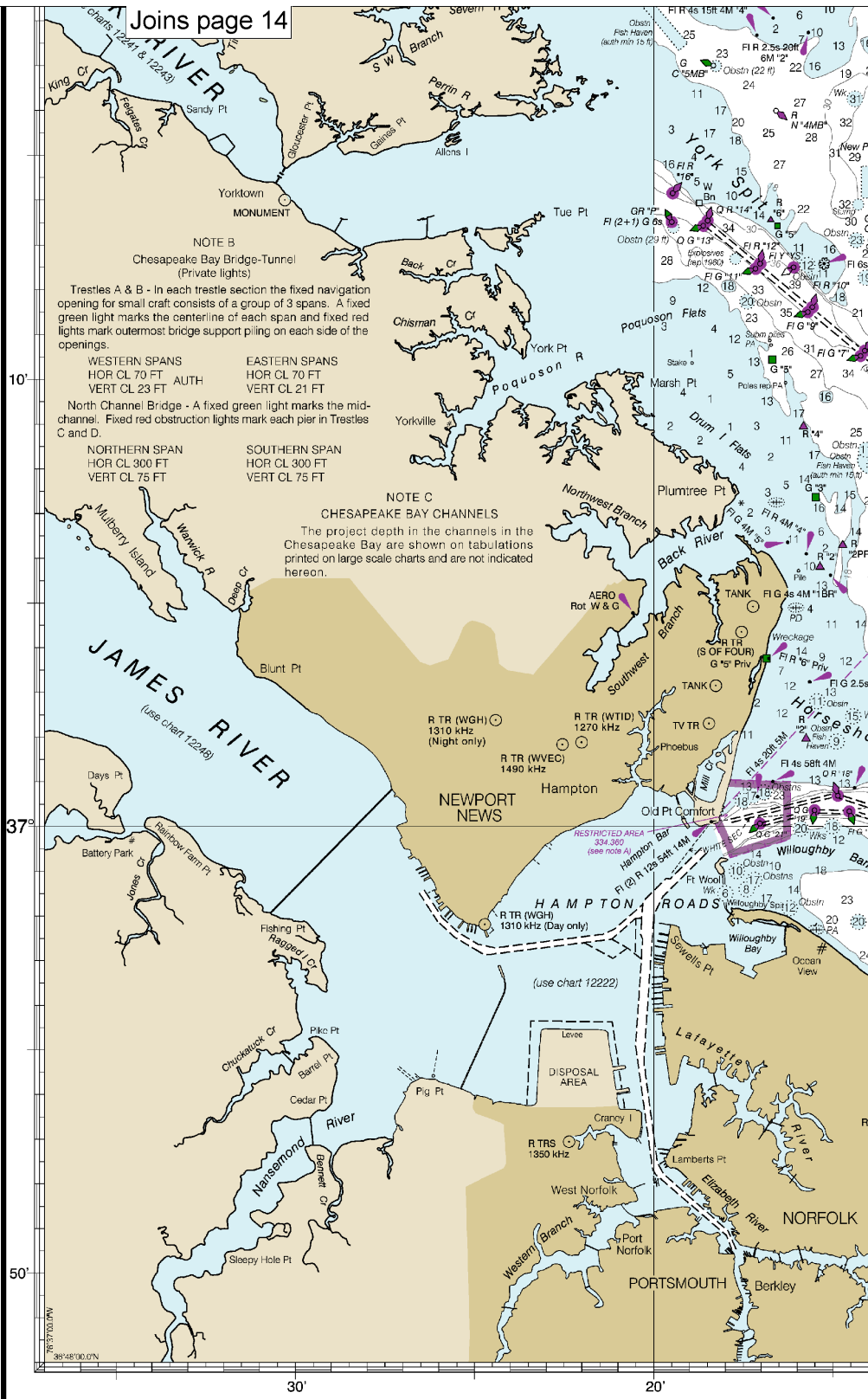
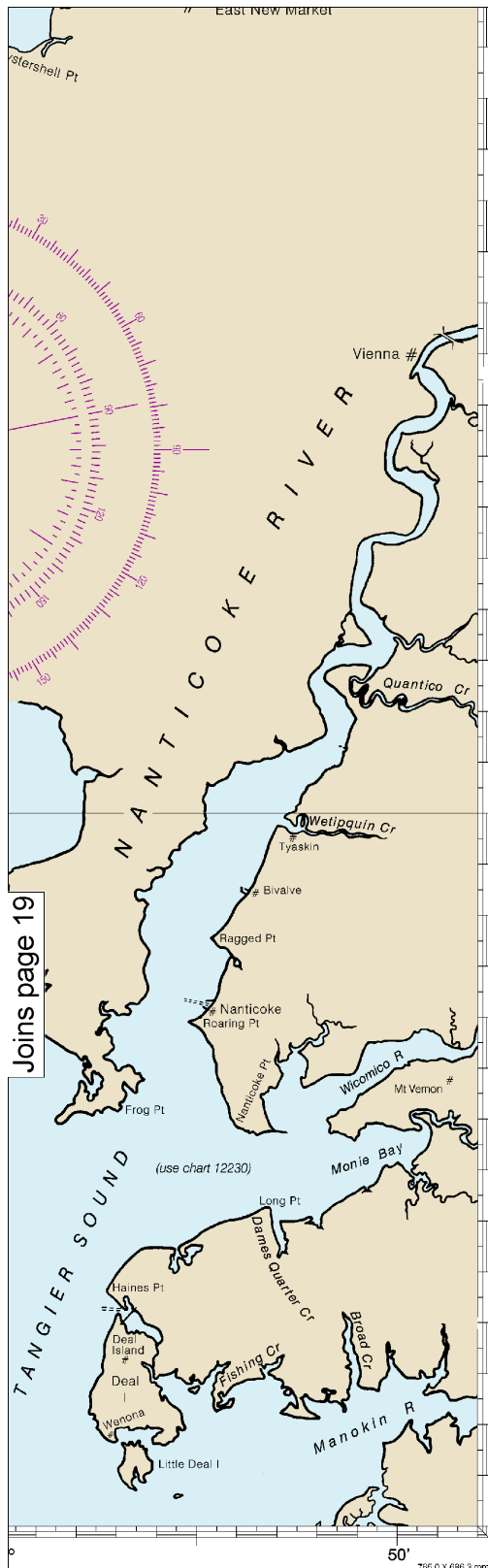
Published at
U.S. DEPARTMENT OF COMMERCE
NATIONAL OCEANIC AND ATMOSPHERIC ADMINISTRATION
NATIONAL COAST GUARD

Note: Chart grid lines are aligned with true north.



at Washington, D.C.
 DEPARTMENT OF COMMERCE
 NATIONAL OCEANIC AND ATMOSPHERIC ADMINISTRATION
 U.S. COAST AND GEODETIC SURVEY

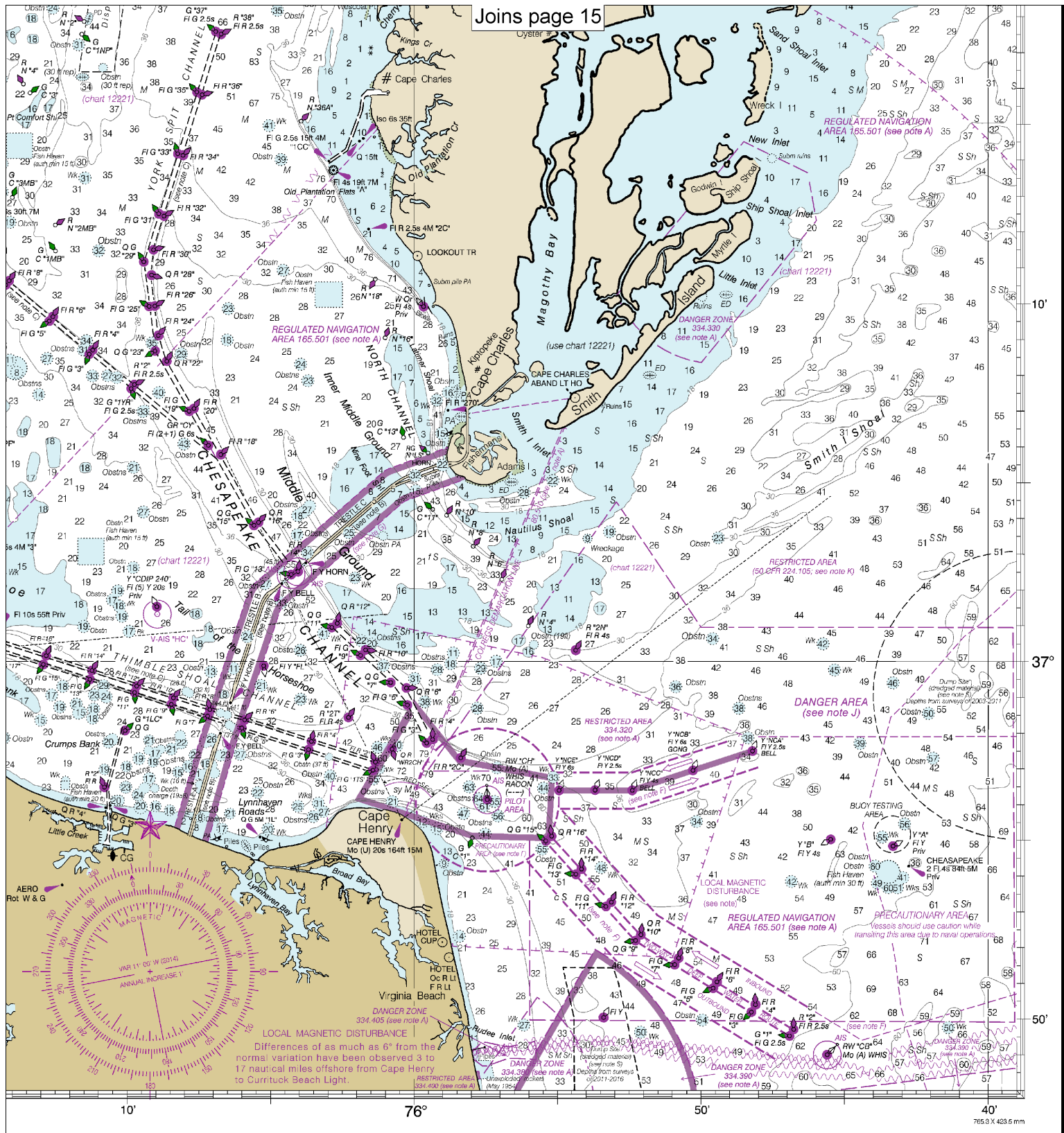
SOUNDING



SOUNDINGS IN FEE

20

Note: Chart grid lines are aligned with true north.



ET

FATHOMS	1	2	3	4	5	6	7	8	9	10	11	12	13	14	15	16	17
FEET	6	12	18	24	30	36	42	48	54	60	66	72	78	84	90	96	102
METERS	1	2	3	4	5	6	7	8	9	10	11	12	13	14	15	16	17

Chesapeake Bay
 SOUNDINGS IN FEET - SCALE 1:200,000

12280



VHF Marine Radio channels for use on the waterways:

Channel 6 – Inter-ship safety communications.

Channel 9 – Communications between boats and ship-to-coast.

Channel 13 – Navigation purposes at bridges, locks, and harbors.

Channel 16 – Emergency, distress and safety calls to Coast Guard and others, and to initiate calls to other

vessels. Contact the other vessel, agree to another channel, and then switch.

Channel 22A – Calls between the Coast Guard and the public. Severe weather warnings, hazards to navigation and safety warnings are broadcast here.

Channels 68, 69, 71, 72 and 78A – Recreational boat channels.

Getting and Giving Help — Signal other boaters using visual distress signals (flares, orange flag, lights, arm signals); whistles; horns; and on your VHF radio. You are required by law to help boaters in trouble. Respond to distress signals, but do not endanger yourself.



NOAA Weather Radio All Hazards (NWR) is a nationwide network of radio stations broadcasting continuous weather information directly from the nearest National Weather Service office. NWR broadcasts official Weather Service warnings, watches, forecasts and other hazard information 24 hours a day, 7 days a week.

<http://www.nws.noaa.gov/nwr/>

Distress Call Procedures

- Make sure radio is on.
- Select Channel 16.
- Press/Hold the transmit button.
- Clearly say: "MAYDAY, MAYDAY, MAYDAY."
- Also give: Vessel Name and/or Description; Position and/or Location; Nature of Emergency; Number of People on Board.
- Release transmit button.
- Wait for 10 seconds — If no response Repeat MAYDAY call.

HAVE ALL PERSONS PUT ON LIFE JACKETS!

Quick References

Nautical chart related products and information	— http://www.nauticalcharts.noaa.gov
Interactive chart catalog	— http://www.charts.noaa.gov/InteractiveCatalog/nrnc.shtml
Report a chart discrepancy	— http://ocsddata.ncd.noaa.gov/idrs/discrepancy.aspx
Chart and chart related inquiries and comments	— http://ocsddata.ncd.noaa.gov/idrs/inquiry.aspx?frompage=ContactUs
Chart updates (LNM and NM corrections)	— http://www.nauticalcharts.noaa.gov/mcd/updates/LNM_NM.html
Coast Pilot online	— http://www.nauticalcharts.noaa.gov/nsd/cpdownload.htm
Tides and Currents	— http://tidesandcurrents.noaa.gov
Marine Forecasts	— http://www.nws.noaa.gov/om/marine/home.htm
National Data Buoy Center	— http://www.ndbc.noaa.gov/
NowCoast web portal for coastal conditions	— http://www.nowcoast.noaa.gov/
National Weather Service	— http://www.weather.gov/
National Hurricane Center	— http://www.nhc.noaa.gov/
Pacific Tsunami Warning Center	— http://ptwc.weather.gov/
Contact Us	— http://www.nauticalcharts.noaa.gov/staff/contact.htm



— For the latest news from Coast Survey, follow **@NOAAcharts**



This Booklet chart has been designed for duplex printing (printed on front and back of one sheet). If a duplex option is not available on your printer, you may print each sheet and arrange them back-to-back to allow for the proper layout when viewing.