

BookletChart™

Galveston to Rio Grande

NOAA Chart 11300

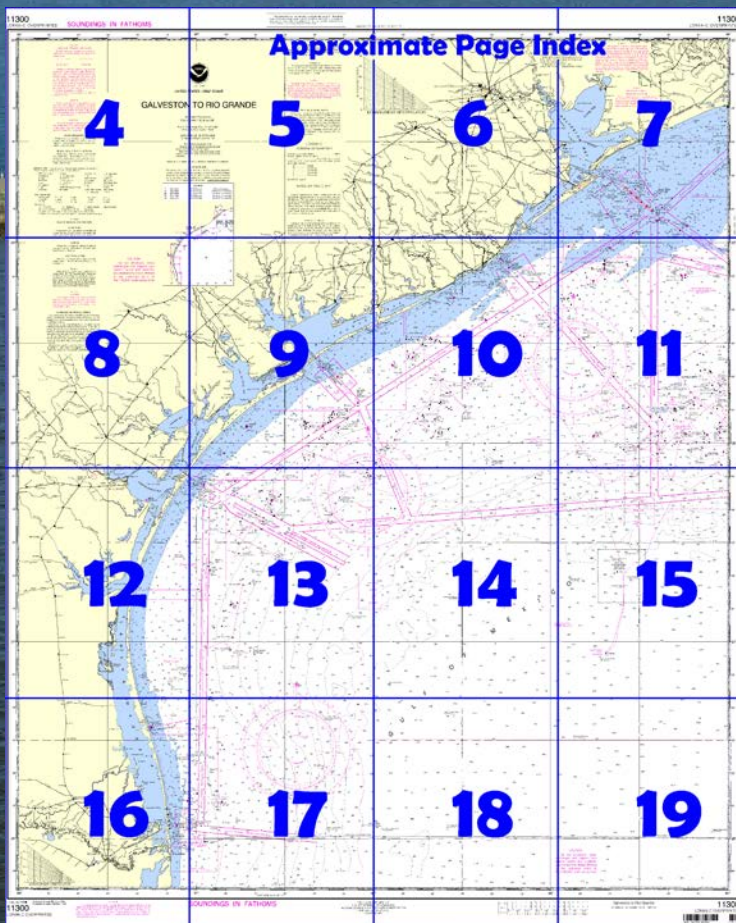


A reduced-scale NOAA nautical chart for small boaters

When possible, use the full-size NOAA chart for navigation.



- Complete, reduced-scale nautical chart
- Print at home for free
- Convenient size
- Up-to-date with Notices to Mariners
- Compiled by NOAA's Office of Coast Survey, the nation's chartmaker



Published by the
National Oceanic and Atmospheric Administration
National Ocean Service
Office of Coast Survey
www.NauticalCharts.NOAA.gov
888-990-NOAA

What are Nautical Charts?

Nautical charts are a fundamental tool of marine navigation. They show water depths, obstructions, buoys, other aids to navigation, and much more. The information is shown in a way that promotes safe and efficient navigation. Chart carriage is mandatory on the commercial ships that carry America's commerce. They are also used on every Navy and Coast Guard ship, fishing and passenger vessels, and are widely carried by recreational boaters.

What is a BookletChart™?

This BookletChart is made to help recreational boaters locate themselves on the water. It has been reduced in scale for convenience, but otherwise contains all the information of the full-scale nautical chart. The bar scales have also been reduced, and are accurate when used to measure distances in this BookletChart. See the Note at the bottom of page 5 for the reduction in scale applied to this chart.

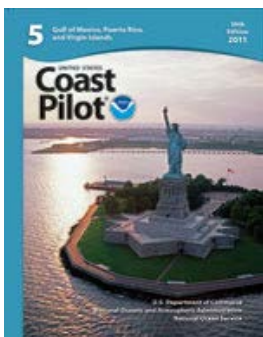
Whenever possible, use the official, full scale NOAA nautical chart for navigation. Nautical chart sales agents are listed on the Internet at <http://www.NauticalCharts.NOAA.gov>.

This BookletChart does NOT fulfill chart carriage requirements for regulated commercial vessels under Titles 33 and 44 of the Code of Federal Regulations.

Notice to Mariners Correction Status

This BookletChart has been updated for chart corrections published in the U.S. Coast Guard Local Notice to Mariners, the National Geospatial Intelligence Agency Weekly Notice to Mariners, and, where applicable, the Canadian Coast Guard Notice to Mariners. Additional chart corrections have been made by NOAA in advance of their publication in a Notice to Mariners. The last Notices to Mariners applied to this chart are listed in the Note at the bottom of page 7. Coast Pilot excerpts are not being corrected.

For latest Coast Pilot excerpt visit the Office of Coast Survey website at <http://www.nauticalcharts.noaa.gov/nsd/searchbychart.php?chart=11300>



[Selected Excerpts from Coast Pilot]

From San Luis Pass to the entrance to Matagorda Bay at Pass Cavallo, the coast trends for 80 miles in a general SW by W direction. From Pass Cavallo it curves gently SW for 100 miles to latitude 27°N., where the trend is S; thence it curves gently a little E of S for 58 miles to the mouth of the Rio Grande. Throughout its whole distance the coast encloses a chain of shallow bays or lagoons. These are separated from the Gulf by long, narrow islands and peninsulas

which are generally low and sandy, with few natural distinguishing marks. Some of the bays and lagoons may be entered from the Gulf

through dredged passes protected by jetties, and others through small passes partly obscured by bars with little depth on them.

Dangers.—The coast has fairly uniform depths with few outlying dangers except in the vicinity of the passes and off the mouth of the Brazos River where shoaling to 18 feet is reported as far as 5 miles offshore; otherwise, vessels of any draft can approach to within 2.5 miles of the shore. Other reported dangers are about 20 miles SW of the entrance to the Brazos River and consist of occasional ridges of soft mud having as little as 4 fathoms over them, with general surrounding depths of 5 to 5½ fathoms. Oil wells may be encountered offshore, especially in the vicinity of Freeport Harbor. Mariners are cautioned to give them a wide berth especially when drilling operations are in progress.

Caution.—Hurricane Beulah in September 1967 caused considerable damage in the Gulf Coast area. Mariners are advised to exercise extreme caution as depths may vary from those charted and mentioned in the Coast Pilot. In addition, Hurricane Beulah created many new cuts or passes through the beach. Many of these cuts were reported in the stretch of beach extending N from about 6 miles N of Port Mansfield Channel for a distance of 20 miles. These openings in the beach should not be used for navigation.

Currents.—Along the W side of the Gulf of Mexico between Tampico and Corpus Christi is a N flow which in the vicinity of the 100-fathom curve off the mouth of the Rio Grande has an average velocity of 0.5 knot. Strong currents caused by winds would be expected to set somewhat to the right of the wind direction or, near the coast, in a direction parallel to the shoreline, current velocities of 0.5 to 1 knot being produced by wind velocities of 20 to 40 miles per hour.

However, it has been reported that at times strong currents set W toward the coast and the possibility of being carried inshore by such currents should be guarded against. The grounding of a vessel at a location 9 miles SW of Aransas Pass was reported caused by strong W currents that accompanied winds from the N and NE.

Houston, the largest city in Texas, is at the head of Houston Ship Channel 22 miles above Galveston Bay and 44 miles from Galveston Entrance to the Gulf. The city is the principal distribution point for Texas and one of the main distribution points for the W and SW United States.

Freeport Harbor, lying 40 miles SW of Galveston entrance, is the harbor for the town of **Freeport**. The area is known locally as Brazosport. The principal industry is the Dow Chemical Corporation which operates two large plants.

Port Lavaca is a city on the W shore of Lavaca Bay in a fishing, farming, and industrial area.

Copano Bay, a NW extension of Aransas Bay, is used principally as a center for hunting and sport fishing.

Laguna Madre is a shallow body of water extending S from Corpus Christi Bay for a distance of 100 miles. Depths range from zero to 9 feet with reefs and mudflats throughout. The Intracoastal Waterway traverses Laguna Madre from Corpus Christi Bay to Port Isabel, TX (See chapter 12.) **Padre Island**, a low, barren, storm-swept strip of sand beach, separates Laguna Madre from the Gulf. Most of the Island is part of the **Padre Island National Seashore** and subject to the rules and regulations of the U.S. Department of Interior's National Park Service. A natural fishing reef is 1.5 miles offshore about 15.6 miles N of Port Mansfield jetties. Another natural fishing reef is 4.5 miles offshore about 11.2 miles N of the jetties.

U.S. Coast Guard Rescue Coordination Center 24 hour Regional Contact for Emergencies

RCC New Orleans

Commander
8th CG District (504) 589-6225
New Orleans, LA

Navigation Manager Regions



To make suggestions, ask questions, or report a problem with a chart, go to <https://www.nauticalcharts.noaa.gov/customer-service/assist/>

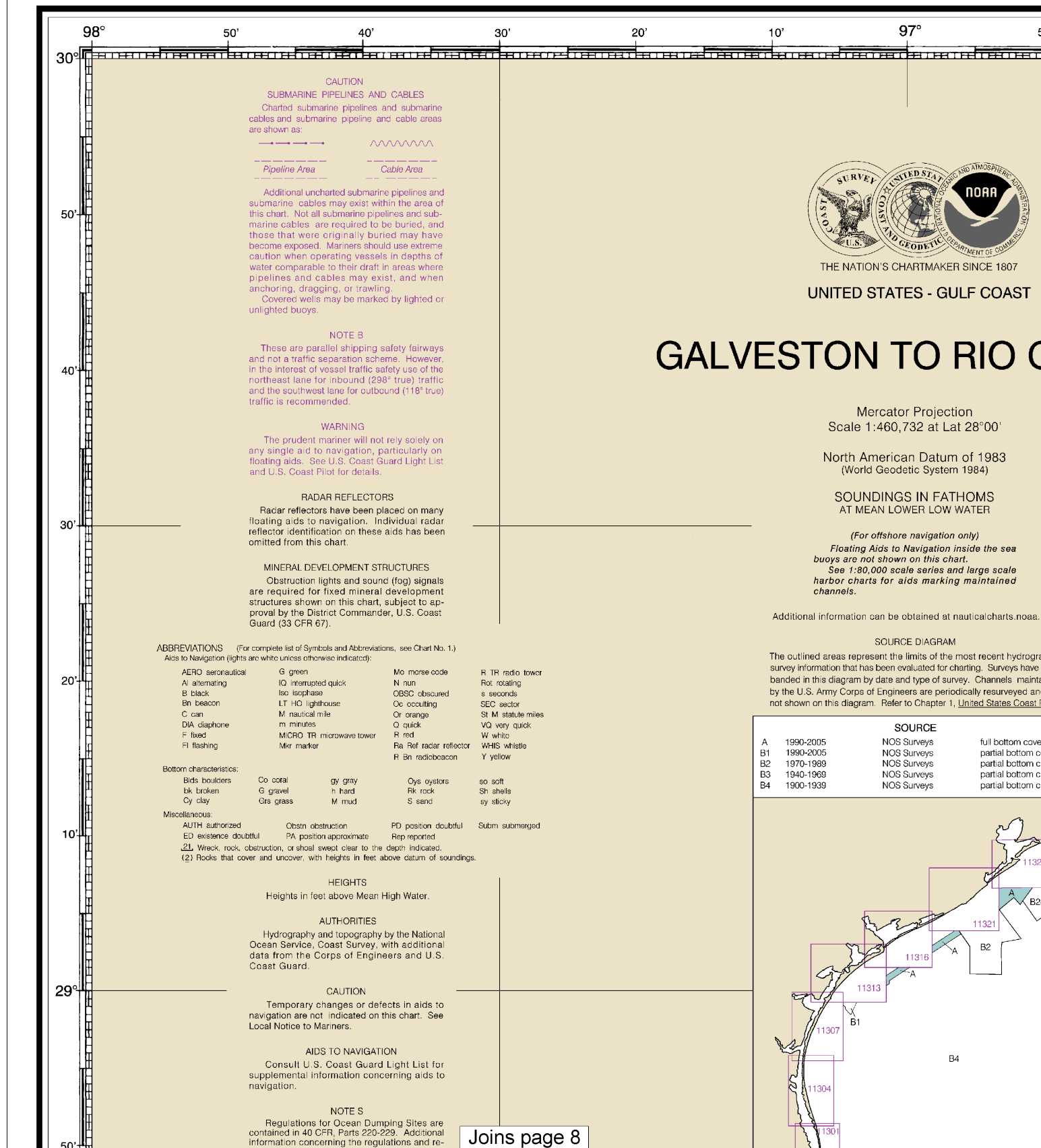
Lateral System As Seen Entering From Seaward

on navigable waters except Western Rivers



For more information on aids to navigation, including those on Western Rivers, please consult the latest USCG Light List for your area. These volumes are available online at <http://www.navcen.uscg.gov>

SOUNDINGS IN FATHOMS



Joins page 8

This nautical chart has been designed to promote safe navigation. The National Ocean Service encourages users to submit corrections, additions, or comments for improving this chart to the Chief, Marine Chart Division (N/CS2), National Ocean Service, NOAA, Silver Spring, Maryland 20910-3282.

Formerly C&GS 1117, 1st Ed., Mar. 1919 C-1919-192, KAPP 178



POLLUTION REPORTS

Report all spills of oil and hazardous substances to the National Response Center via 1-800-424-8802 (toll free), or to the nearest U.S. Coast Guard facility if telephone communication is impossible (33 CFR 153).

COPYRIGHT

No copyright is claimed by the United States Government under Title 17 U.S.C. However, other nations may claim intellectual property rights on the compilation of data depicting the foreign waters shown on this chart.

NOTE A

Navigation regulations are published in Chapter 2, U.S. Coast Pilot 5. Additions or revisions to Chapter 2 are published in the Notice to Mariners. Information concerning the regulations may be obtained at the Office of the Commander, 8th Coast Guard District in New Orleans, LA, or at the Office of the District Engineer, Corps of Engineers in Galveston, TX. Refer to charted regulation section numbers.

PRINT-ON-DEMAND CHARTS

NOAA and its partner, OceanGrafix, offer this chart updated weekly by NOAA for Notices to Mariners and critical corrections. Charts are printed when ordered using Print-on-Demand technology. New Editions are available 2-8 weeks before their release as traditional NOAA charts. Ask your chart agent about Print-on-Demand charts or contact NOAA at <http://ocsddata.nod.noaa.gov/ids/inquiry.aspx>, or OceanGrafix at 1-877-56CHART or <http://www.oceangrafix.com>.

NOTE X

Within the 12-nautical mile Territorial Sea, established by Presidential Proclamation, some Federal laws apply. The Three Nautical Mile Line, previously identified as the outer limit of the territorial sea, is retained as it continues to depict the jurisdiction limit of the other laws. The 9-nautical mile Natural Resource Boundary off the Gulf of Florida, Texas, and Puerto Rico, and the Three Nautical Mile Line elsewhere represent the most cases the inner limit of Federal fisheries jurisdiction and the outer limit of jurisdiction of the states. The 24-nautical mile Contiguous Zone and the 200-nautical mile Exclusive Economic Zone were established by Presidential Proclamation. Unless fixed by treaty or the U.S. Supreme Court, these maritime limits are subject to modification.

NOTE E

The U.S. Coast Guard operates a mandatory Vessel Traffic Services (VTS) on the Sabine-Neches Waterway and offshore approaches. Vessel operating procedures, mandatory participation boundaries, and designated radiotelephone frequencies are published in 33 CFR 161, the U.S. Coast Pilot, and the VTS Port Arthur User Manual. Mariners should consult these sources for applicable rules and reporting requirements. "Port Arthur Traffic" is a full service VTS, providing a continuous information service; Traffic Organization Services and Navigational Assistance Services as required.

GRANDE

a.gov.

graphic
ve been
ntained
and are
t Pilot.

verage
coverage
coverage
coverage
coverage

B3
30°
323

B3
30°

A
28°
30°
27°
30°

Garc

HORIZONTAL DATUM

The horizontal reference datum of this chart is North American Datum of 1983 (NAD 83), which for charting purposes is considered equivalent to the World Geodetic System of 1984 (WGS 84). Geographic positions referred to the North American Datum of 1927 do not require conversion to NAD 83 for plotting on this chart.

Joins page 9

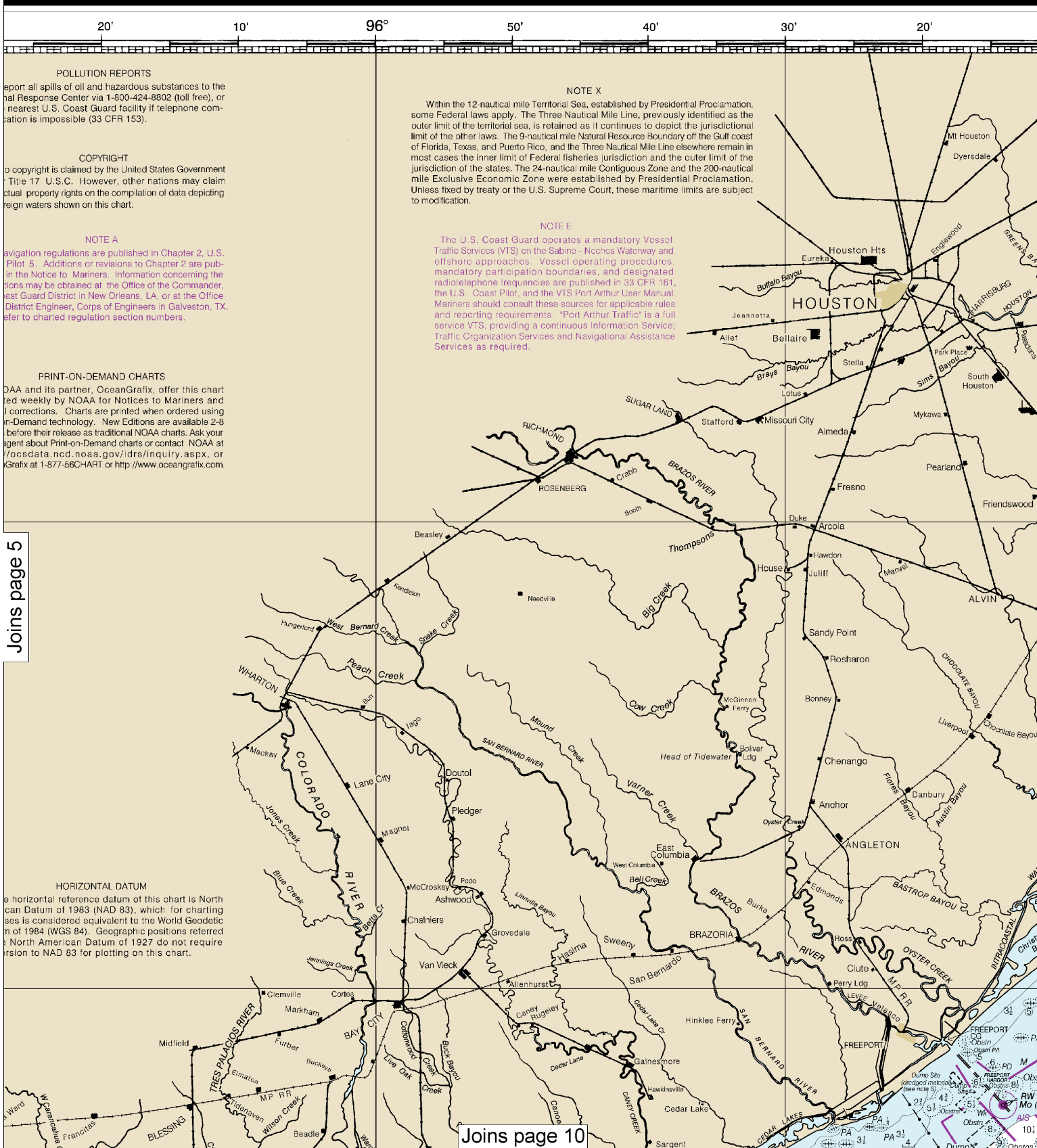
Joins page 6

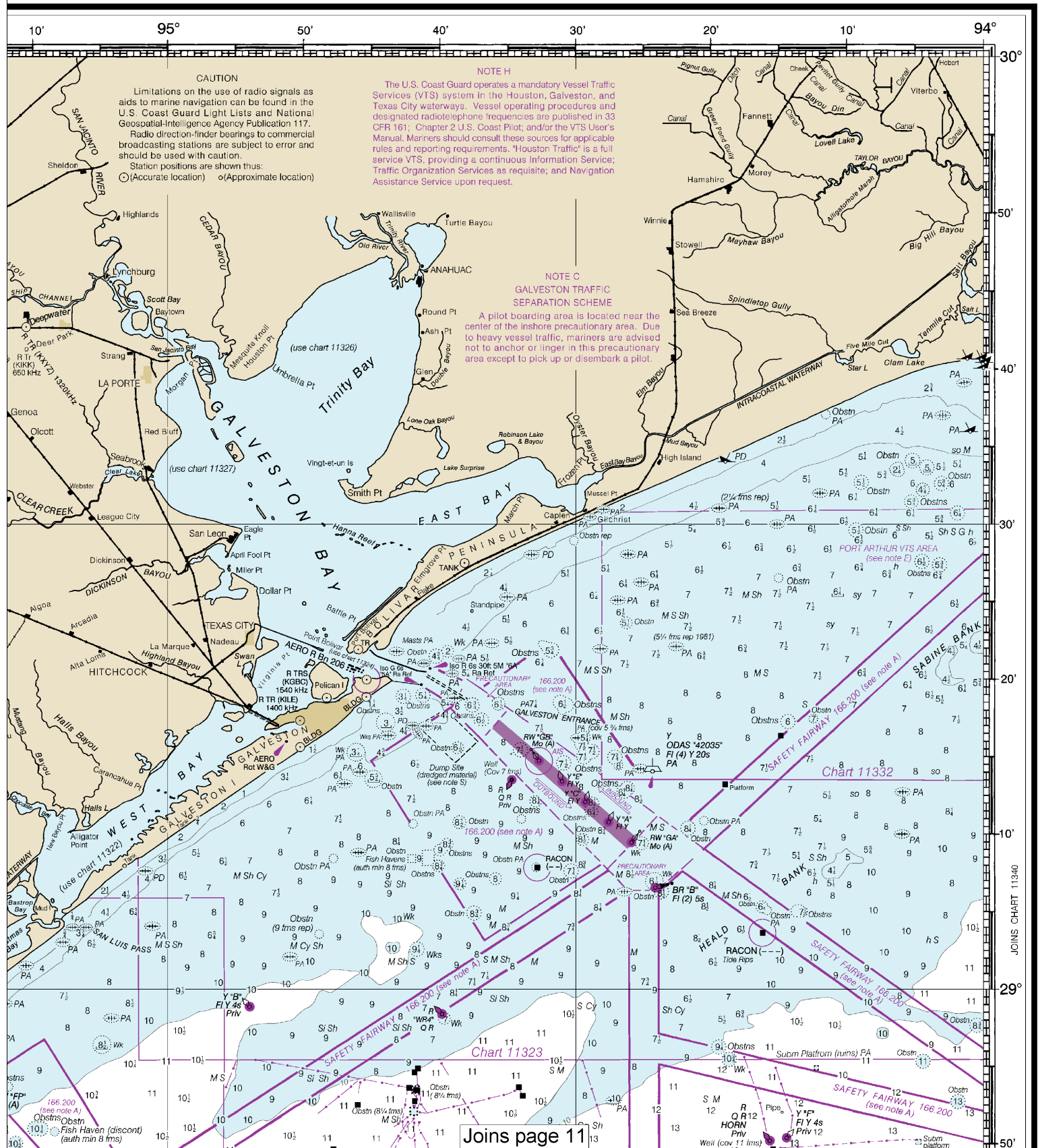
This BookletChart was reduced to 75% of the original chart scale. The new scale is 1:614309. Barscales have also been reduced and are accurate when used to measure distances in this BookletChart.

5

been designed to promote safe navigation. The National users to submit corrections, additions, or comments for Chief, Marine Chart Division (N/CS2), National Ocean ng, Maryland 20910-3282.

Formerly C&GS 1117, 1st Ed., Mar. 1919 C-1919-192, KAPP 178





Hydrography and topography by the National Ocean Service, Coast Survey, with additional data from the Corps of Engineers and U.S. Coast Guard.

Joins page 4

CAUTION

Temporary changes or defects in aids to navigation are not indicated on this chart. See Local Notice to Mariners.

AIDS TO NAVIGATION

Consult U.S. Coast Guard Light List for supplemental information concerning aids to navigation.

NOTES

Regulations for Ocean Dumping Sites are contained in 40 CFR, Parts 220-229. Additional information concerning the regulations and requirements for use of the sites may be obtained from the Environmental Protection Agency (EPA). See U.S. Coast Pilot's appendix for addresses of EPA offices. Dumping subsequent to the survey dates may have reduced the depths shown.

NOTE D

CAUTION

Unexploded ordnance is known to exist in this area. Ordnance removed from the ocean floor should be reported to the U.S. Coast Guard immediately for disposal instructions. See annual NM 1 (39).

HURRICANES AND TROPICAL STORMS

Hurricanes, tropical storms and other major storms may cause considerable damage to marine structures, aids to navigation and moored vessels, resulting in submerged debris in unknown locations.

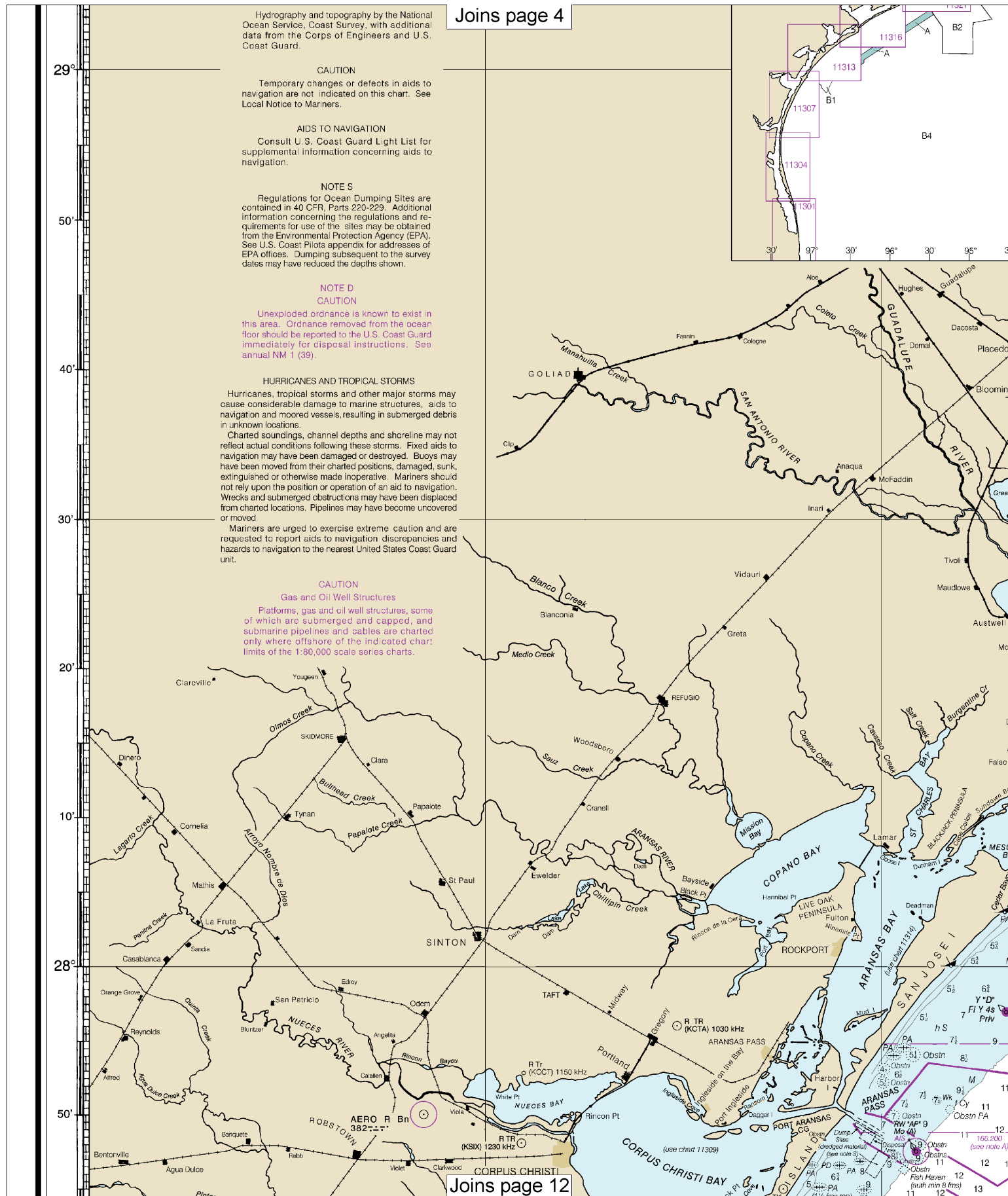
Charted soundings, channel depths and shoreline may not reflect actual conditions following these storms. Fixed aids to navigation may have been damaged or destroyed. Buoys may have been moved from their charted positions, damaged, sunk, extinguished or otherwise made inoperative. Mariners should not rely upon the position or operation of an aid to navigation. Wrecks and submerged obstructions may have been displaced from charted locations. Pipelines may have become uncovered or moved.

Mariners are urged to exercise extreme caution and are requested to report aids to navigation discrepancies and hazards to navigation to the nearest United States Coast Guard unit.

CAUTION

Gas and Oil Well Structures

Platforms, gas and oil well structures, some of which are submerged and capped, and submarine pipelines and cables are charted only where offshore of the indicated chart limits of the 1:80,000 scale series charts.



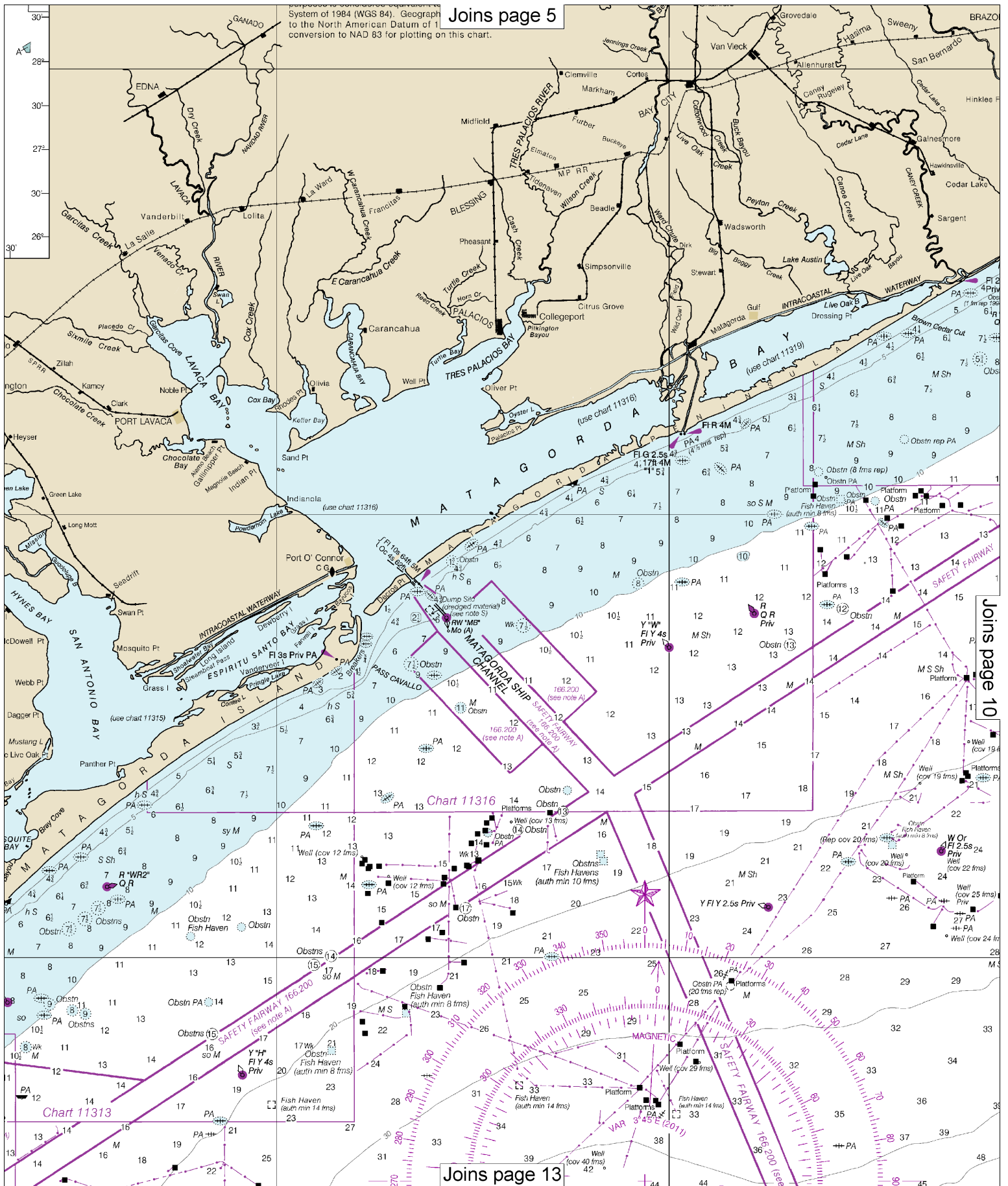
Joins page 12

8

Note: Chart grid lines are aligned with true north.

System of 1984 (WGS 84). Geograph to the North American Datum of 1 conversion to NAD 83 for plotting on this chart.

Joins page 5

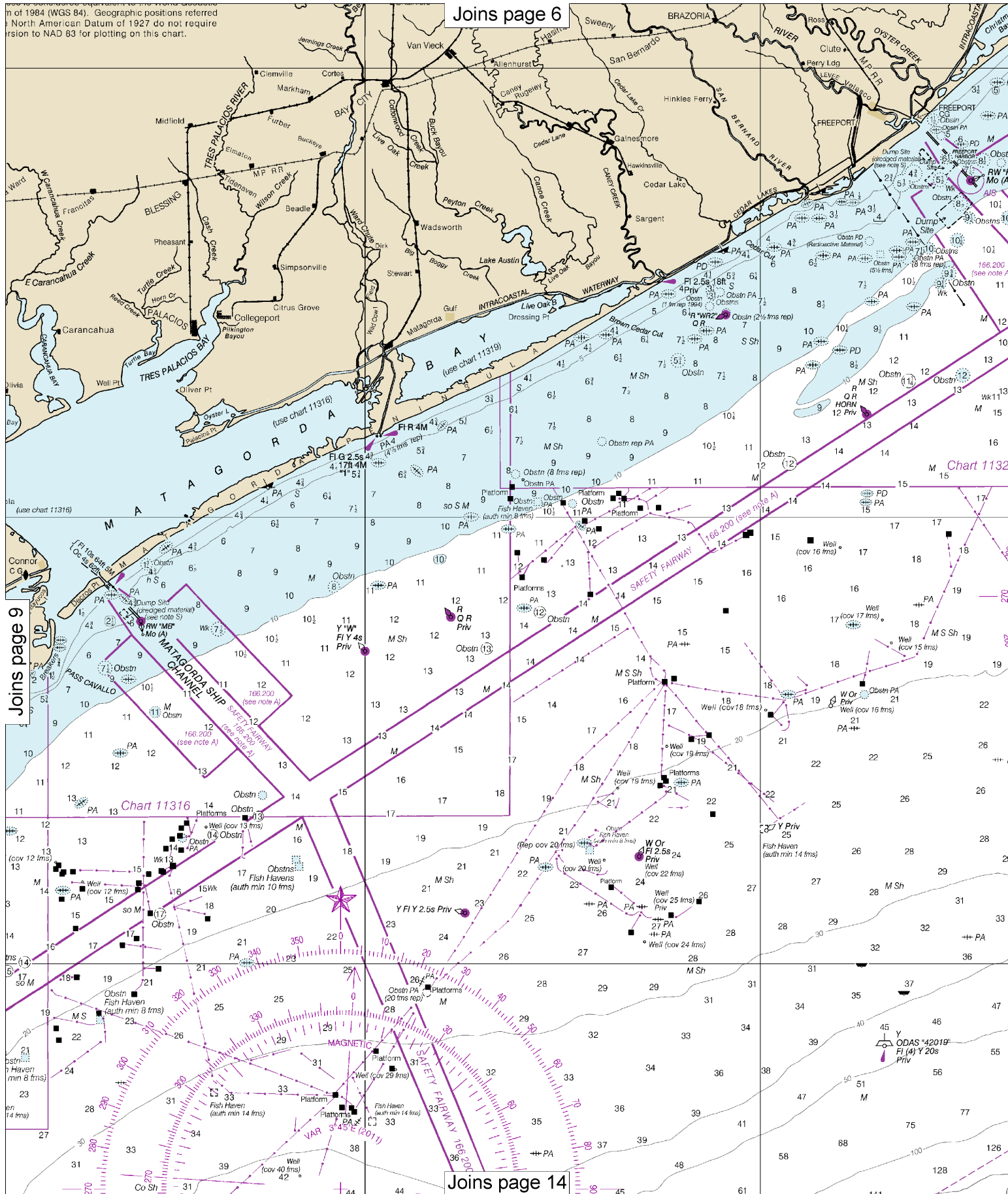


Joins page 10

Joins page 13

m of 1984 (WGS 84). Geographic positions referred to North American Datum of 1927 do not require revision to NAD 83 for plotting on this chart.

Joins page 6



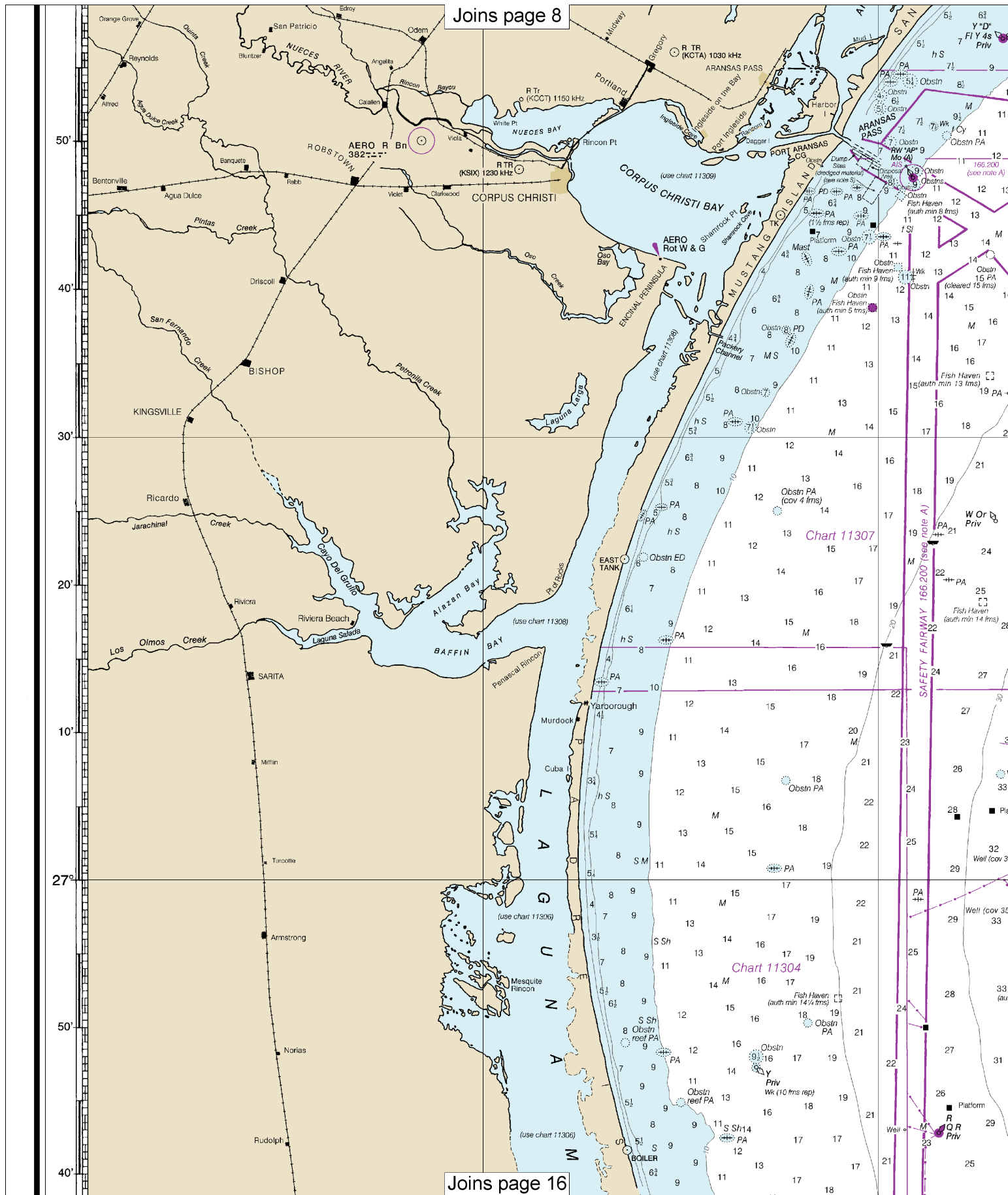
Joins page 9

Joins page 14

10

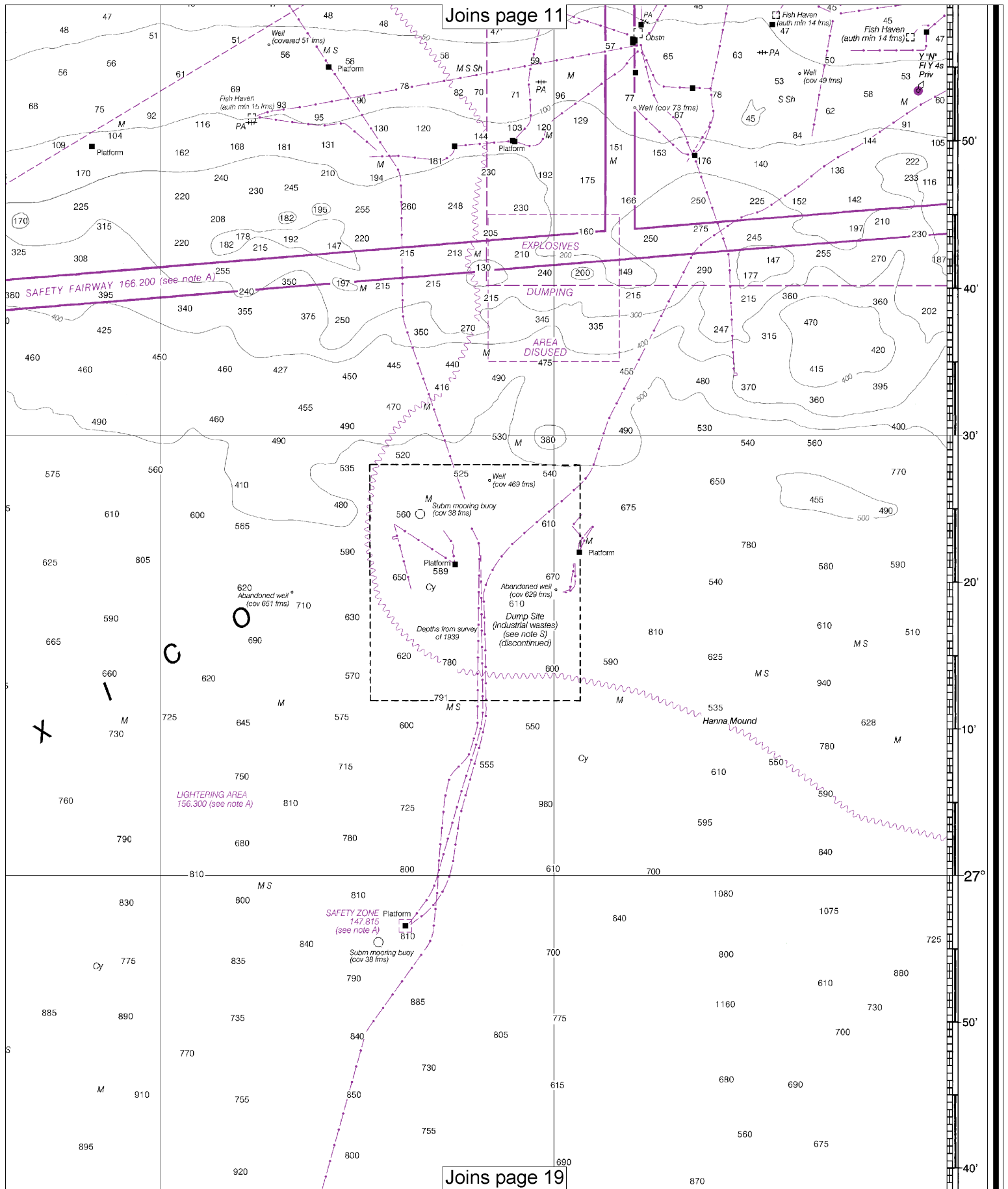
Note: Chart grid lines are aligned with true north.

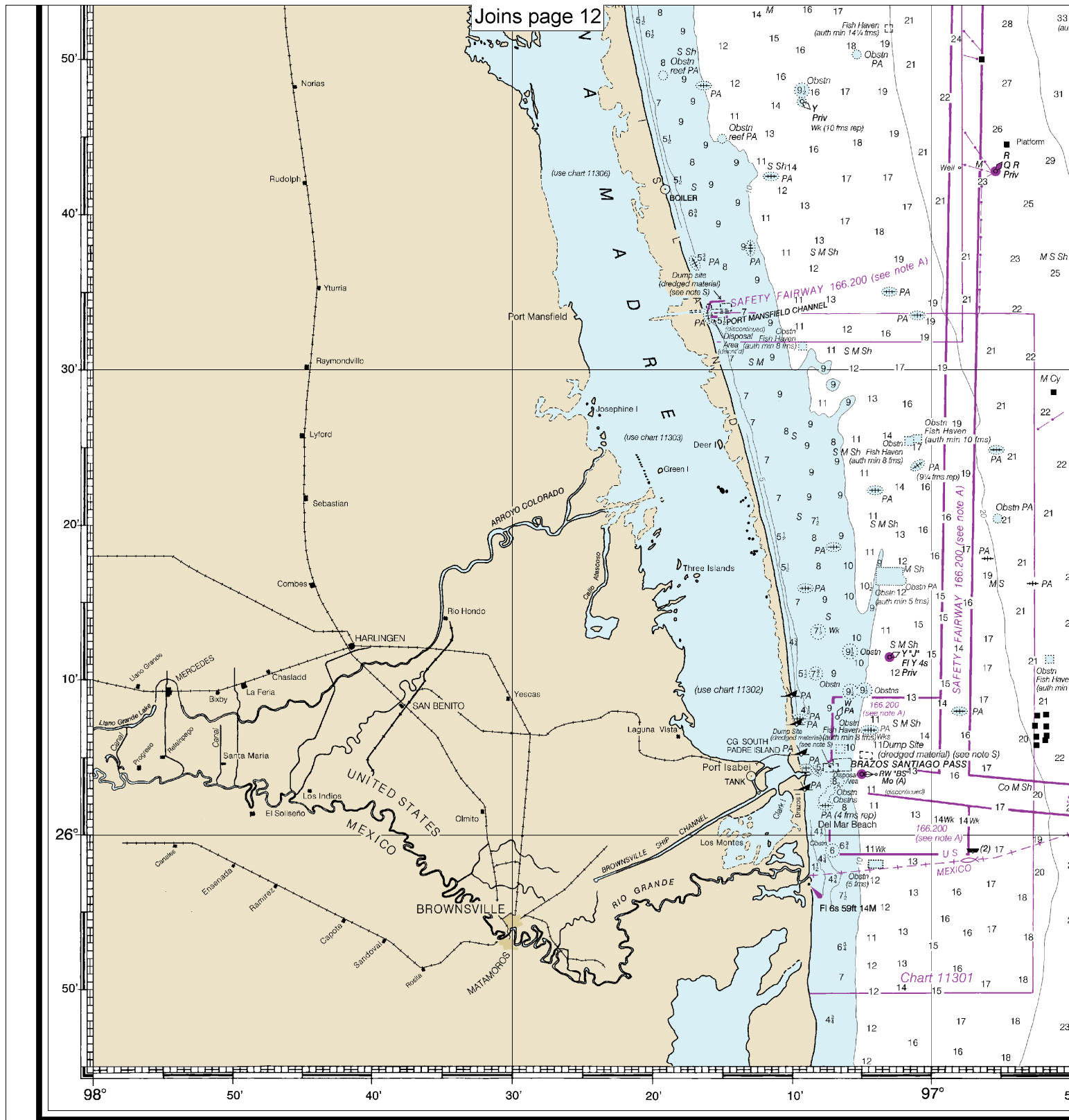




12

Note: Chart grid lines are aligned with true north.





CAUTION

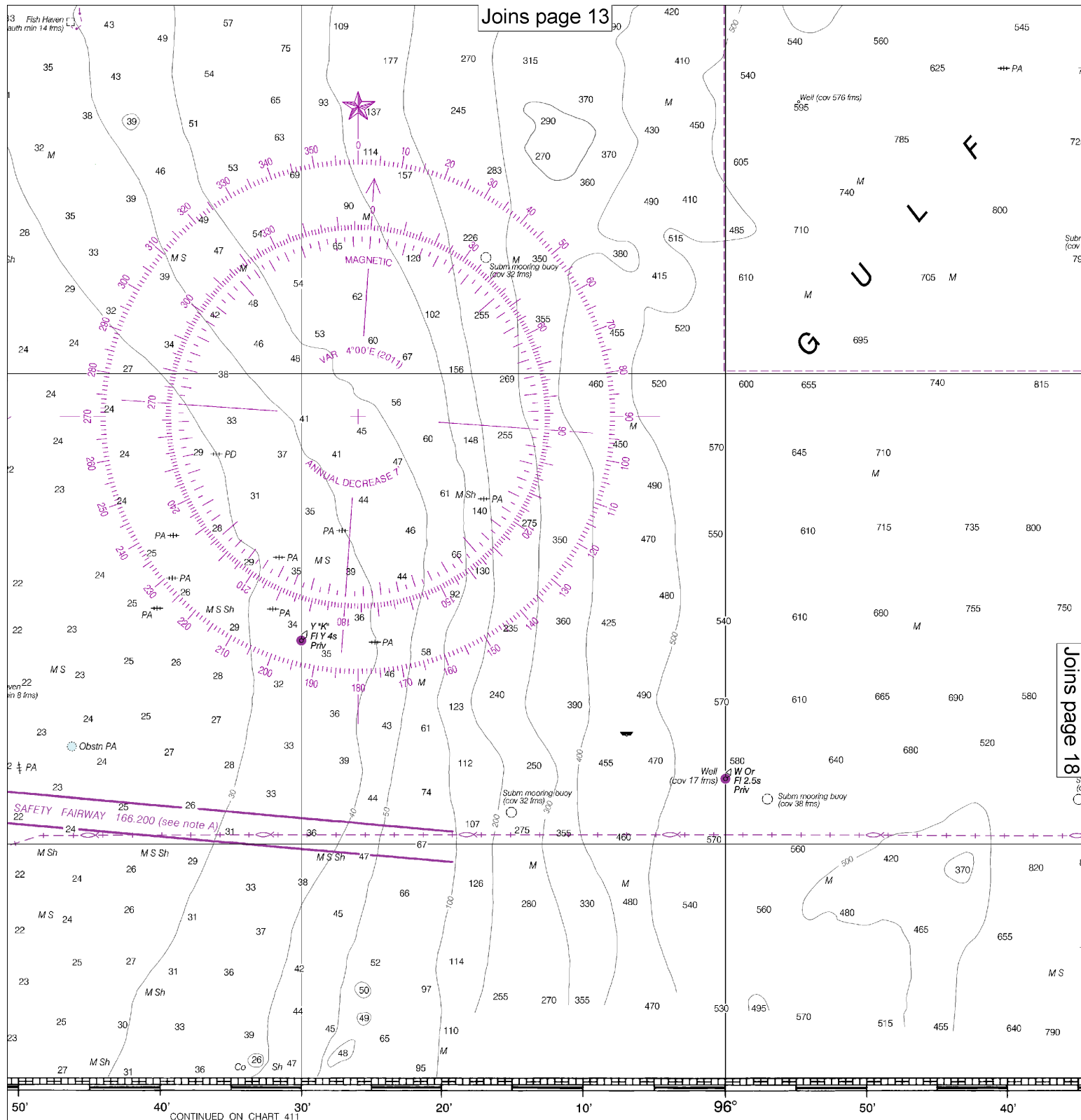
This chart has been corrected from the Notice to Mariners (NM) published weekly by the National Geospatial-Intelligence Agency and the Local Notice to Mariners (LNM) issued periodically by each U.S. Coast Guard district to the dates shown in the lower left hand corner. Chart updates corrected from Notice to Mariners published after the dates shown in the lower left hand corner are available at nauticalcharts.noaa.gov.

11300

This is the Last Edition of this chart. It will be canceled on Oct 2, 2024
45th Ed., Dec. 2019. Last Correction: 5/17/2024. Cleared through:
LNM: 2124 (5/21/2024), NM: 2224 (6/1/2024)

16

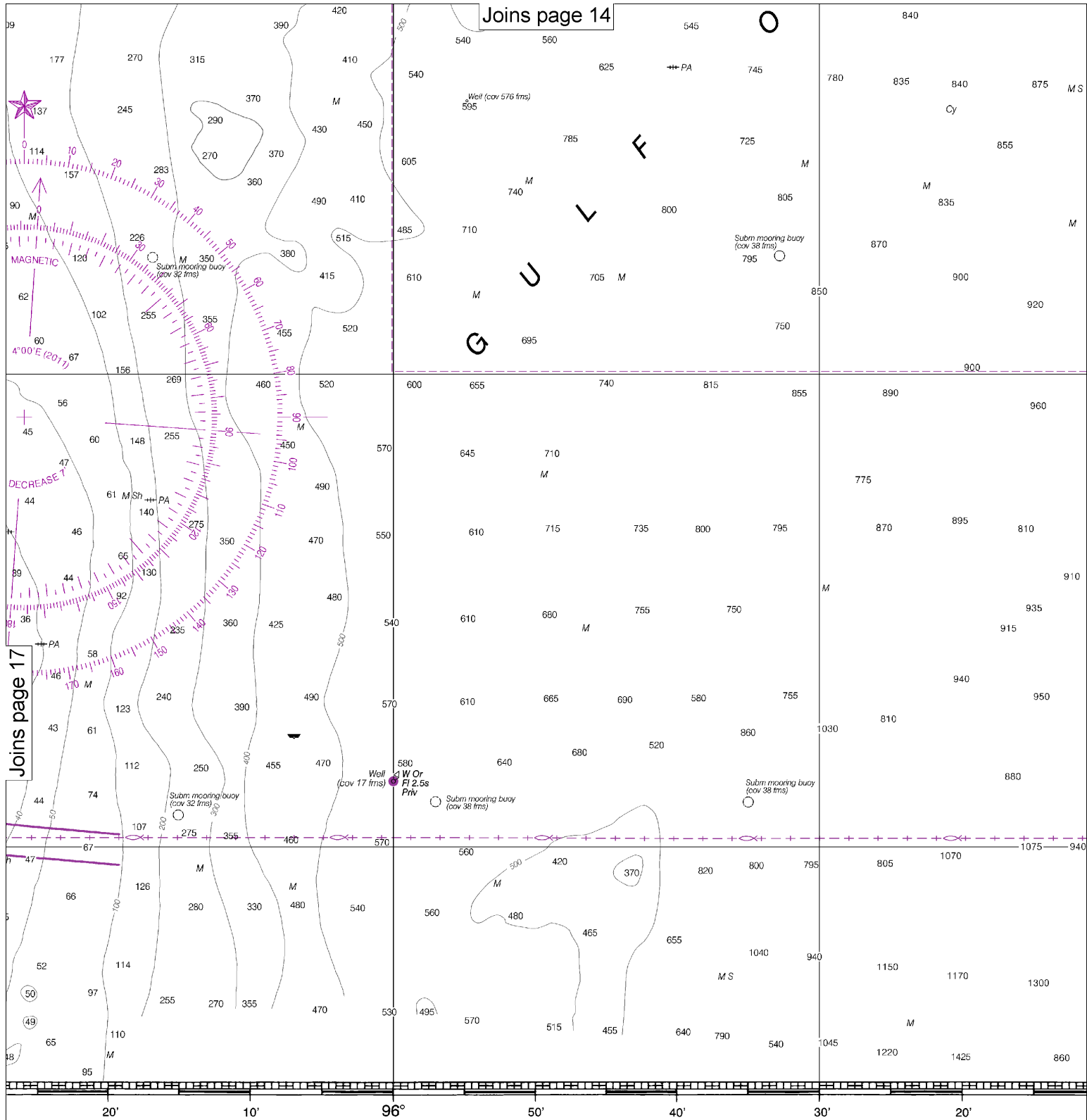
Note: Chart grid lines are aligned with true north.



SOUNDINGS IN FATHOMS

Published at Washington, D.C.
U.S. DEPARTMENT OF COMMERCE
NATIONAL OCEANIC AND ATMOSPHERIC ADMINISTRATION
NATIONAL OCEAN SERVICE
COAST SURVEY

Joins page 14



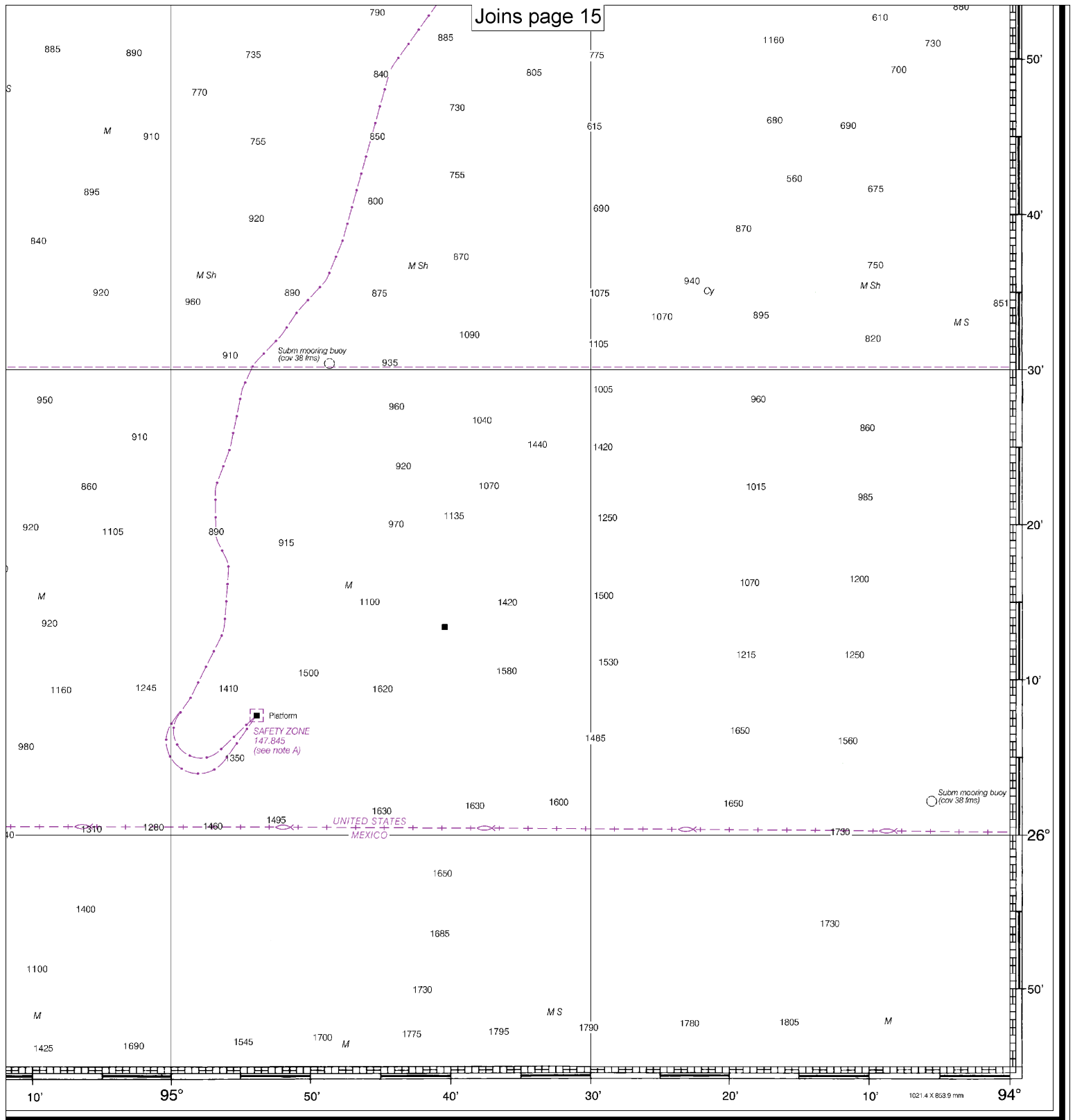
N FATHOMS

Published at Washington, D.C.
U.S. DEPARTMENT OF COMMERCE
NATIONAL OCEANIC AND ATMOSPHERIC ADMINISTRATION
NATIONAL OCEAN SERVICE
COAST SURVEY

FATHOMS	1 2
FEET	6 12
METERS	1 2 3

18

Note: Chart grid lines are aligned with true north.



2	3	4	5	6	7	8	9	10	11	12	13	14	15	16	17
2	18	24	30	36	42	48	54	60	66	72	78	84	90	96	102
4	5	6	7	8	9	10	11	12	13	14	15	16	17	18	19
20	21	22	23	24	25	26	27	28	29	30	31				

Galveston to Rio Grande
SOUNDINGS IN FATHOMS - SCALE 1:460,732

11300



VHF Marine Radio channels for use on the waterways:

Channel 6 – Inter-ship safety communications.

Channel 9 – Communications between boats and ship-to-coast.

Channel 13 – Navigation purposes at bridges, locks, and harbors.

Channel 16 – Emergency, distress and safety calls to Coast Guard and others, and to initiate calls to other

vessels. Contact the other vessel, agree to another channel, and then switch.

Channel 22A – Calls between the Coast Guard and the public. Severe weather warnings, hazards to navigation and safety warnings are broadcast here.

Channels 68, 69, 71, 72 and 78A – Recreational boat channels.

Getting and Giving Help — Signal other boaters using visual distress signals (flares, orange flag, lights, arm signals); whistles; horns; and on your VHF radio. You are required by law to help boaters in trouble. Respond to distress signals, but do not endanger yourself.



NOAA Weather Radio All Hazards (NWR) is a nationwide network of radio stations broadcasting continuous weather information directly from the nearest National Weather Service office. NWR broadcasts official Weather Service warnings, watches, forecasts and other hazard information 24 hours a day, 7 days a week.

<http://www.nws.noaa.gov/nwr/>

Distress Call Procedures

- Make sure radio is on.
- Select Channel 16.
- Press/Hold the transmit button.
- Clearly say: "MAYDAY, MAYDAY, MAYDAY."
- Also give: Vessel Name and/or Description; Position and/or Location; Nature of Emergency; Number of People on Board.
- Release transmit button.
- Wait for 10 seconds — If no response Repeat MAYDAY call.

HAVE ALL PERSONS PUT ON LIFE JACKETS!

Quick References

Nautical chart related products and information	—	http://www.nauticalcharts.noaa.gov
Interactive chart catalog	—	http://www.charts.noaa.gov/InteractiveCatalog/nrnc.shtml
Report a chart discrepancy	—	http://ocsddata.ncd.noaa.gov/idrs/discrepancy.aspx
Chart and chart related inquiries and comments	—	http://ocsddata.ncd.noaa.gov/idrs/inquiry.aspx?frompage=ContactUs
Chart updates (LNM and NM corrections)	—	http://www.nauticalcharts.noaa.gov/mcd/updates/LNM_NM.html
Coast Pilot online	—	http://www.nauticalcharts.noaa.gov/nsd/cpdownload.htm
Tides and Currents	—	http://tidesandcurrents.noaa.gov
Marine Forecasts	—	http://www.nws.noaa.gov/om/marine/home.htm
National Data Buoy Center	—	http://www.ndbc.noaa.gov/
NowCoast web portal for coastal conditions	—	http://www.nowcoast.noaa.gov/
National Weather Service	—	http://www.weather.gov/
National Hurricane Center	—	http://www.nhc.noaa.gov/
Pacific Tsunami Warning Center	—	http://ptwc.weather.gov/
Contact Us	—	http://www.nauticalcharts.noaa.gov/staff/contact.htm



— For the latest news from Coast Survey, follow **@NOAAcharts**



This Booklet chart has been designed for duplex printing (printed on front and back of one sheet). If a duplex option is not available on your printer, you may print each sheet and arrange them back-to-back to allow for the proper layout when viewing.