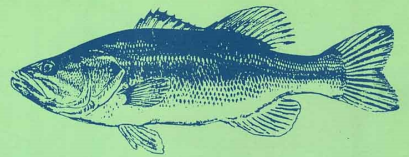


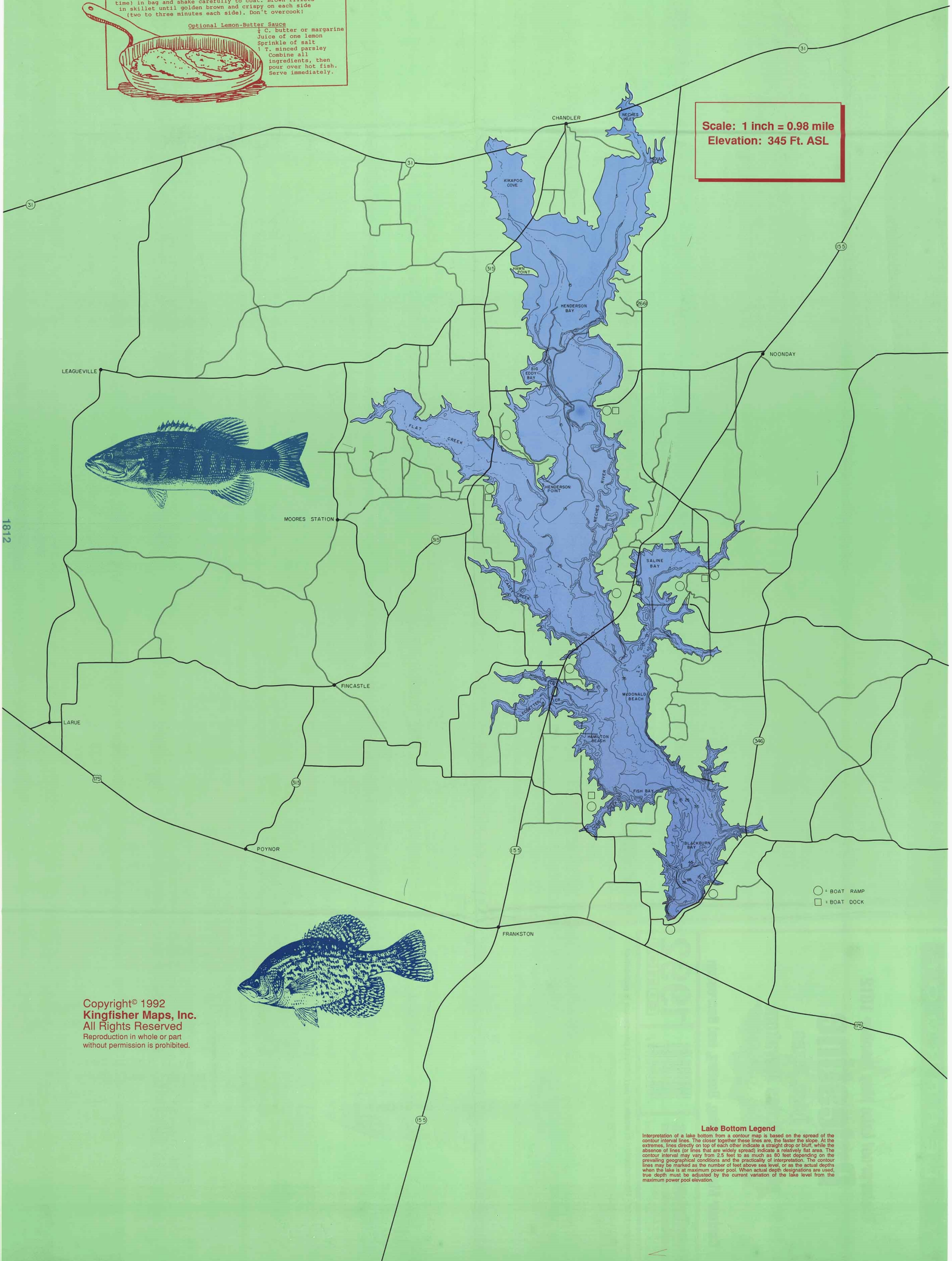
2 T. cooking oil
2 T. butter or margarine
Heat in skillet just until bubbly.

Optional Lemon-Butter Sauce

Hot Sauce
 1/2 C. butter or margarine
 Juice of one lemon
 Sprinkle of salt
 1 T. minced parsley
 Combine all
 ingredients, then
 pour over hot fish.
 Serve immediately.



Scale: 1 inch = 0.98 mile
Elevation: 345 Ft. ASL



Copyright© 1992
Kingfisher Maps, Inc.
All Rights Reserved
Reproduction in whole or part
without permission is prohibited.

Lake Bottom Legend

Lake Bottom Legend