



NORTH

LAKE LEVEL
1020 FT. ABOVE
SEA LEVEL

SCALE
1 INCH = .76 MILES

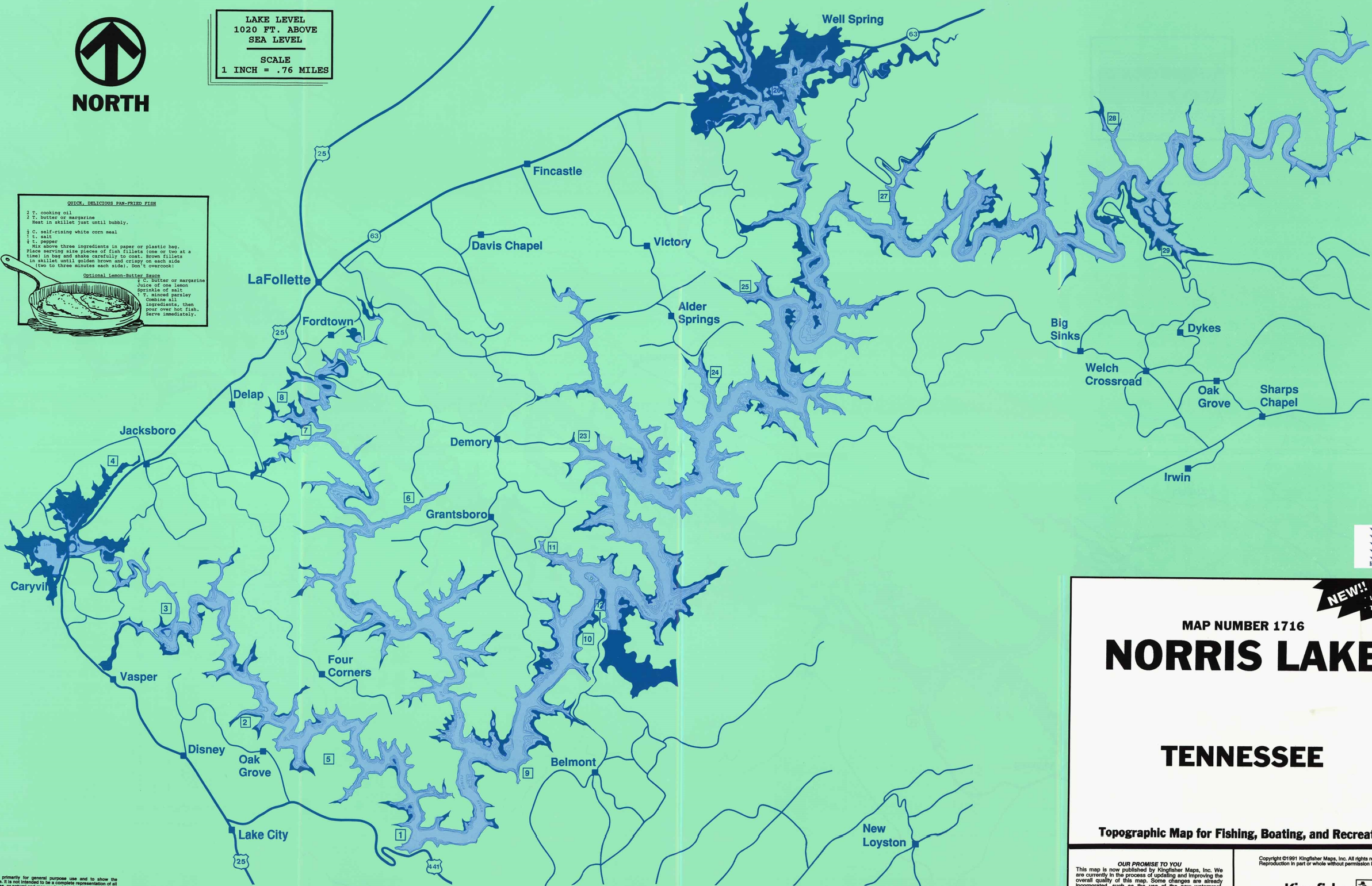
QUICK, DELICIOUS PAN-FRIED FISH

2 T. cooking oil
2 T. butter or margarine
Heat in skillet just until bubbly.

1 C. self-rising white corn meal
1 t. salt
1 t. pepper
Mix above three ingredients in paper or plastic bag.
Place serving size pieces of fish fillets (one or two at a time) in bag and shake carefully to coat. Brown fillets in skillet until golden brown and crispy on each side (two to three minutes each side). Don't overcook!

Optional Lemon-Butter Sauce

1 C. butter or margarine
Juice of one lemon
Sprinkle of salt
1 T. minced parsley
Combine all ingredients, then pour over hot fish. Serve immediately.



NEW!!

• WATERPROOF
• TEARPROOF

MAP NUMBER 1716

NORRIS LAKE

TENNESSEE

Topographic Map for Fishing, Boating, and Recreation

This map is intended primarily for general purpose use and to show the configuration of the lake. It is not intended to be a complete representation of all features, public use areas, or natural and man-made obstacles. Navigational aids are shown in approximate locations for reference only. Depth and/or contour lines (when shown) are based on pre-instrument survey data and are noted as normal pool elevations. All are subject to change when the lake level fluctuates. Any information shown relating to access areas (public, private, or marine) should be used as a guide only to possible services provided, and is neither an advertisement for, or endorsement of, the establishment or park. Kingfisher Maps, Inc. expressly disclaims all liability for damages resulting from total reliance on this map or the representations hereon.

OUR PROMISE TO YOU

This map is now published by Kingfisher Maps, Inc. We are currently in the process of updating and improving the overall quality of this map. Some changes are already incorporated, such as the use of the new waterproof, tearproof material it is printed on. More improvements are being incorporated with each printing. We promise you superior quality, prompt and friendly service, and lasting value. You may direct your ideas, suggestions, or comments by calling 800 865-5640. Thank you!

Copyright ©1991 Kingfisher Maps, Inc. All rights reserved. Reproduction in part or whole without permission is prohibited.

Kingfisher

Kingfisher Maps, Incorporated
213 North First Street
Post Office Box 1604
Seneca, South Carolina 29679