[illegible][illegible]

(+) Denotes Hours Later
(-) Denotes Hours Earlier
Facilities are shown on the map by large
black numbers highlighted with a yellow circle

WATERPROOF CHART

INTRACOASTAL WATERWAY

RECREATIONAL BOATING & FISHING
CHART NO. 19

**ST. SIMON'S SOUND, GEORGIA, TO
ST. AUGUSTINE (TOLOMATO RIVER), FLORIDA**

This chart is an authorized photographic reproduction by Kingfisher Maps, Inc. of portions of N.O.A.A. Chart No. 11489, Edition No. 25 corrected to January 21, 1989. It is intended to be used as a supplement to current government charts and publications.

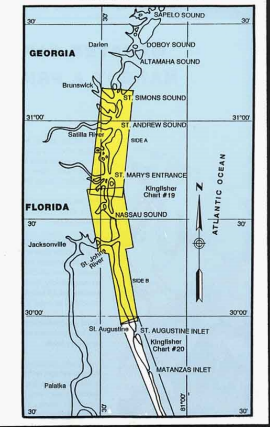
Kingfisher Maps Inc.
110 Liberty Drive #100
Clemson, SC 29631
(864) 654-2207
(800) 326-0257



This map is protected by United States copyright law! Reproduction in part or whole without permission is prohibited.



NAUTICAL CHART DIAGRAM



DISTANCES

The Waterway is indicated by a red line. Mileage distances along the Waterway are in Statute Miles, southward from Norfolk, Virginia. Tables for converting Statute Miles to International Nautical Miles are given in US Coast Pilot 4.

INTRACOASTAL WATERWAY

Project Depths
12 feet Norfolk, VA to Fort Pierce, FL; 10 feet Fort
Pierce, FL to Miami, FL; 7 feet Miami, FL to Cross
Bank, Florida Bay.

The controlling depths are published periodically in the US Coast Guard Local Notice to Mariners.

INTRACOASTAL WATERWAY AIDS

Intracoastal Waterway aids are characterized by a yellow strip. Proceeding from Norfolk, VA, to Key West, FL:

1. Aids with red reflectors are on the starboard side; green reflectors are on the port side.
2. Where the Intracoastal Waterway coincides with another waterway, the dual purpose aids have distinctive yellow triangles on the starboard side and yellow squares on the port side.