

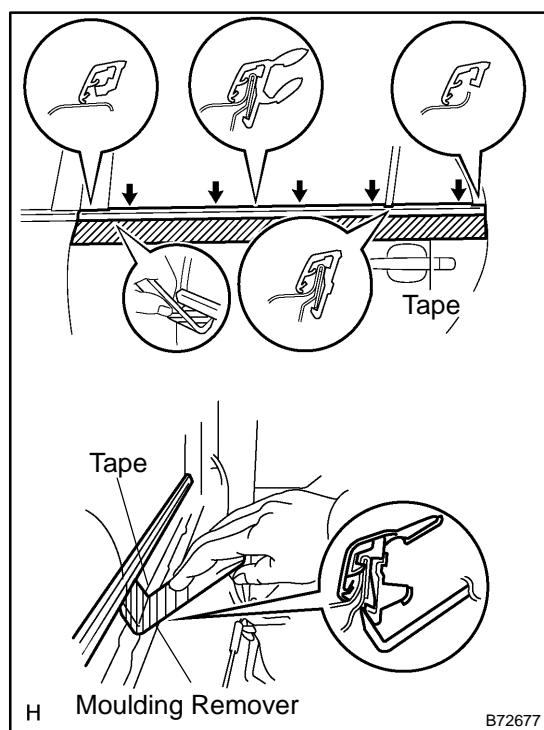
REAR DOOR BELT MOULDING ASSY LH

REPLACEMENT

76015-02

HINT:

- The installation procedures are the removal procedures in reverse order.
 - Use the same procedures for the RH side and LH side.
1. **REMOVE REAR ARMREST ASSY LH** (See page 75-20)
 2. **REMOVE POWER WINDOW REGULATOR SWITCH ASSY REAR (W/ POWER WINDOW)**
(See page 75-20)
 3. **REMOVE REAR DOOR WINDOW REGULATOR HANDLE ASSY (W/O POWER WINDOW)**
(See page 75-20)
 4. **REMOVE REAR DOOR TRIM BOARD SUB-ASSY LH** (See page 75-20)



5. REMOVE REAR DOOR BELT MOULDING ASSY LH

- (a) Put protective tape under the weatherstrip.
- (b) Using a moulding remover, pry out the weatherstrip as shown in the illustration.

HINT:

Tape the moulding remover tip before use.