

ALL DOOR LOCK AND UNLOCK DO NOT OPERATE BY THE MASTER SWITCH OR THE DRIVER'S DOOR KEY

CIRCUIT DESCRIPTION

The integration relay receives a switch signal from the master switch, door lock control switch or the driver's door key and then drives the door lock motor.

D10*2, D11*1
Power Window Regulator
Master Switch Assy
(Door Look Control Switch)

D12
Door Lock Control Switch Assy
(Passenger's Side)

D8
Front Door Lock Assy LH

D9
Front Door Lock Assy RH

D14
Rear Door Lock Assy RH

D13
Rear Door Lock Assy LH

Center J/B

Instrument Panel J/B

I11
Integration Relay

J6 J/C
J7 J/C

IE
IG

*1: w/ Power Window
*2: w/o Power Window

INSPECTION PROCEDURE

1 CHECK DOOR LOCK

- (a) When the door does not operate manually, proceed to "A".
 (b) When the door does not operate via the key, proceed to "B".

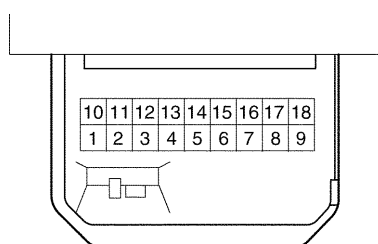
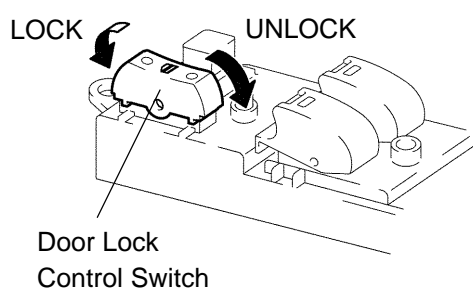
B

Go to step 4

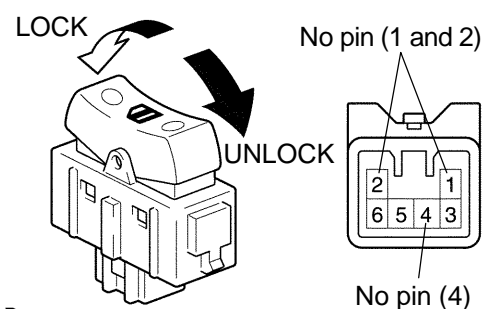
A

2 INSPECT DOOR LOCK CONTROL SWITCH

w/ Power Window



w/o Power Window



B59539
B59538

B59540

- (a) w/ Power window:
 Remove the power window regulator master switch assy.
 (1) Inspect the master switch (door lock control switch) continuity, as shown in the illustration and table.

Standard:

Switch position	Terminal No.	Specified condition
Lock	1 ↔ 3 ↔ 5	Continuity
OFF	–	–
Unlock	1 ↔ 3 ↔ 8	Continuity

- (b) w/o Power window:
 Remove the door lock control switch.
 (1) Inspect the door lock control switch continuity, as shown in the illustration and table.

Standard:

Switch position	Terminal No.	Specified condition
Lock	3 ↔ 6	Continuity
OFF	–	–
Unlock	3 ↔ 5	Continuity

NG

REPLACE POWER WINDOW REGULATOR MASTER SWITCH ASSY (W/ POWER WINDOW)

NG

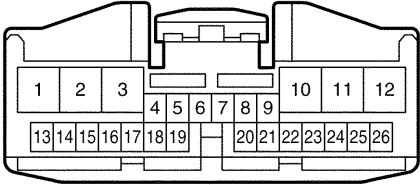
REPLACE DOOR LOCK CONTROL SWITCH (W/O POWER WINDOW)

OK

3 CHECK WIRE HARNESS (SWITCH ⇔ INTEGRATION RELAY)

Integration Relay (Instrument Panel J/B)
(Wire Harness Side)

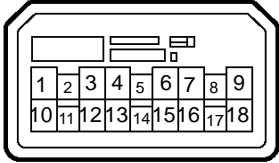
I11



P

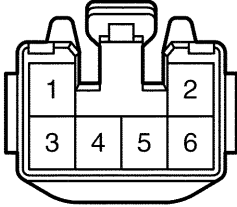
w/ Power Window
Master Switch (Wire Harness Side)

D11



w/o Power Window
Door Lock Control Switch
(Wire Harness Side)

D10



B59533

- (a) w/ Power window:
Disconnect the power window regulator master switch assy and integration relay connectors.
w/o Power window:
Disconnect the door lock control switch and integration relay connectors.
- (b) Check the continuity between the terminals of the power window regulator master switch assy or door lock control switch and integration relay connectors, as shown in the illustration and tables.

[w/ Power Window]
Standard (Check for open):

Symbols (Terminal No.) (Master switch ⇔ Integration relay)	Specified condition
L (D11-5) ⇔ L1 (I11-9)	Continuity
UL (D11-8) ⇔ UL1 (I11-8)	
E (D11-1) ⇔ Body ground	
E (D11-3) ⇔ Body ground	

[w/o Power Window]
Standard (Check for open):

Symbols (Terminal No.) (Door lock control switch ⇔ Integration relay)	Specified condition
L (D10-6) ⇔ L1 (I11-9)	Continuity
UL (D10-5) ⇔ UL1 (I11-8)	
E (D10-3) ⇔ Body ground	

OK

REPLACE INTEGRATION RELAY

NG

REPAIR OR REPLACE WIRE HARNESS AND CONNECTOR

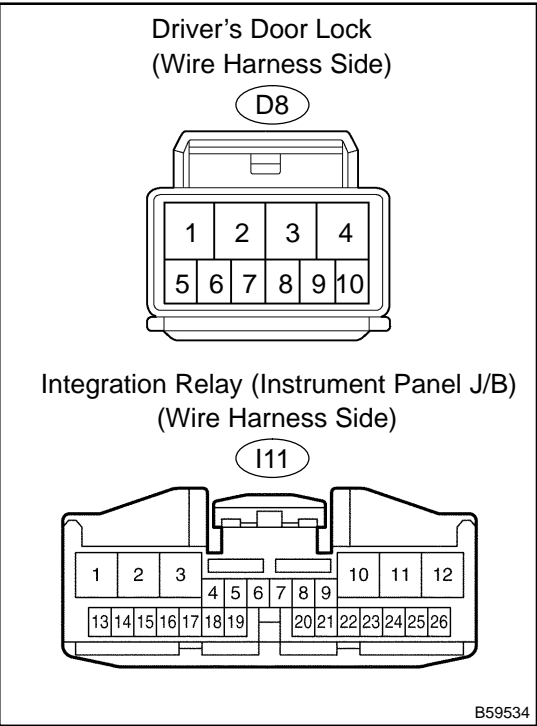
4 INSPECT DRIVER'S DOOR LOCK (See page 73-3)

- (a) Inspect the driver's door lock key switch.
- (b) Inspect the driver's door lock position switch.

NG **REPLACE DRIVER'S DOOR LOCK**

OK

5 CHECK WIRE HARNESS (DRIVER'S DOOR LOCK ⇔ INTEGRATION RELAY)



- (a) Disconnect the driver's door lock and integration relay connectors.
- (b) Check the continuity between the terminals of the driver's door lock and integration relay connectors, as shown in the illustration and table.

Standard (Check for open):

Symbols (Terminal No.) (Driver's door lock ⇔ Integration relay)	Specified condition
(D8-9) ⇔ L2 (I11-7)	Continuity
(D8-10) ⇔ UL3 (I11-6)	
(D8-8) ⇔ LSWD (I11-19)	
(D8-7) ⇔ Body ground	

NG **REPAIR OR REPLACE WIRE HARNESS AND CONNECTOR**

OK

REPLACE INTEGRATION RELAY