

# How to adjust power output

**If you find the Power is too low when you transmitting on [Low power output mode], the following steps can solve that problem.**

**Step1** Install TD-H8\_TXPOWER\_TUNE\_setup221103



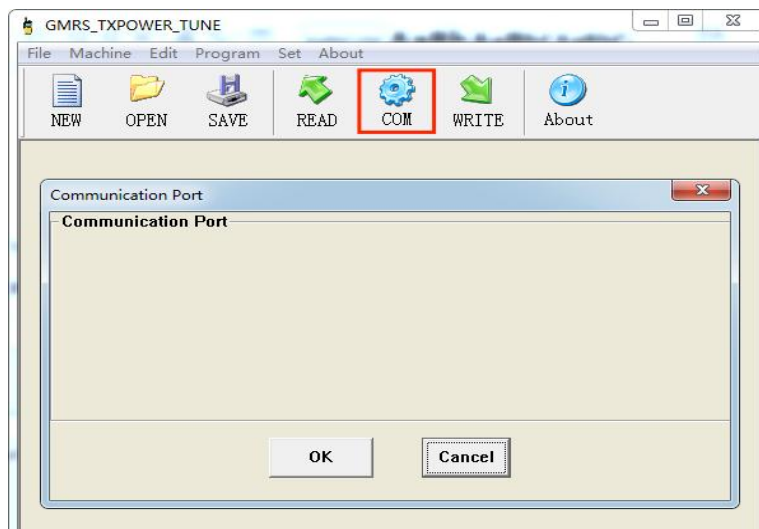
TD-H8\_TXP  
OWER\_TUN  
E\_setup221  
103

**Step2** Open TD-H8\_TXPOWER\_TUNE



TD-H8\_TXP  
OWER\_TUN  
E

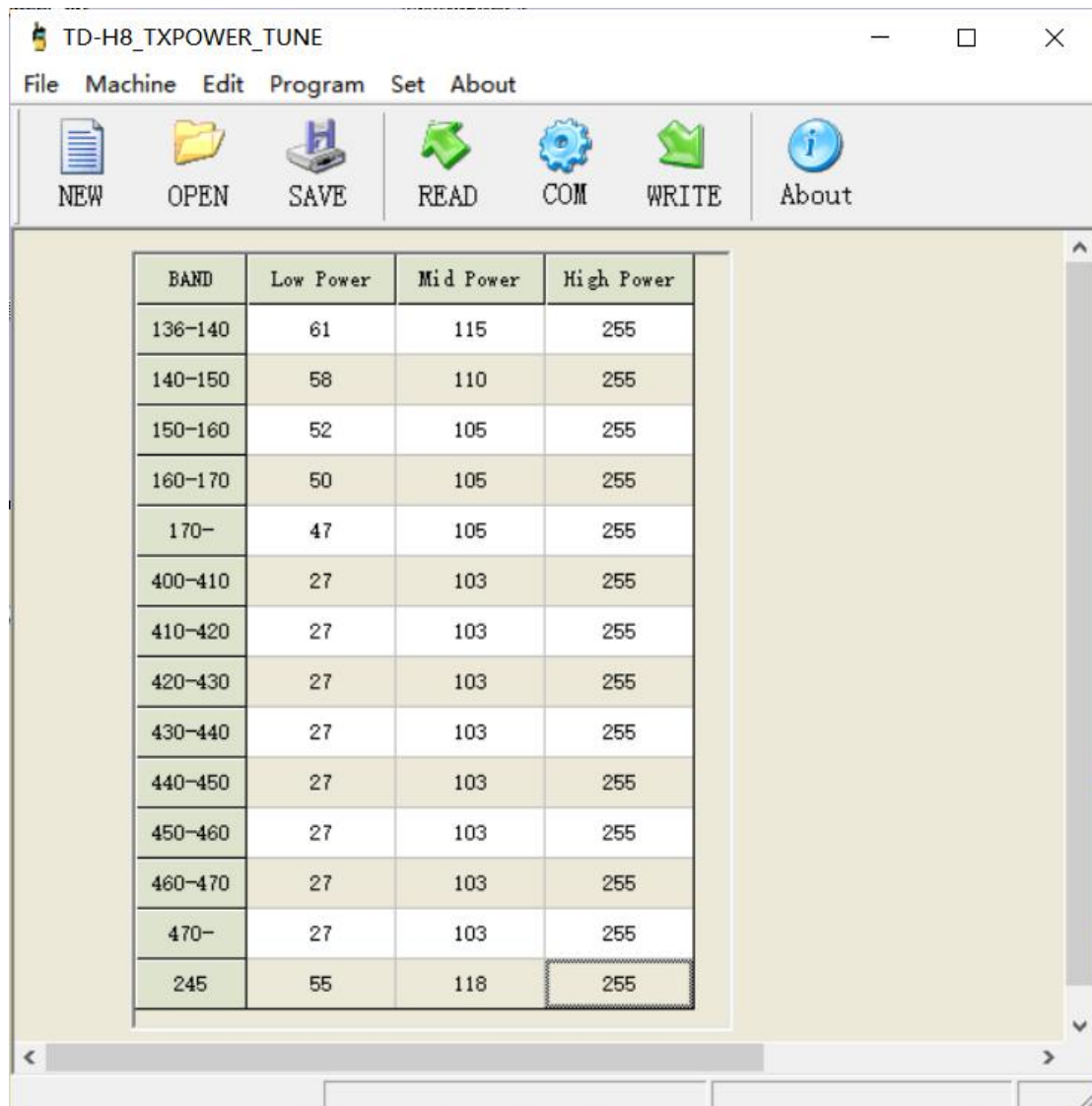
**Step3** Connect your radio with a **programming cable**, choice **corresponding port.**



**Step4** Click [WRITE]

\*The value of [Low Power] and [High Power] are default values that we recommend\*

If you find that the output power is still too low after adjustment, you can find the correct value by **adding or reducing 1** each time.



***Please feel free to contact us if you encounter other problem***

***Customer Support: support@tidradio.com***