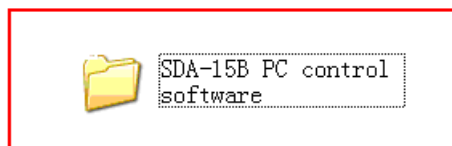


SDA-15B Software operation Instruction

1. Install, connect and execute the software

- 1) Save the following file to the compute that connects SDA-15B



- 2) Connect the PC control port in SDA-15B to Computer USB port through the USB line(male to male), now the computer will recognize and connect to the SDA15B transmitter.

Attention: If the compute can't recognize SDA-15B transmitter, please install the program "PC control USB Drive"

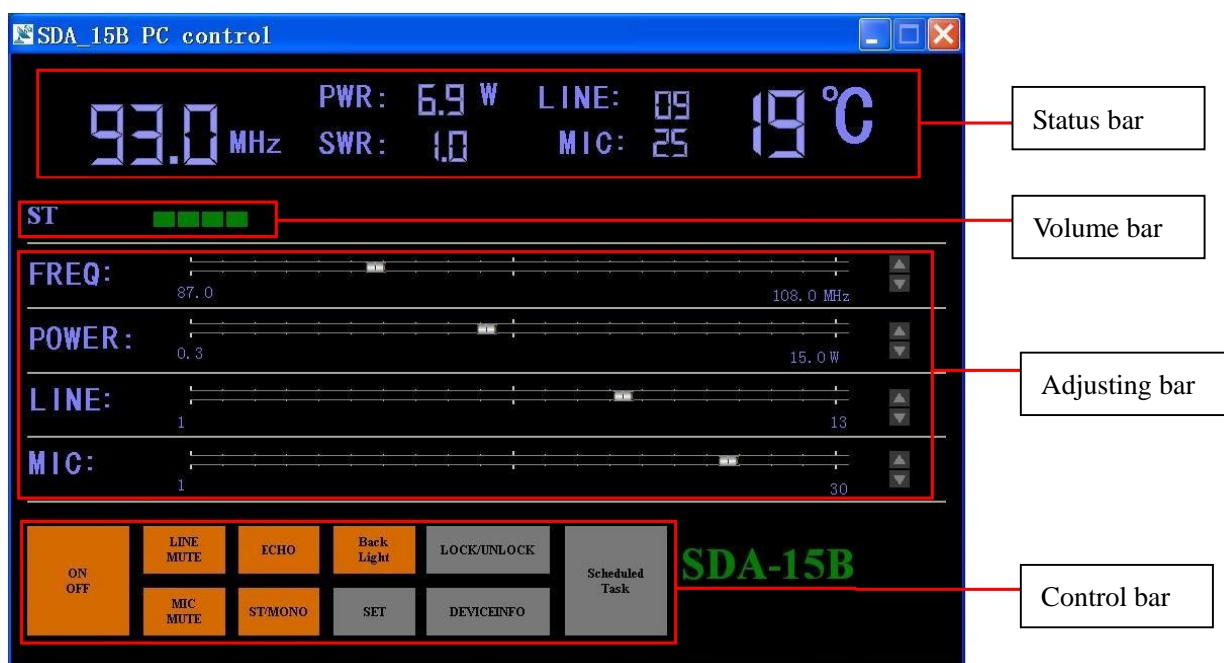
- 3) SDA-15B PC control software" folder, execute the software, the compute will pop up control interface, meanwhile the buttons on the transmitter front panel will be locked.



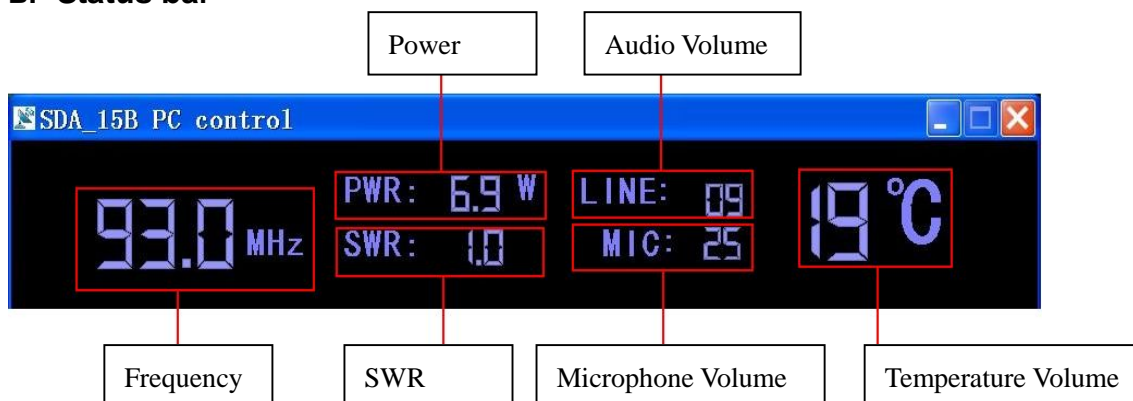
Attention: When the software interface pops up, the connection of SDA-15B and computer will be OFF, you can click the ON/OFF button in the control bar of computer.

2. Software interface

A. Software main interface

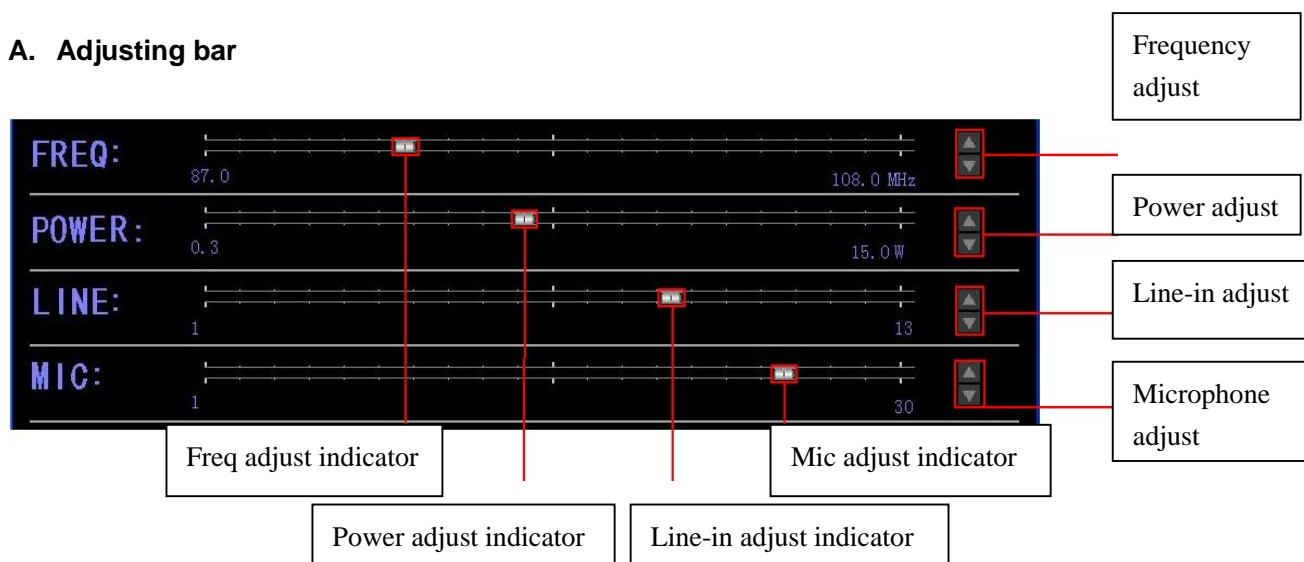


B. Status bar



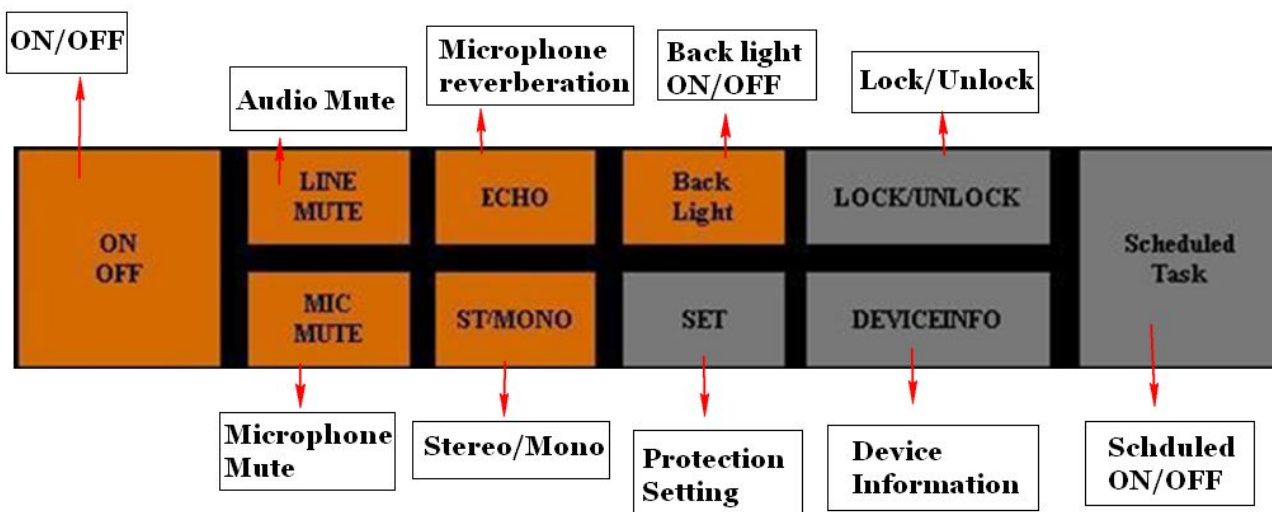
3. Software operation

A. Adjusting bar



- 1) Frequency Setting:** Drag the [FREQ] indicator to adjust the frequency within 87M~108M. You can also click [▲▼] to set to more specific frequency by 100khz stepping.
- 2) Power Setting:** Drag the [POWER] indicator to adjust the power between 0.3~15watt. You can also click [▲▼] to adjust more specifically by 0.1w stepping.
- 3) Line-in Volume Setting:** Drag the [LINE] indicator to adjust the volume between 01~13. You can also click [▲▼] to adjust the volume more specifically by 1 stepping.
- 4) Microphone Volume Setting:** Drag the [MIC] indicator and adjust the volume between 1~30. You can also click [▲▼] to adjust the volume more specifically by 1 stepping.

B. Control Bar



1). [ON/OFF]

Click [ON/OFF] once, the transmitter stops broadcasting and standby, click [ON/OFF] button again to bring the transmitter back to previous status before standby.

2). [LINE MUTE]

Click [LINE MUTE] to turn ON/OFF the line volume.

3). [MIC MUTE]

Click [MIC MUTE] to switch ON/OFF the microphone.

4). [ECHO]

Click [ECHO] to turn ON/OFF the microphone reverberation.

5). [ST/MONO]

Click [ST/MONO] to change the channel between Stereo/Mono.

6). [Back Light]

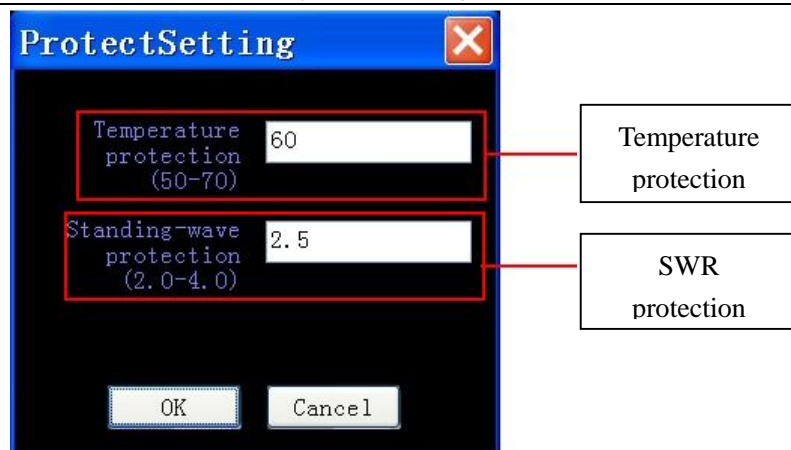
Click [Back Light] to turn ON/OFF the backlight of the transmitter.

7). [LOCK/UNLOCK]

Click [LOCK/UNLOCK] to Lock/Unlock all the other buttons(exclude [LOCK/UNLOCK] and [ON/OFF] buttons).

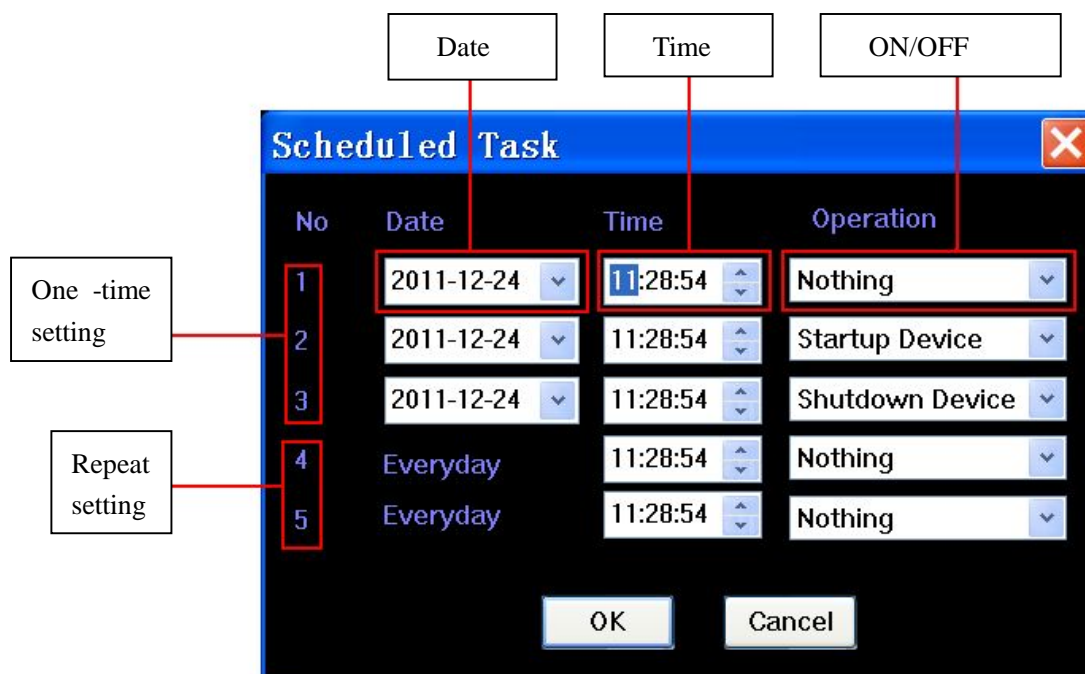
8). Protection setting [SET]

Click [SET] to enter the protection menu, then you can set the protection value for SWR and Temperature:



9). Scheduled ON/OFF [Scheduled Task]

Click [Scheduled Task] to set the scheduled time for the transmitter ON/OFF according to your need.



10). Device Information [DEVICEINFO]

Click [DEVICEINFO] to view the serial number and other ex-factory information of this transmitter, this could help recognize the genuine product.

4. Troubleshoot

No	Trouble	Reason
1	Failure in connection between transmitter and PC.	1. PC USB port is not working 2. The USB driving program hasn't been installed.
2	Connection between transmitter and PC fails from time to time	1. When connecting the transmitter with PC, please use outdoor antenna. 2. USB cable is not well connected.